



voices

THE RIGHT ANSWER WINS

Through March 10, all customers with the right answer to this month's question will be entered into a drawing for a chance to win an energy-saving kit.

Q: Where should you safely use portable standby generators?

Choose from two ways to enter: log on to pacificpower.net/rightanswer or mail to:

Right Answer
Pacific Power
825 NE Multnomah, Suite 800
Portland, OR 97232

Winners will be notified by mail. Limit one entry per household.

THE LATEST WORD



Supporting Oregon's military

Pacific Power has again donated money to Oregon on Duty – a fund to help families of Oregon National Guard men and women who are stationed overseas. The fund provides bill payment assistance for eligible Pacific Power customers having financial difficulty while their loved ones are deployed.

Pacific Power first launched Oregon on Duty in 2003. Funds are administered by the Oregon National Guard Emergency Relief Fund.

Those with questions about the program or those seeking assistance should contact their service member's Guard unit.

Spring into energy savings

Making a spring cleaning and fix-it list? Go beyond window washing and include some simple projects that will save you money on your energy bill.

- Replace burned out bulbs with energy-saving compact fluorescent light bulbs. Install them in fixtures that are turned on for long periods, such as porch lights.
- Switch your showerheads to high-performance models that use less water. You'll still enjoy the shower but you'll see a difference in your energy costs.
- Say "See ya later, refrigerator." Old refrigerators and freezers cost up to \$200 a year to operate. Unplug the energy hog in your garage or basement and recycle



it for free through Energy Trust of Oregon and get \$30 back.

- Shop for ENERGY STAR® appliances. Buy a qualified model with the blue ENERGY STAR label and get cash back from Energy Trust.

For details and more tips, call Energy Trust toll free at 1-866-368-7878 or go to www.energytrust.org/solutions.

Home grown electricity takes root

Some Pacific Power customers have installed their own small renewable generating systems, such as a wind or solar photovoltaic system, to meet all or part of their electricity needs.

These systems are monitored through our net metering program.

A net meter allows you to use electricity you generate first. Any excess goes through the meter and into our system.

Investing in a small generation system may require a large upfront expense and future maintenance commitment. Another way to support renewable energy is to enroll in our Blue Skysm program. Oregon customers have a range of options – Blue Sky Block, Usage or Habitat. Whichever option you choose, Blue Sky allows you to support renewable resources for as little as \$1.95 per month. Your participation not only benefits the environment, but also helps build



local renewable projects in the region.

Review the Blue Sky options on page 2 or at pacificpower.net/bluesky. Enroll online or call us toll free at 1-800-769-3717 for more information.

If you're considering buying a small generating system, visit our Web site at pacificpower.net/netmetering to download our net metering brochure. Or request a copy by calling us toll free at 1-888-221-7070.

BRIGHT IDEAS

Smart power strips

Many electronics continue to use electricity even when turned off in order to power internal features. Cut this energy drain by plugging your electronics into a "smart" power strip. These power strips sense when electronics such as televisions, computer monitors and printers are idle and automatically cut the power to them.

Smart power strips can be purchased online or at local electronics stores.

Visit our Web site at pacificpower.net/save for more tips on saving energy in your home.

SAFETY MATTERS

Generator safety

Portable standby generators come in handy during a power outage. But, please follow these safety tips when using them.

- Never plug a generator into an electrical outlet, as it could feed electricity back into Pacific Power lines, endangering the safety of our crews working to restore power.
- Only use generators to run individual appliances, using a UL-approved extension cord.
- Use generators only in well ventilated areas and away from windows, doors or where deadly exhaust fumes could enter the house.

Visit our Web site, pacificpower.net/safety, for more tips on using electricity safely.

Choose an **energy option** to fit

As a Pacific Power customer in Oregon you can choose from several energy options. To learn more about these options and to enroll, visit our Web site at pacificpower.net/enroll. Or call us toll free at 1-800-769-3717.



Basic service

This is our traditional option that provides electricity mainly from traditional generating resources. You automatically receive basic service unless you select another option.



Time of use

Pay for basic service plus adjustments to reflect the fluctuation in electricity prices. Participation requires a special electric meter that costs an additional \$1.50 per month.



Blue SkySM renewable energy program

By participating in the Blue Sky program, you support renewable energy development in the region. The program is Green-

Energy certified. Choose from three Blue Sky options:

BLUE SKY BLOCK – Support regional wind energy and help develop community-based, small-scale renewable energy projects that can include wind, solar, geothermal and other technologies. Buy 100 kilowatt-hour (kwh) increments called blocks for an additional \$1.95 each per month. Buy one or as many blocks as you want.

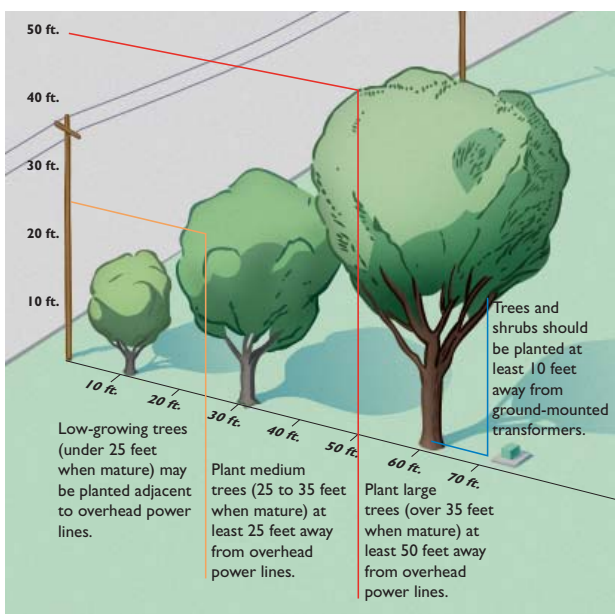
BLUE SKY USAGE – Support a blend of regional wind, biomass and solar generation equal to the amount of electricity used each month. The cost is \$0.0089 per kwh, in addition to basic service.

BLUE SKY HABITAT – Support the blend of renewable energy in the Usage option, but pay an additional \$2.50 monthly donation for restoring and preserving native salmon habitat in Oregon, administered by The Nature Conservancy.

Plant the **right tree** in the right place

Thinking of adding a little shade to your yard this spring? Please consider nearby power lines when selecting your new tree. Trees growing too close to power lines are the most common cause of power outages.

For help in choosing the right tree, download or order our free booklet, *Small Trees for Small Places*, from our Web site at pacificpower.net/trees. Or call us toll free at 1-888-221-7070.



Please remember to avoid pruning trees with power lines nearby. Call us first for help.

Customers who are facing financial difficulties, and may not be able to pay their energy bills, are encouraged to contact Pacific Power. We have a variety of options to help those struggling with their electric bills. Call us toll free at 1-888-221-7070.

To reach us, call toll free: 1-888-221-7070, 24 hours a day, 7 days a week. To report an outage, call toll free: 1-877-548-3768 (1-877-LITESOUT).

Para un representante que habla español: 1-888-225-2611. Su llamada será gratuita.

On the Web: www.pacificpower.net

