

Blue Sky customers and Pacific Power's continued contribution to renewable energy



Blue Sky continues to make a difference in program's second decade

The Blue Sky program allows Pacific Power customers to support renewable energy above what the company buys or generates on behalf of all customers.

- Blue Sky customers have supported more than 3.96 billion kilowatt-hours of renewable energy since 2000.
- At the end of 2010, more than 76,300 Blue Sky customers (Pacific Power and Rocky Mountain Power) were investing in renewable energy to the tune of more than 587 million kilowatt hours in 2010 alone. That's the equivalent of:
 - 727,607,466 miles not driven;
 - 62,082 cars off the road for one year; or
 - 8,412,467 trees planted.
- Blue Sky customers have helped advance more than 100 community-based projects across our six state service area – initiatives that grow renewable energy at the local level beyond the company's investments
- Strong customer support has enabled the Blue Sky program to be instrumental in the creation of more federally recognized Green Power Communities than any other program in the nation.

To find out more, go to pacificpower.net/bluesky or call toll free at 1-800-769-3717.

Habitat: restoring and preserving streams throughout Oregon

Thousands of Pacific Power customers participate in our Blue Sky Habitat option to restore and preserve native fish habitat and improve streams, while also supporting newly developed renewable energy generation in the region. The \$2.50 donation paid by participating customers is passed through to The Freshwater Trust and used to restore habitat in Oregon. They coordinate the use of customer funds and match with grant dollars, making even more habitat projects happen in our communities.

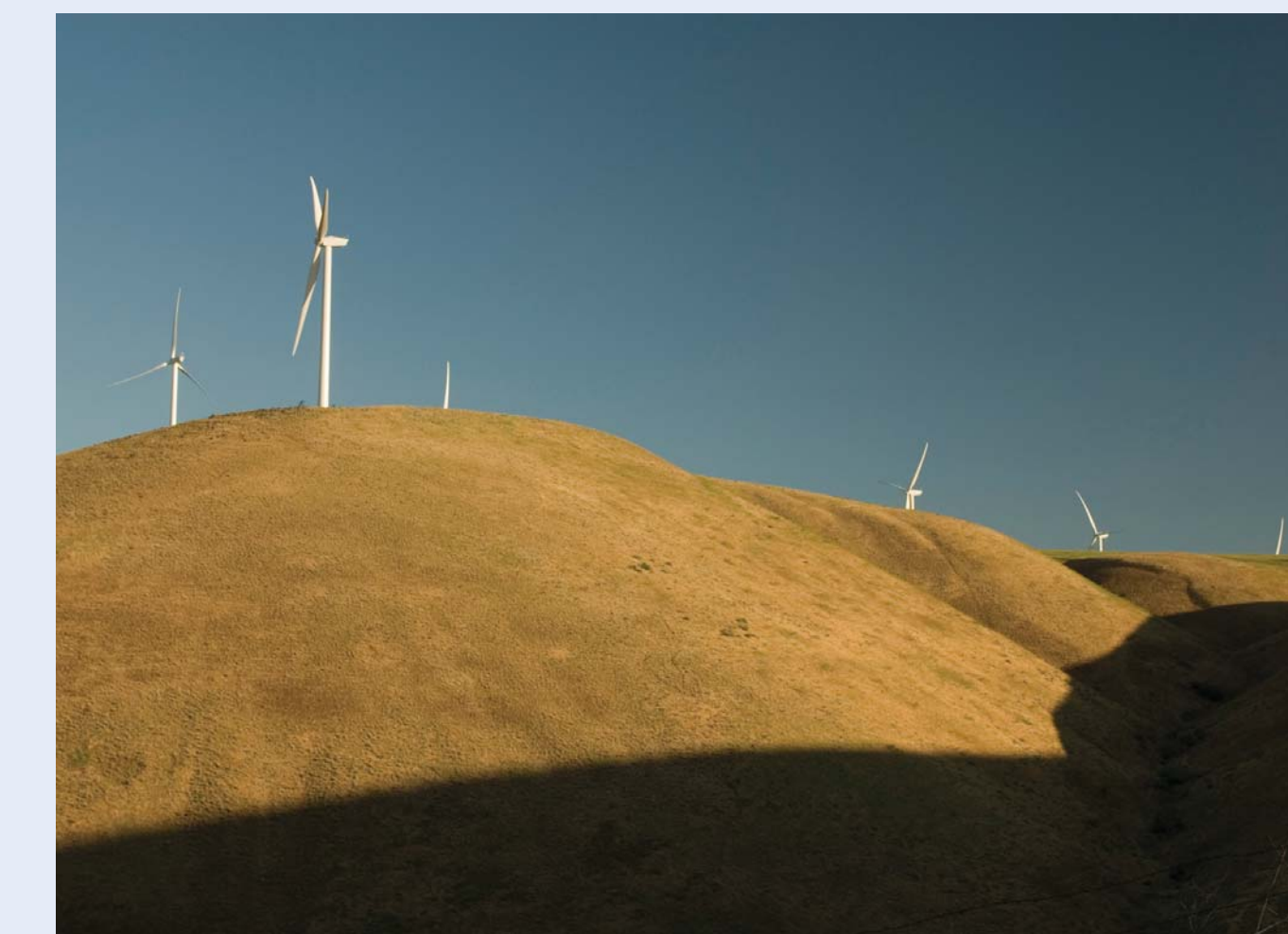
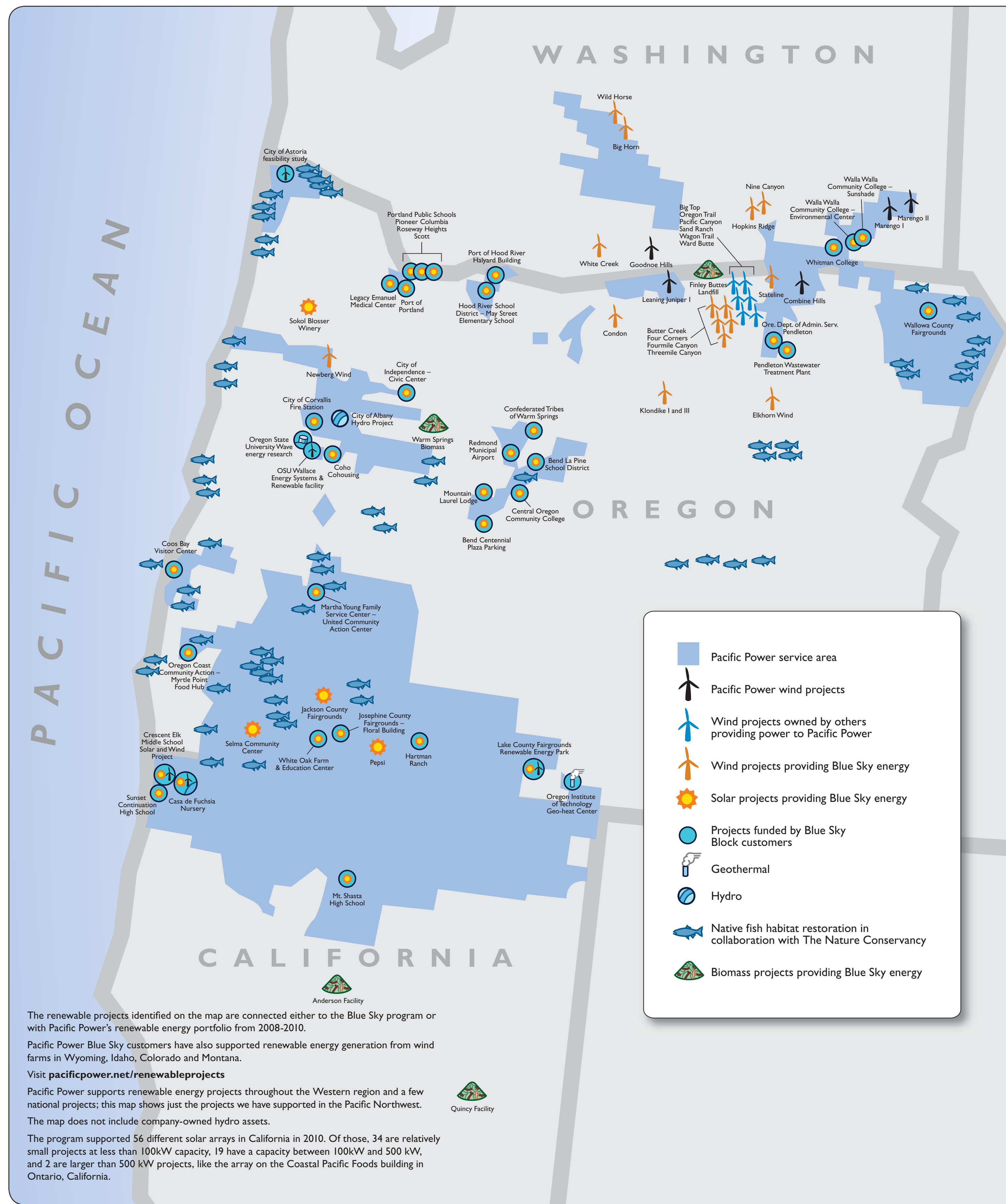


The Lewis and Clark River has runs of steelhead and Chinook and coho salmon.

Since 2002, Habitat customer donations have helped provide funding for 61 projects in more than 12 counties in Oregon, which supported habitat areas equivalent to more than 100 river miles. Learn more about current projects at pacificpower.net/blueskyhabitat.

All projects included in the map were completed in collaboration with The Nature Conservancy.

The new partnership with The Freshwater Trust began January 1, 2011. This partnership continues a popular habitat enhancement option that Oregon Pacific Power residential and small non-residential customers have had since 2002.



Pacific Power's commitment to a sustainable energy supply

Pacific Power is dedicated to providing safe and reliable electric service to our customers, and acquiring cost-effective resources to meet customers' growing electricity needs.

Our pioneering commitment to renewable energy began in the early 1980s with a demonstration wind project along the Oregon Coast and construction of the nation's first geothermal electric generating plant outside of California in 1984 – our Blundell facility near Milford, Utah.

Our acquisitions in recent years have included significant amounts of company-owned and contracted wind energy resources. PacifiCorp (Pacific Power's parent company) is the second largest owner of wind-powered generation in the entire nation, according to the American Wind Energy Association report.

- As of the end of 2010, PacifiCorp has more than 1,000 megawatts of owned wind generation capability. We also have long-term purchase agreements for more than 600 megawatts from wind projects owned by others. Since 2006, our owned and contracted wind-powered generation capability has increased by a total of more than 1,400 megawatts.
- Wind, hydro, geothermal and other non-carbon emitting resources currently make up about 21 percent of the generating capability of all PacifiCorp-owned resources, accounting for about 9.4 percent of our total energy output.
- As of the end of 2010, PacifiCorp's resource mix contains generation capability from wind-powered resources (owned and contracted) equivalent to the electricity used by more than 467,000 average residential customers annually. This represents approximately 25 percent of our customer base.
- Our planning and investment in cost-effective wind energy has provided valuable tax revenues, jobs and other benefits for our customers and the communities we serve. It also has positioned the company to meet renewable portfolio standards and/or carbon reduction initiatives enacted in four of the six states within our service area. Our wind-powered resources help address potential future federal policies as well.



Let's turn the answers on.