



VOICES

THE RIGHT ANSWER WINS

Through May 10, all customers with the right answer to this month's question will be entered into a drawing for a chance to win an ENERGY STAR® qualified cordless rechargeable vacuum.

Q: How far from a power line should you plant a tree that will grow to 35 feet or more?

Choose from one of two ways to enter: log on to pacificpower.net/rightanswer or mail to:

Pacific Power
Right Answer
825 NE Multnomah
Suite 800
Portland, OR 97232

Winners will be notified by mail. Limit one entry per household.

Make it a **wattsmart** Earth Day

Cutting your home's energy use means lower energy bills. But did you know you also help the environment when you use less energy?

Saving is simple

Saving energy is easy with our **wattsmart** energy-saving programs and incentives offered in collaboration with Energy Trust of Oregon. Many programs offer cash-back incentives on high efficiency products and home improvements designed to make your home more comfortable and energy efficient. You'll save on your initial purchase and then each month in lower electricity bills.



Small steps add up

Even making small changes in how you use energy can mean dollar savings and a lighter environmental footprint. Many cost nothing, such as turning off electronics when they're not in use. For a minimal cost, switch to compact fluorescent light bulbs and

install low-flow faucet aerators. Over time these changes will save you money.

We can help

wattsmart is about using electricity wisely, saving money and helping you reduce your carbon footprint. Visit pacificpower.net/wattsmart for programs designed to help you be **wattsmart** year round.

THE LATEST WORD

Community giving

The Pacific Power Foundation donated more than \$129,300 to nonprofit organizations in Oregon during the first quarter of 2011. In total, the foundation donated more than \$151,800 to nonprofit groups in Oregon, Washington and California.

Since 1988, it has awarded more than \$50.5 million to local nonprofit organizations.

Some groups receiving grants in the first quarter were:

- American Red Cross Southern Oregon Chapter, Medford
- Neighborhood Impact, Redmond
- Oregon Burn Center, Portland

For more information on the foundation, go to pacificpower.net/foundation.

Plant trees **with energy** in mind

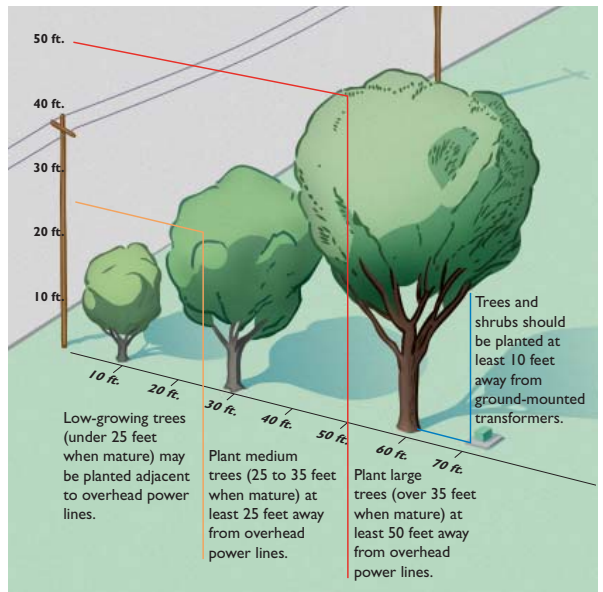
Trees planted in the right spot can help your home use less energy. According to American Forests, "Just three trees strategically planted around your home can cut your air conditioning bill in half." Trees also slow storm water runoff, beautify neighborhoods and clean our air.

Where to plant

Plant deciduous trees facing southeast and southwest for summer shade and winter sun. Plant a row of evergreen trees or shrubs to block winter winds.

Stay clear of power lines

Trees are the number one cause of power outages, so please plant them the proper distance from



power lines as shown in this illustration. And remember – stay far away from power lines when pruning or planting.

Our free booklet *Small Trees for Small Places* can help you choose the right tree. Download it at pacificpower.net/trees or call us toll free at 1-888-221-7070.

BRIGHT IDEAS

EV info online

If you own or plan to buy an electric vehicle, check out our website – pacificpower.net/ev. It has valuable information on alternative fuel vehicles, such as what to consider before buying one, recommended charging levels, tax credits available and what's required to create a home electric charging station. Also find links to other EV websites, such as a list of charging stations throughout the country and learn what we're doing to help advance the infrastructure needed to support EV technology.

Customers go green with Blue Sky

Customers enroll in our Green-e® Energy Certified Blue SkySM renewable energy program as a way to help the environment and spur development of alternative energy resources.

In 2010, more than 76,000 Blue Sky customers supported generating more than 587 million kilowatt-hours (kwh) of renewable energy in the western region – enough electricity for a year for about 49,000 homes using 1,000 kwh per month. Their support resulted in an environmental benefit equal to not driving more than 715 million miles, and helped develop 10 community-based renewable energy projects in Oregon, California and Washington.

You can participate in Blue Sky for as little as an additional \$1.95 a month on your bill. You'll be supporting the development of

Visit a wind farm

You're invited to tour a wind farm June 11. On a tour organized by the Pacific Power Blue Sky team, you'll visit the Goodnoe Hills farm near Goldendale, Washington. Advance registration is required. For details e-mail windtour@pacificpower.net. Costs are minimal and discounts are available to Blue Sky customers and children.



Goodnoe Hills 2010 wind farm tour

renewable energy in the region, separate from, and in addition to what Pacific Power buys or generates to serve all customers.

See pacificpower.net/bluesky or call us toll free at 1-800-769-3717.

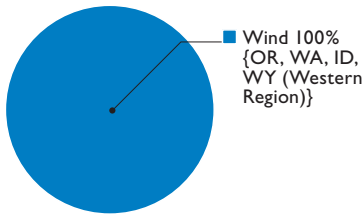
SAFETY MATTERS

Before you dig

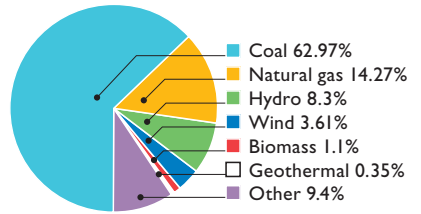
April is National Safe Digging Month – a good reminder to call 811 for a free service to locate nearby underground utilities before you plant that new tree or shrub. Making contact with an underground power line can cause serious injuries or even death. You also risk disrupting critical utility services to neighboring homes and businesses.

Call 811 at least 48 hours before digging or visit pacificpower.net/dig for the direct number of a utility locating service in your area. See pacificpower.net/safety for other electrical safety tips. Or call us toll free at 1-888-221-7070.

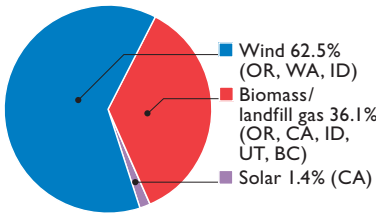
Blue Sky Block*
(sold in 100 kilowatt-hour increments)



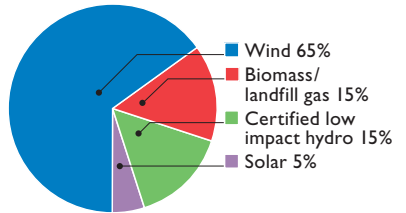
Pacific Power basic service***



Actual Blue Sky Usage/Habitat 2010*
(equal to 100% of participating customer's usage)



Blue Sky Usage/Habitat 2011**
(equal to 100% of participating customer's usage)



Blue Sky focuses on supporting western regionally supplied, newly developed renewable energy to match customer purchases. The three Blue Sky charts show the renewable resources the Blue Sky program supports and where they are generated. The Pacific Power basic mix chart shows the net system resources for basic service supplying Pacific Power customers. Facilities supported by the Blue Sky Block program will be in the Western Region. Facilities supported by the Usage and Habitat program will be primarily in the Western Region, but may include some facilities outside the Western Region of the U.S.

* These figures reflect the actual renewable energy customers supported through their participation in the Blue Sky Block, Usage, or Habitat program in 2010.

** 2011 generation mixes are prospective and may vary depending on resource availability.

*** Figures current as of 2009. May not equal 100 percent due to rounding.

Free **wattsmart** resources to help you save



Pacific Power and Energy Trust of Oregon offer these free resources to help you be **wattsmart**:

Energy Saver Kit

Get free compact fluorescent light bulbs, a high efficiency showerhead and a faucet aerator.

Energy-saving showerhead

Get a free WaterSense® showerhead.

Home Energy Review

Request a one-hour walkthrough of your home with an Energy Trust advisor.

Find more information at www.energytrust.org/free or call Energy Trust toll free at 1-866-368-7878.

Customers who are facing financial difficulties and may not be able to pay their energy bills are encouraged to call Pacific Power. We have a variety of options to help. Call us toll free at 1-888-221-7070.

To reach us, call toll free: 1-888-221-7070, 24 hours a day, 7 days a week.

To report an outage, call toll free: 1-877-508-5088.

Para un representante que habla español: 1-888-225-2611. Su llamada será gratuita.

On the Web: pacificpower.net



Let's turn the answers on.

