



# VOICES

## THE RIGHT ANSWER WINS

Through May 10, all customers with the right answer to this month's question will be entered into a drawing for a chance to win an ENERGY STAR® qualified cordless rechargeable vacuum.

**Q:** How far from a power line should you plant a tree that will grow to 35 feet or more?

Choose from one of two ways to enter: log on to [pacificpower.net/rightanswer](http://pacificpower.net/rightanswer) or mail to:

Pacific Power  
Right Answer  
825 NE Multnomah  
Suite 800  
Portland, OR 97232

Winners will be notified by mail. Limit one entry per household.

## Make it a **wattsmart** Earth Day

Cutting your home's energy use means lower energy bills. But did you know you also help the environment when you use less energy?

### Saving is simple

Saving energy is easy with our **wattsmart** energy-saving programs and incentives. These programs offer cash-back incentives on high efficiency products and home improvements designed to make your home more comfortable and energy efficient. You'll save on your initial purchase and then again month after month in lower electricity bills.



### Small steps add up

Even making small changes in how you use energy can mean dollar savings and a lighter environmental footprint. Many cost nothing, such as turning off electronics when they're not in use. For a minimal cost, switch to compact fluorescent light bulbs and install

low-flow faucet aerators. Over time these changes will save you money.

### We can help

**wattsmart** is about using electricity wisely, saving money and helping you reduce your carbon footprint. Visit [pacificpower.net/wattsmart](http://pacificpower.net/wattsmart) for programs designed to help you be **wattsmart** year round.

## THE LATEST WORD

### Community giving

The Pacific Power Foundation donated more than \$11,900 to nonprofit organizations in Washington during the first quarter of 2011. In total, the foundation donated more than \$151,800 to nonprofit groups in Washington, Oregon and California.

Since 1988, it has awarded more than \$50.5 million to local nonprofit organizations.

Some Washington groups receiving grants in the first quarter were:

- Dayton Development
- Student Health Options, Walla Walla
- Walla Walla County Health Department

For more information on the foundation, go to [pacificpower.net/foundation](http://pacificpower.net/foundation).

## Plant trees **with energy** in mind

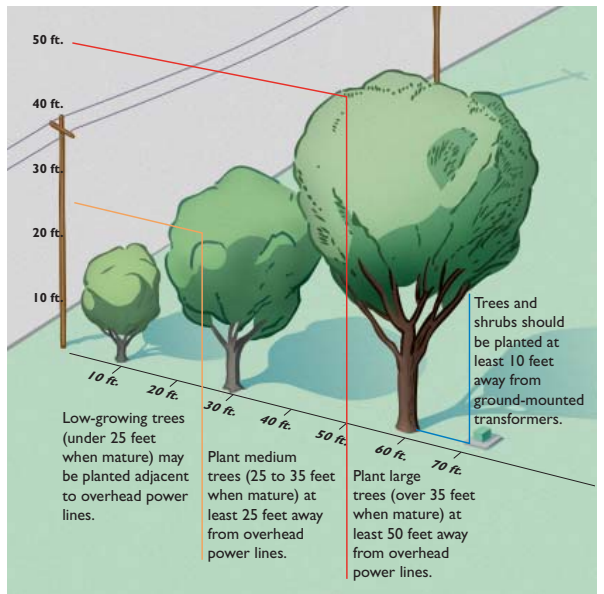
Trees planted in the right spot can help your home use less energy. According to American Forests, "Just three trees strategically planted around your home can cut your air conditioning bill in half." Trees also slow storm water runoff, beautify neighborhoods and clean our air.

### Where to plant

Plant deciduous trees facing southeast and southwest for summer shade and winter sun. Plant a row of evergreen trees or shrubs to block winter winds.

### Stay clear of power lines

Trees are the number one cause of power outages, so please plant them the proper distance from



power lines as shown in this illustration. And remember – stay far away from power lines when pruning or planting.

Our free booklet *Small Trees for Small Places* can help you choose the right tree. Download it at [pacificpower.net/trees](http://pacificpower.net/trees) or call us toll free at 1-888-221-7070.

## BRIGHT IDEAS

### EV info online

If you own or plan to buy an electric vehicle, check out our website – [pacificpower.net/ev](http://pacificpower.net/ev). It has valuable information on alternative fuel vehicles, such as what to consider before buying one, recommended charging levels, tax credits available and what's required to create a home electric charging station. Also find links to other EV websites, such as a list of charging stations throughout the country and learn what we're doing to help advance the infrastructure needed to support EV technology.

## SAFETY MATTERS

### Before you dig

April is National Safe Digging Month – a good reminder to call 811 for a free service to locate nearby underground utilities before you plant that new tree or shrub. Making contact with an underground power line can cause serious injuries or even death. You also risk disrupting critical utility services to neighboring homes and businesses.

Call 811 at least 48 hours before digging or visit [pacificpower.net/dig](http://pacificpower.net/dig) for the direct number of a utility locating service in your area. See [pacificpower.net/safety](http://pacificpower.net/safety) for other electrical safety tips. Or call us toll free at 1-888-221-7070.

Customers who are facing financial difficulties and may not be able to pay their energy bills are encouraged to call Pacific Power. We have a variety of options to help. Call us toll free at 1-888-221-7070.

# Customers go green with Blue Sky

Customers enroll in our Green-e® Energy Certified Blue Sky<sup>SM</sup> renewable energy program as a way to help the environment and spur development of alternative energy resources.

In 2010, more than 76,000 Blue Sky customers supported generating more than 587 million kilowatt-hours (kwh) of renewable energy in the western region – enough electricity for a year for about 49,000 homes using 1,000 kwh per month. Their support resulted in an environmental benefit equal to not driving more than 715 million miles, and helped develop 10 community-based renewable energy projects in Washington, California and Oregon.

You can participate in Blue Sky for only an additional \$1.95 a month on your bill. You'll be supporting the development of renewable energy in the region,

### Visit a wind farm

You're invited to tour a wind farm June 11. On a tour organized by the Pacific Power Blue Sky team, you'll visit the Goodnoe Hills farm near Goldendale, Washington. Advance registration is required. For details e-mail [wintour@pacificpower.net](mailto:wintour@pacificpower.net). Costs are minimal and discounts are available to Blue Sky customers and children.

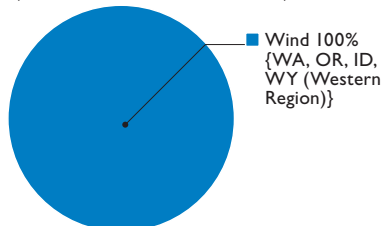


Goodnoe Hills 2010 wind farm tour

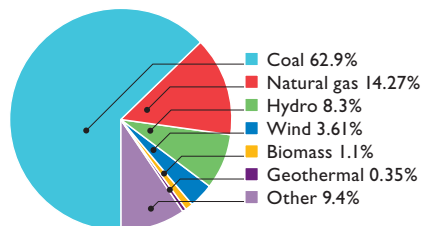
separate from, and in addition to what Pacific Power buys or generates to serve all customers.

See [pacificpower.net/bluesky](http://pacificpower.net/bluesky) or call us toll free at 1-800-769-3717.

**Blue Sky Block\***  
(sold in 100 kilowatt-hour increments)



**Pacific Power basic service\*\***



Blue Sky focuses on supporting western regionally supplied, newly developed renewable energy to match customer purchases. The first chart shows the renewable resources the Blue Sky program supports and where they are generated. The second chart shows the net system resources for basic service supplying Pacific Power customers.

\* These figures reflect the actual renewable energy customers supported through their participation in the Blue Sky Block program in 2010. Generation supported in 2011 will support Western Region resources.

\*\*Figures current as of 2009. May not equal 100 percent due to rounding.

# Save twice with efficient appliances

Today's high efficiency appliances will help you save on your electric bill year after year. And now our **wattsmart** Home Energy Savings program will help you pay for them.

We offer cash incentives on several ENERGY STAR® appliances. Get up to \$100 cash back on a qualifying clothes washer that uses up to 40 percent less electricity and 40 percent less water than a conventional washer.

You'll get more than cleaner dishes when you install a new ENERGY STAR qualified dishwasher that uses up to 31 percent less electricity. You'll also



get \$20 cash back from our Home Energy Savings program.

Before shopping this spring, see [pacificpower.net/hes](http://pacificpower.net/hes) or call toll free 1-800-942-0266.

To reach us, call toll free: 1-888-221-7070, 24 hours a day, 7 days a week.

To report an outage, call toll free: 1-877-508-5088.

Para un representante que habla español: 1-888-225-2611. Su llamada será gratuita.

On the Web: [pacificpower.net](http://pacificpower.net)



Let's turn the answers on.

