

INFORMATION SPEEDS RESPONSE



When you contact Pacific Power, please provide precise and accurate information about the emergency:

- Contact information from agency and field personnel
- Address (even if not exact location)
- Nearest cross street(s)
- Descriptive information about the location if no address is available
- Nature of emergency
- Meter number if possible

Our crews will respond quickly to assist.

REMEMBER

Your attention to electrical facilities is important. Thank you for keeping the area clear and safe until we arrive.

For more information, please visit pacificpower.net/safety.



ELECTRICAL AWARENESS FOR FIRST RESPONDERS



EMERGENCY
CONTACT NUMBERS
1-503-408-3604
OR
1-800-245-7575

When arriving at an emergency scene:

- Assume all lines are energized. Stay at least 30 feet away from overhead lines.
- Park safely away from the scene and power lines.
- Assess current and potential hazards – please take the time to look around you!
- Avoid using ladders and equipment near service drop.
- Never pull the electric meter, instead shut off power at the main panel.
- Use caution and be aware of the risk of backfeed from generators, solar panels, faulty wiring and vandalism.
- Do not attempt to use foam or water applications on pole fires.
- Do not touch electrical equipment or anything that may be touching it.
- Unless the vehicle is on fire, warn the occupants to remain inside until Pacific Power arrives.

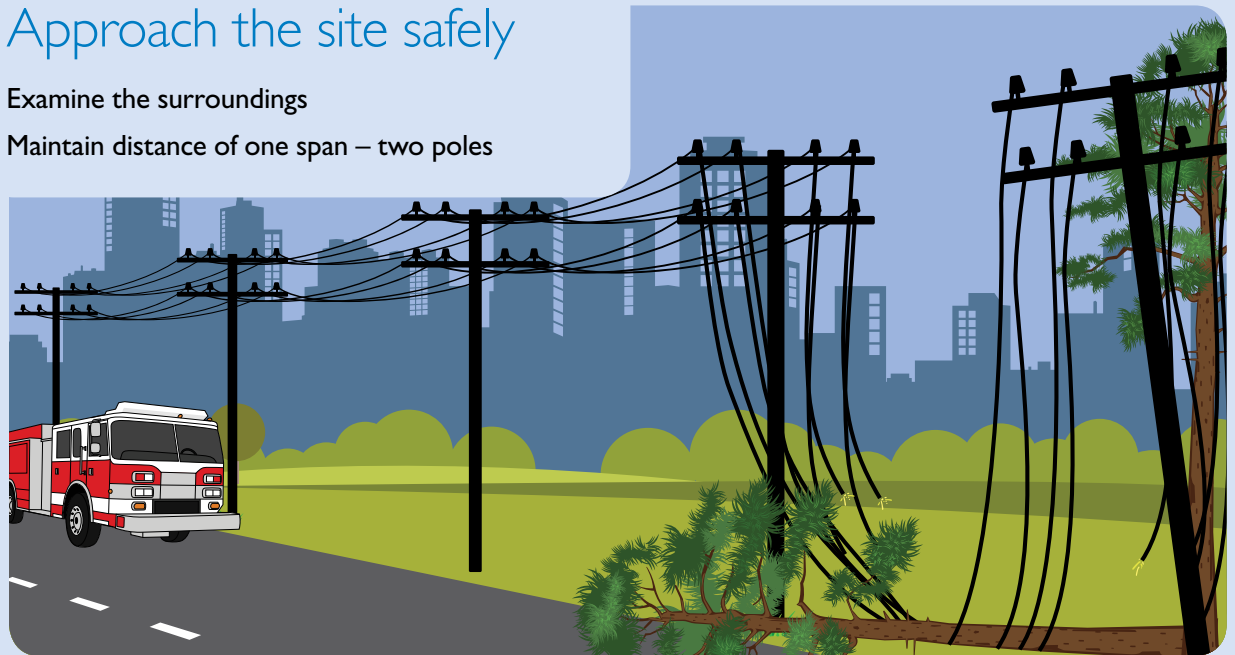
Please keep in mind:

- Only qualified utility personnel are permitted to touch, cut or move downed lines or other company electrical equipment.
- Never attempt to enter a substation or power plant until given the "okay" by utility personnel.
- Electrical current can flow through the ground when power lines are down or another energy source is present. Saturated soil increases the hazard.
- Conductive objects like fences, vehicles and metal buildings can be energized if in contact with a downed power line or other energy source, and touching an energized object can result in serious injury or death.
- Heavy smoke can conduct electricity.
- Touching or approaching vehicles in contact with power lines can be hazardous.
- Power lines can become re-energized at any time, automatically and/or by remote control.

Approach the site safely

Examine the surroundings

Maintain distance of one span – two poles



Beware of backfeed

Main power – *always* potential for re-energizing

Wait for Pacific Power to de-energize the line and instruct you that it is safe to enter the area.

