



Pacific Power Equity Advisory Group (EAG)

February Meeting Notes

February 12, 2026, 1:00 – 4:00 pm, Pacific Time

These notes were synthesized and summarized by E Source, Pacific Power’s meeting facilitation partner.

Executive Summary

There were 25 participants in attendance at the Washington Equity Advisory Group (EAG) meeting. To establish a cleaner and more equitable electricity system for Washington, PacifiCorp formed its EAG. The EAG is intended to elevate issues of energy equity in the planning process by providing a seat at the table to affected communities. Members of the EAG are community leaders supporting underserved populations, and they provide insights into the lived experiences of Washington communities.

The meeting was hosted in a virtual setting with attendees joining via the ZOOM platform. The following is a summary of the content and feedback received during the public meeting.

| 2026 EAG | Organization |
|--------------------|---|
| Erendira Cruz | Sustainable Living Center of Walla Walla |
| Candi Jaeger | OIC Yakima |
| Sylvia Schaeffer | Blue Mountain Action Council |
| Norman Thiel | SonBridge |
| Paris Valdez | Yakama Nation Fisheries |
| Presenters | |
| Cara Glennon-Olsen | Customer Benefit Indicator Advisor, Clean Energy Planning |
| Nolan Grogan | Senior Analyst, Resource Planning Valuation & Planning |
| Cassandra Hales | Coordinator, Community Affairs |
| Christina Kruger | Manager, Stakeholder Policy & Engagement |
| Robert Meredith | Director, Regulatory Affairs |
| Sarah Reed | Resource & Commercial Strategy |
| Jeffrey Daigle | Facilitator, E Source |
| Zanya Morgan | Facilitator, E Source |

| | |
|---|--|
| Morgan Westberry | Facilitator, E Source |
| Pacific Power Affiliated Attendees | |
| Kimberly Alejandro | Regulatory Manager, Clean Energy Planning |
| Randy Baker | Director, Resource Planning |
| Omar Granados | Communications Specialist |
| Corrinna Griffis | Regulatory Specialist, Resource Planning |
| Jason Hoffman | Project Manager, Regulatory Affairs |
| Zachary Hymes | Senior Customer Regulatory Specialist |
| Adam Kennedy | Senior Analyst, Integrated Resource Planning |
| Drew Marine | Specialist, Communications |
| Tag Galvin-Darnieder | E Source, Facilitation Team |
| Public Attendees | |
| Angelena Bohman | Washington Utilities and Transportation Commission |
| Paul Koenig | Washington Utilities and Transportation Commission |

Opening

Pacific Power’s Christina Kruger, Stakeholder Policy and Engagement Manager, opened the meeting by greeting all attendees and thanking members for their continued participation.

E Source facilitator, Jeffrey Daigle, reviewed the agenda and shared meeting experience items, and introduced presenters. Today’s objectives are to 1) share update on 2025 PCORC outcome and explain 2026 PCORC as aligned with CETA 2) revisit CBIs to better understand data visualization and 3) close the loop on non-price scoring process and preview recent IRP update.

Check-In

E Source’s Jeffrey Daigle “checked-in” with meeting attendees by posing the question: *What feelings or needs are you bringing to the meeting today?*

- Excitement in anticipation for the new presentation format
- Eagerness to soak up as much information as possible
- Sensitivity and guilt over recent gardening choices
- Excitement for a weekend in the mountains

Community Calendar

Zanya Morgan presented the community calendar, including the following events:

February Events –

- [February 12 – PacifiCorp Washington EAG Meeting](#)

- February 13 - Yakima Community Aid + St. Michael's Church Food Bank @ 5 S. Naches Ave | 10:00am – 12:00pm
- [February 18 - First Time Home Buyer Class – Online via Teams | 4:00 – 6:30pm](#)
- February 19 - Financial Education for Adults @ Dayton General Hospital – Booker Activities Room | 5:45 – 7:00pm
- February 20 - Yakima Community Aid + St. Michael's Church Food Bank @ 5 S. Naches Ave | 10:00am – 12:00pm
- February 27 - Yakima Community Aid + St. Michael's Church Food Bank @ 5 S. Naches Ave | 10:00am – 12:00pm
- March 17 – Walla Walla Wattsmart Business Vendor Event for contractors
- March 18 – Yakima Wattsmart Business Vendor Event for contractors

Locations for the Wattsmart Business Vendor Events will be announced at a later date. For more information, please contact WattsmartBusiness@PacifiCorp.com

Closing the Feedback Loop

Zanya Morgan gave a synopsis of some topics the group heard and saw in the January session. Themes, feedback, and impacts arising from the January meeting included:

January Themes:

- Set the stage for 2026 engagements
- Continue dialogue around the draft Equity Framework and Distributional Equity Analysis
- Hear updates around the LIBA and Low-Income Weatherization Pilot Program

January Feedback Highlights:

- Sustainable Living Center of Walla Walla suggested revisiting the Equity Framework for more value and deeper understanding
- Asian Pacific Islander Coalition noted that in person outreach from PacifiCorp should also include the contractors serving multicultural communities

Impacts:

- Continued discussions of Equity Framework to develop shared understanding
- Commitment to share more in-person opportunities, including restructuring May 1:1s

As a new tool to better understand advisor participation, Ms. Kruger reintroduced the PacifiCorp Public Participation Spectrum as adapted from the IAP2 Spectrum of Public Participation. Based on member feedback, the team developed this tool to provide more clarity about when and how EAG members can participate. Each agenda item will be anchored in an intention as indicated in the table below.

| Levels of Public Participation* | | | | |
|--|--|--|---|--|
| Inform | Consult | Involve | Collaborate | Empower |
| Our role is to keep you informed, listen carefully, and be transparent | Your role is to challenge our thinking, not to carry the | We will work with you to ensure that your concerns and | We will report back on how your input influenced the outcome. | Your insight helps refine the direction, even when |

| | | | | |
|--|---|--|--|---|
| about how your perspectives shape the work. | burden of the decision. | aspirations influence decisions. | | the decision is not final today. |
| We want to share where things stand and how your input will be used. | What considerations should we be factoring in that we might be missing? | We will look to you for advice and innovation. How does this approach land with you? | This is where the work currently sits, and here's what's still open for influence. | These elements reflect themes we heard from the advisory group. |

At the beginning of each agenda segment, presenters will place their content on the participation spectrum and share the purpose of bringing the item to the group, what advisors can expect during the presentation or what may come out of it, and how information should be viewed or contextualized.

2025 PCORC Outcome/2026 WA Allocation Protocol Adoption

Robert Meredith, Director of Regulatory Affairs, opened the segment by outlining its purpose and explaining where material falls on the Participation Spectrum.

Participation Spectrum:

- Inform

Purpose:

- Provide an overview of the 2026 Power Cost-Only Rate Case (PCORC) outcome
- Discuss the rate impact of the PCORC and changes to the allocation of costs for Washington customers
- Provide insights into the change in allocations for Washington customers

The 2026 PCORC was filed on April 1, 2025, with an initial request for \$33.9 million or a 7.9% increase. The final price change was a \$2.1 million or 0.5% increase. Along with the removal of coal from rates, changes to cost allocation include 100% allocation of Chehalis natural gas facility to Washington, fixed allocation factors, allocation of Oregon's share of Rolling Hills wind facility to Washington, removal of Hermiston natural gas facility, and lower allocation of Jim Bridger converted natural gas units 1 and 2. The benefits included resource adequacy, planning flexibility, and certainty.

Meeting Discussion

- Erendira Cruz, Sustainable Living Center of Walla Walla, asked if changing the allocations would raise the costs. Looking at the generating facilities geographically, Hermiston is closer to the Walla Walla area than Chehalis. Chehalis is also further away from Yakima.
 - Mr. Meredith noted that the geography does not change the cost allocation because the system is planned for all customers, which is different from how costs are allocated. Pacific Power plans and operates on a six-state system and does not optimize for a single state.

CBIs: Making Outcomes Visible

Cara Glennon-Olsen, Customer Benefit Indicator Advisor, opened the segment by outlining its purpose and explaining where material falls on the Participation Spectrum.

Participation Spectrum:

- Collaborate

Purpose:

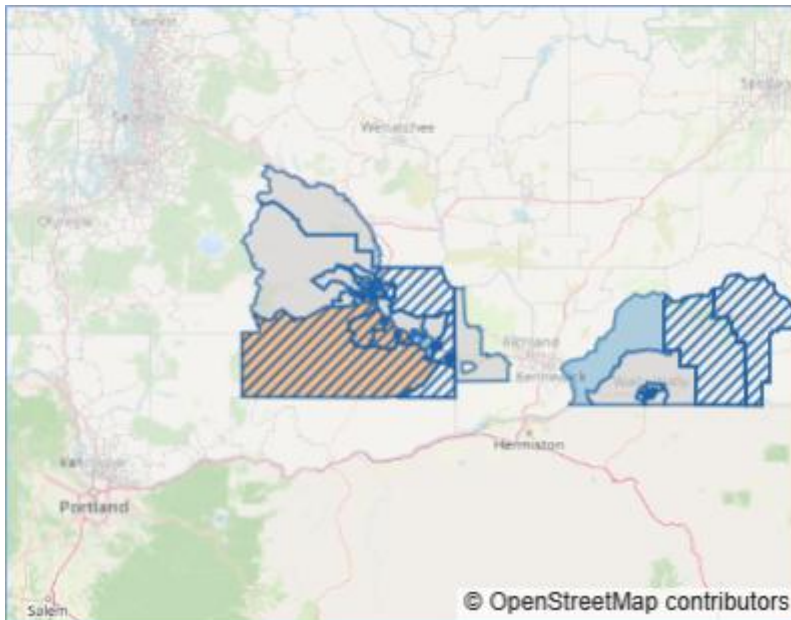
- Recap the intent behind building a dashboard in the first place
- Review different types of visuals and talk a bit about what makes them informative (or not)
- Have a discussion that will help us develop visualizations and other content in a way that is accessible and easy to understand

When the CBI dashboard was first introduced, the conversation was centered around visuals; how visuals can make complex data easier to understand, how they tell a more compelling story than numbers alone, and how co-creating visuals with communities strengthens accessibility and builds trust. The dashboard will document trends and outcomes over time, provide visibility into what has occurred and how patterns are changing, support transparency, and be easy to interpret quickly and accessible to a wide range of users. The dashboard does not define targets or imply future commitments.

The CBI dashboard will be useful for community stakeholders to see trends happening in their area, regulators to monitor outcomes, internal stakeholders to reference consistent information, or other interested parties to understand what has happened and where. The dashboard will explain outcomes; interpretations and decisions will happen elsewhere.

Visualizations allow data to be more clearly understood and simplified by using charts to show changes or stability over time, maps to show where outcomes occur such as participation in low-income bill assistance programs, and legends and annotations to explain what the data means. The core principle is that all visuals should be able to stand on their own without internal knowledge. When visuals are clear, they are self-contained and easy to understand, which allows for more meaningful participation. Even if the reader does not have a technical background, if the visuals are well designed, readers can engage meaningfully.

The images below are examples of common data visualizations:



Legend

- PacifiCorp Service Area
- Highly Impacted Community
- Yakama Nation
- Vulnerable Population

The core elements the dashboard is intended to show are observed outcomes detailing what has occurred, where and when, trends to show directional changes and stability over time, geographic distribution to show spatial patterns through maps, and contextual information which help interpret outcome variation by place and over time.

Meeting Discussion

- Mrs. Glennon-Olsen polled the group on the following questions:
 1. What level of detail is most informative to better understand outcomes?
 2. How much historical data is needed to show a meaningful trend?
 3. What narrative information is helpful when explaining data?
 4. What outcomes must be front and center?
 5. When do maps add clarity, when do they add noise?
 6. What visual elements could unintentionally imply success, failure, or ranking?

Poll results were shared anonymously during the meeting with respondents given the chance to share additional context for enhanced clarity.

In response to question 1 respondents noted:

- Comparison to previous years
- Having a high-level summary and a well cited in depth document is helpful for reviewing data
- The level of detail would depend on the context. More complicated content might need a greater level of detail – just enough to understand
- Depends on the goal, typically start with some sort of baseline and then reflect how it's changed since then
- Context is very important, whether that is a time and situational changes
- Norman Thiel, SonBridge, indicated the importance of viewing 5-year history with one year current versus just looking at 5-years ahead. The data must have a center of focus.
 - Mrs. Glennon-Olsen explained that the CEIP covers a four-year period, which sets the stage for the types of information the company wants to collect.
 - SonBridge implored the team to account for external events of influence like COVID-19 for example, which completely disrupted the forecasts.

In response to question 2 respondents noted:

- Averages
- At least 10 years is a good starting point
- 3 years
- 2-5 year (again, depending on context)
- Between 2-3 years unless longer term is really relevant to present

In response to question 3 respondents noted:

- Why each item is included is very helpful for review
- Explanations of anomalies or data that is not intuitive
- The so what of the metric, why are you bothering to track it
- Labeling and a solid legend are vital
- Erendira Cruz, Sustainable Living Center of Walla Walla, cited QuickBooks as an example of a system that explains data well and offers additional information for a deeper dive.
- Paris Valdez, Yakama Nation Fisheries, noted sample size as an important measurement and tool.

In response to question 4 respondents noted:

- A single, clear result
- The metrics that pertain specifically to the CBI and how success is measured
- Things within PacifiCorp's control related to CBIs
- Relevance, accuracy

In response to question 5 respondents noted:

- Boundaries, service areas
- Maps almost always add clarity, too many maps = too much noise
- Whenever specific eligibility is tied to a specific CBI or census tract
- Add clarity when geographic distribution matters
- There must be a geographic relevancy to the data
- Erendira Cruz, Sustainable Living Center of Walla Walla, added that there are different ways for entities to define the populations they're trying to help. There is usually an overlap of help agencies in highly impacted communities which would be interesting to see on a map.
 - Mrs. Glennon-Olsen explained that there is a state mandated definition of HICs and a method on reporting outcomes relative to vulnerable populations, however, there are subsets within the methodology that can be grouped together in different ways to present information in a way that resonates.

In response to question 6 respondents noted:

- When the key is too small it defeats the purpose
- Colors (red)
- Up and to the right is often interpreted as positive
 - Mrs. Glennon-Olsen noted that while up and to the right is often interpreted as positive, that is not always the case and is dependent on context.

Break

Integrated Resource Plan Updates

Nolan Grogan, Senior Resource Planning and Valuation Analyst, recapped the Integrated Resource Plan timeline and shared recent updates.

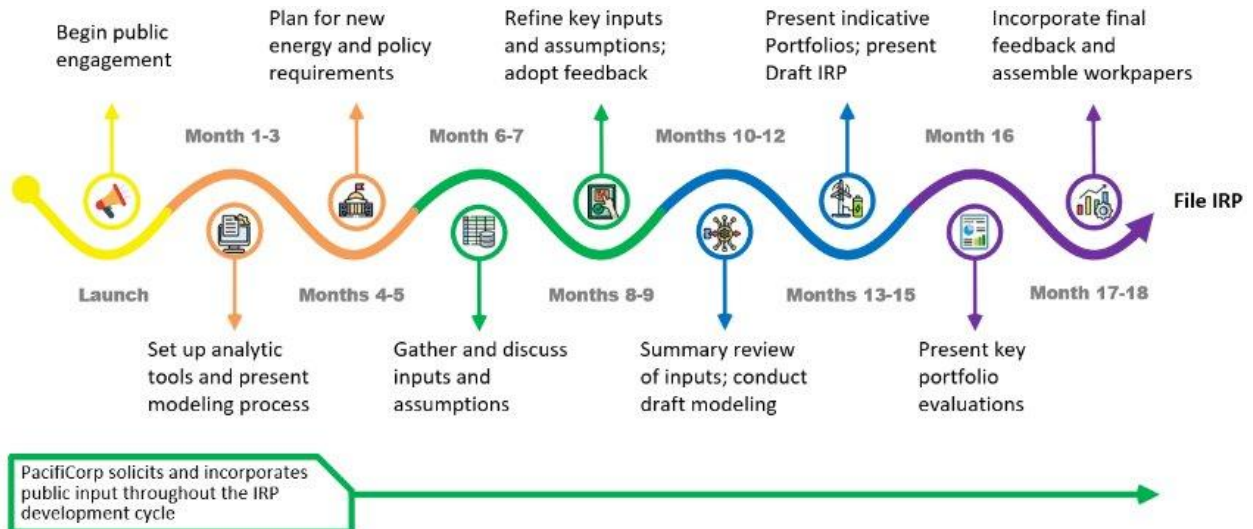
Participation Spectrum:

- Inform

Purpose:

- This section will provide an update on PacifiCorp's Integrated Resource Plan (IRP).
- In this section, we'll cover where we are in the IRP process and highlight changes from previous IRP filings that will impact our planning going forward.
- This information will provide insight into the ongoing IRP process and highlight how the IRP process is responsive to changes.

The graphics below highlight the timeline of the Integrated Resource Planning process and the Public Input Meeting schedule.



| Preliminary 2027 IRP Public Input Meeting (PIM) Schedule | | |
|--|--|--------------------------|
| | Event | Date |
| 2025 | Meeting #1 | October 1, 2025 |
| | Meeting #2 | November 12, 2025 |
| | Lockdown for 2025 IRP Update | November 30, 2025 |
| | Meeting #3 | December 17, 2025 |
| 2026 | Meeting #4 | January 28-29, 2026 |
| | Publish Draft 2025 IRP Update | January 30, 2026 |
| | Meeting #5 | March 11-12, 2026 |
| | Distribute 2025 IRP Update | March 31, 2025 |
| | Meeting #6 | April 22-23, 2026 |
| | Meeting #7 | June 3-4, 2026 |
| | Meeting #8 | July 15-16, 2026 |
| | Input Review | July 15, 2026 |
| | Meeting #9 | August 26-27, 2026 |
| | Meeting #10 | October 14-15, 2026 |
| | Indicative Portfolios^{UT 3.3, 3.4} | October 14, 2026 |
| | Meeting #11 | November 18-19, 2026 |
| | Draft 2027 IRP^{WA(3)} | November 30, 2026 |
| 2027 | Meeting #12 | January 28-29, 2027 |
| | Present final evaluations^{UT 3.5} | January 28, 2027 |
| | Meeting #13 | February 25-26, 2027 |
| | File 2027 IRP | March 31, 2027 |

To review the 2025 IRP Update Draft, please visit: https://www.pacificorp.com/content/dam/pcorp/documents/en/pacificorp/energy/integrated-resource-plan/2025-irp/2025_IRP-UPDATE-DRAFT_2026-01-30.pdf. The final 2025 IRP Update will be posted to the IRP webpage on March 31, 2026.

Since the 2025 IRP/CEIP, several updates have been made to the PLEXOS model. The input and assumption changes from the 2025 IRP/CEIP are as follows:

Inputs*

- Load Forecast
- Proxy Resource Costs
- Price Curves
- Contracts
- Transmission Options
- DSM
- Tax Credits

Assumptions*

- LT Sampled Chronology
- System RA Run
- 2026 Protocol

**Not a complete list of all input and assumption changes*

The 2025 IRP assumed the Inflation Reduction Act and Infrastructure Investment and Jobs Act (IRA/IIJA) tax credits would continue through the end of the planning horizon.

On July 4, 2025, H.R. 1, the One Big Beautiful Bill Act (OBBBA) became law and materially impacts the costs and benefits of certain renewable and storage resources.

OBBBA phases out and repeals tax credits. There is a narrow window of time in which new projects can qualify for tax credits, and new Foreign Entity of Concern (FEOC) restrictions could potentially further limit the ability for projects to qualify.

In modeling for the 2025 CEIP, no new resources were eligible to receive tax credits.

In the 2025 IRP Update/2027 IRP:

- Proxy wind and solar resources will not be eligible for tax credits.
- Proxy geothermal, hydro pumped storage, and nuclear will be eligible for tax credits if built no later than 1/1/2037.
- Proxy batteries will be eligible for the investment tax credit if built no later than 1/1/2037.

Meeting Discussion

- Mr. Daigle asked why tax credits are part of the IRP model?
 - Mr. Grogan explained that during long term resource planning new resources to serve customers are selected; these are proxy resources. For proxy resources, the model assumes proxy costs incorporating tax credits if available and applicable. In the 2025 IRP with IRA/IIJA, certain proxy resources were eligible for tax credits – making them comparatively cheaper.
 - Adam Kennedy, Senior Analyst, Integrated Resource Planning

- added that the model is selecting based on economics primarily; there are state requirements layered in as well where there may be clean energy mandates which PacifiCorp is always going to comply with. The changes in tax credits and tariffs can make a significant impact on what makes the most sense economically for the model to select.
- Erendira Cruz, Sustainable Living Center of Walla Walla, asked if the utilities are doing anything to lobby for getting credits back.
 - Randy Baker, Director of Resource Planning, noted that the IRP team does not make those kinds of decisions. The company does take positions on some political matters; however, the team is not aware of specific actions PacifiCorp is taking outside of obeying regulatory requirements.

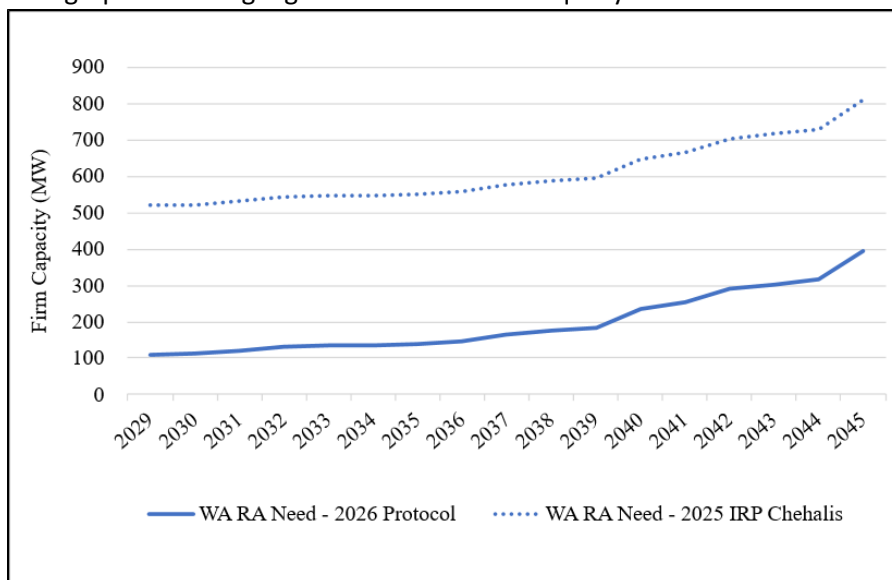
On December 22, 2025, the Washington Utilities and Transportation Commission (WUTC) issued Final Order 08 approving the Washington 2026 Protocol, to be adopted for rates effective January 1, 2026, superseding the Washington Inter-Jurisdictional Allocation Methodology (WIJAM).

The proposed Washington 2026 Protocol varies from the WIJAM in the following ways:

- All cost-allocation factors for Washington are fixed, rather than dynamic, so all resource allocations are known over time.
- Washington customers no longer receive an allocation of the Hermiston natural gas plant.
- Washington customers are allocated 100 percent of the Chehalis natural gas plant.
- Washington customers are allocated a higher share of the Rolling Hills wind facility (by adding a previously unallocated share to Washington’s current system share)
- Washington’s share of Jim Bridger 1-2 natural gas-converted units is reduced.

Overall, the 2026 Protocol lowers Washington’s resource adequacy need and slightly lowers Washington’s CETA needs.

The graph below highlights WA Resource Adequacy Need under the 2026 Protocol vs with Chehalis:



Previously, Washington was allocated less of Chehalis, which has a high firm capacity compared to renewable resources, and it contributes more to resource adequacy than a renewable resource does. The graph above highlights the significantly reduced need for firm capacity for Washington customers under the 2026 protocol with Washington and with Chehalis allocated 100% to Washington in comparison to previous allocations.

Meeting Discussion

- Erendira Cruz, Sustainable Living Center of Walla Walla, asked if the company must acquire more renewables before 2025 since Chehalis is a gas plant.
 - Mr. Grogan shared that the plan is to procure more renewable resources to meet the CETA requirement, but giving Washington a higher allocation of Chehalis does not necessarily mean that the company must procure more renewable resources. From a resource adequacy standpoint, Chehalis is a big benefit to Washington customers.
 - Mr. Kennedy added that meeting CETA target is more about renewable energy generation for Washington than it is about emitting zero carbon tomorrow. The new allocation will help balance Washington during critical moments of high peaks, but it does not mitigate the generation side of things from a renewable energy perspective.

Request for Proposals Update

Sarah Reed, Resource and Commercial Strategy, reviewed the Request for Proposals (RFP) process along with the 2025 schedule and results.

Participation Spectrum:

- Inform

Purpose:

- The purpose of this section is informational: to update the group on the 2025 Washington Situs RFP
- This section will provide an update on RFP activities and give a refresher on the overall process
- The aim is to inform for now and to lay the groundwork for input in the future

The RFP process begins with the development and filing of the Integrated Resource Plan, followed by the development and filing of the Request for Proposals, the issuance of the IRP, then proposals are received and evaluated, lastly contracts are executed and resources are developed.

- Develop/File IRP
 - Roadmap for meeting energy demand in a reliable, cost-effective and responsible way
 - Least-cost/least-risk preferred portfolio (PLEXOS)
 - Action plan created for achieving identified goals
- Develop/File RFP
 - Formal solicitation of competitive bids for energy and storage
 - Informed by IRP action plan
 - Approved by Commission
- Issue RFP

- Specific needs, bid requirements and RFP process publicly communicated and posted to PacifiCorp website
- Receive and evaluate RFP proposals
 - Proposals received; eligible proposals evaluated
 - RFP Price and non-Price Scoring calculated
 - Final shortlist determined
- Execute Contracts/Develop Resources
 - Formal contracts pursued and executed
 - Resource developed; commercial operations achieved

The 2025 RFP Schedule is as follows, with the current stage highlighted in yellow:

| Event | Date |
|---|------------------|
| RFP Issued to Market | 9/2/2025 |
| Bidder Workshop | 9/17/2025 |
| Last Day for Bidder Questions to PacifiCorp | 9/30/2025 |
| Bid Submissions Due with Pricing | 10/7/2025 |
| Bid Evaluations and Ranking Complete | 2/12/2026 |
| Contracts Finalized and Executed | 3/30/2026 |
| Guaranteed Commercial Operation Date | 12/31/2029 |

The 2025 Washington Situs RFP included a request for information for demand response to support programs such as the WattSmart program – tentatively scheduled for 2027. The RFP also included Renewable Energy Credits only bids to support our Carbon Reporting team. Origination’s focus is on resource bids to support the IRP, of which there were 44 bids in total – an encouraging turnout.

| Category | Count |
|-------------------------------|-------|
| Demand Response RFI responses | 12 |
| REC-only bids | 4 |
| Resource bids | 44 |
| ● On-system resource bids | 40 |
| ● Off-system resource bids | 4 |

Coming out of this current RFP, PacifiCorp is looking at ways to improve the non-price scoring to capture the benefits and impacts to local communities and advancing the non-price scoring element of the RFP to a more mature process by refining the questionnaire and identifying actionable steps. The goal is to ensure focus is on topics that matter most to customers.

Meeting Discussion

Ms. Reed polled the group on the following questions:

1. Which of these Non-Price Scoring Criteria do you correlate to making the most measurable impact in communities? (Rank order)
 - Number of potential local employees/jobs created
 - Amount of taxes and donations to the local community
 - Quantity of apprenticeships and training program offered within a community
2. Which of these Non-Price Scoring Criteria do you correlate to making the most measurable impact in communicating with communities? (Rank order)
 - Making project information public via the website
 - Outreach and engagement to disadvantaged and underrepresented groups
 - Outreach to non-English speaking communities
 - Outreach to those with limited internet access
 - General outreach and engagement to all communities
3. Which of these Non-Price Scoring Criteria do you correlate to making the most measurable impact in identifying where impacts are felt in communities? (Rank order)
 - Impact to environment (e.g., wetlands, historic sites, special species and habitats)
 - Proximity and benefits to Tribal groups
 - Restoration to environment (e.g., wetlands, historic sites, special species and habitats)
 - Generally, across all communities

Results:

Which of these Non-Price Scoring Criteria do you correlate to making the most measurable impact in communities? (Rank order)

- Number of potential local employees/jobs created
 - 50% voted most impactful
 - 50% voted moderately impactful
 - 0% voted least impactful
- Additional Comments:
 - Erendira Cruz, Sustainable Living Center of Walla Walla, it would be relevant to distinguish between ongoing jobs and jobs related to the building of the project
- Amount of taxes and donations to the local community
 - 50% voted most impactful
 - 50% voted moderately impactful
 - 0% voted least impactful

- Quantity of apprenticeships and training program offered within a community
 - 50% voted most impactful
 - 25% voted moderately impactful
 - 25% voted least impactful

Which of these Non-Price Scoring Criteria do you correlate to making the most measurable impact in communicating with communities? (Rank order)

- Making project information public via the website
 - 33% voted most impactful
 - 67% voted impactful
 - 0% voted somewhat impactful or least impactful
- Outreach and engagement to disadvantaged and underrepresented groups
 - 100% voted most impactful
- Outreach to non-English speaking communities
 - 67% voted most impactful
 - 33% voted impactful
 - 0% voted somewhat impactful or least impactful
- Outreach to those with limited internet access
 - 33% voted most impactful
 - 67% voted impactful
 - 0% voted somewhat impactful or least impactful
- General outreach and engagement to all communities
 - 67% voted most impactful
 - 33% voted impactful
 - 0% voted somewhat impactful or least impactful
- Additional Comments:
 - Norman Thiel, SonBridge, noted that more segmented questions equal more meaningful feedback

Which of these Non-Price Scoring Criteria do you correlate to making the most measurable impact in identifying where impacts are felt in communities? (Rank order)

- Impact to environment (e.g., wetlands, historic sites, special species and habitats)
 - 67% voted most impactful
 - 33% voted impactful
 - 0% voted somewhat or least impactful
- Proximity and benefits to Tribal groups
 - 100% voted most impactful
 - 0% voted impactful, somewhat impactful or least impactful
- Restoration to environment (e.g., wetlands, historic sites, special species and habitats)
 - 67% voted most impactful
 - 33% voted impactful
 - 0% voted somewhat or least impactful
- Generally, across all communities
 - 67% voted most impactful

- 0% voted impactful or least impactful
- 33% voted somewhat impactful

Public Comment

There was no public comment.

Next Steps

March Equity Advisory Group Meeting | March 12, 2026, 1:00 – 4:00pm PT

Online: <https://esource.zoom.us/j/89041611254?pwd=i3kaM7IXSAixmnaWRIFHvVutc4Hd4L.1>

April Equity Advisory Group Meeting | April 9, 2026, 1:00 – 4:00pm PT

Online: <https://esource.zoom.us/j/89041611254?pwd=i3kaM7IXSAixmnaWRIFHvVutc4Hd4L.1>

Meeting materials can be found online on PacifiCorp's Washington Clean Energy Transformation Act webpage. Spanish materials will also be available following each session.

For more information:

[Washington Clean Energy Implementation Plan](#)

Washington Feedback Tracker:

[Washington CEIP Feedback Tracker](#)

Washington Energy Resource Center:

[Energy Resource Center \(pacificpower.net\)](#)