



Clean Energy Transformation Act Washington Equity Advisory Group (EAG)

April 9, 2026

Clean Energy Transformation Act

1:00 – 4:00pm, April 9, 2026

Agenda

TIMING	TOPIC
1:00	Objectives & Presenters
1:10	Check In
1:20	Community Calendar & Closing the Feedback Loop
1:45	System Benefit Charge (SBC) Filing
2:05	Wildfire Preparedness & Information
2:55	Break
3:05	Member Engagement Opportunity
3:45	Public Comment
3:50	Check Out, Summary & Next Steps



For technical support, chat “Tag Galvin-Darnieder/ E Source” as recipient, and send your message



Use Gallery View (icon at top right) when in group discussion



Questions are welcome at any time
Please mute until speaking
Speak by clicking the "Raise Hand" in the tool bar

Today's Objectives

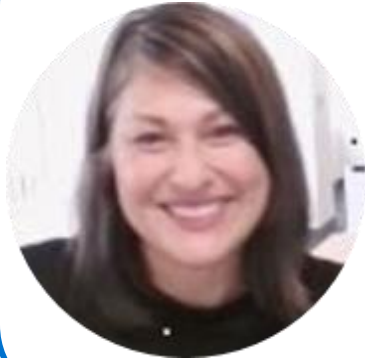
Pacific Power's Equity Advisory Group

To establish a cleaner and more equitable electricity system for Washington, PacifiCorp formed its EAG. The EAG is intended to elevate issues of energy equity in the planning process by providing a seat at the table to affected communities. Members of the EAG are community leaders supporting underserved populations, and they provide insights into the lived experiences of Washington communities.

1. Provide updates on the System Benefits Charge Filing and discuss impacts to customers
2. Share information on wildfire preparedness, as well as accessibility tools available to Partner Organizations
3. Prepare for May visits

Today's Presenters

Advisory Group Leads



Christina Kruger
Manager, Stakeholder
Policy & Engagement



Cassandra Hales
Community Affairs
Coordinator

Emergency Management



Holly Powers
Program Manager,
Emergency
Management



Lisa Corbly
Program Manager,
Access and Functional
Needs

Demand-side Management



Zachary Hymes
Senior Regulatory
Specialist

Source Facilitation Team



Jeffrey Daigle



Morgan Westberry



Zanya Morgan

Check In



Check In

What is something about your
community that most people do not
know?

Community Calendar



April 2026

SUNDAY	MONDAY	TUESDAY	WEDNESDAY	THURSDAY	FRIDAY	SATURDAY
			1	2	3	4
5	6	7	8	9 PacifiCorp EAG Meeting	10	11
			<u>SoupPort Luncheon @ St. Patricks Blanchet Hall 11:00am - 1:00pm</u>	<u>Energy Savings & Home Preservation Workshop @ BMAC 5:00 - 6:30pm</u>		<u>Plant Propagation Workshop @ Water and Environmental Center 10:00am - 12:00pm</u>
12	13	14	15	16	17	18
<u>Optimizing Brain and Body Wellness Seminar @ SonBridge 1:00 - 3:30pm</u>		<u>Getting Started with Gardening @ Water and Environmental Center 6:30 - 8:00pm</u>		<u>Resource Fair @ Yakima Salvation Army 4:00 - 6:00pm</u>		
19	20	21	22	23	24	25
26	27	28	29	30		
		<u>Sustainable Food Service Workshop @ Water and Environmental Center 6:30 - 8:00pm</u>				

Notes

May 2026

SUNDAY MONDAY TUESDAY WEDNESDAY THURSDAY FRIDAY SATURDAY

1

2

5

4

5

6

7

8

9

[Setting Up Your Home Compost @ Water and Environmental Center | 6:00 - 7:30pm](#)

10

Annual 1:1 Meetings

16

[Yakima Wildfire Open House @ State Fair Park and Event Center - State Fair Room | 5:30 - 7:30pm](#)

[Walla Walla Wildfire Open House @ Port of Walla Walla-Terminal Conference Room | 5:30 - 7:30pm](#)

17

18

19

20

21

22

23

24

25

26

27

28

29

30

31

Notes

Closing the Feedback Loop



Closing the Loop

March Objectives:

- Reinforce the purpose of the Equity Advisory Group and its role in elevating community perspectives
- Provide updates on clean energy implementation planning activities
- Close the loop on earlier feedback and highlight what actions are being taken in response
- Engage members to help shape the evolving Equity Framework and future engagement priorities

March Feedback Highlights:

- Members feel 'somewhat knowledgeable' about parts of the 2025 CEIP but need more detail to feel confident
- Plan to share more CEIP topics at future EAG meetings such as Distributional Equity Analysis, Net Metering, and available programs for participants in low income, rural areas

Impacts:

- Overview of clean energy industry in May
- Revisiting PacifiCorp's Public Participation Plan in July

Clean Energy Implementation Plan (CEIP) Update



**On March 27, 2026,
the Washington
Utilities and
Transportation
Commission
(WUTC) approved
PacifiCorp's 2025
CEIP!**

On October 1, 2025, PacifiCorp filed its second Clean Energy Implementation Plan with the Washington Utilities and Transportation Commission (WUTC). The plan includes activities the company will take during the next compliance period (years 2026 – 2029) to make progress towards defined targets.

Final [Order 01](#) in docket UE-250617 approved PacifiCorp's 2025 CEIP, subject to 18 conditions. PacifiCorp will make a supplemental filing to its 2025 CEIP by the end of June of this year.

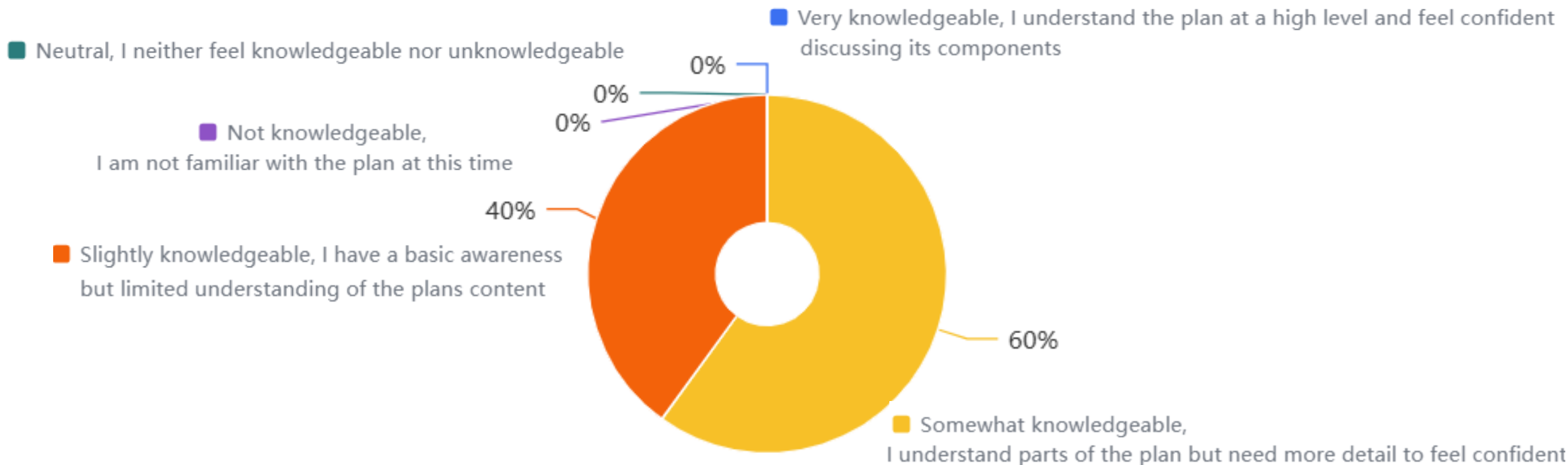
Understanding & Improving CEIP Engagement

1. How knowledgeable do you feel about PacifiCorp's 2025 Clean Energy Implementation Plan?
2. Do you feel you have been given ample opportunities to provide feedback on clean energy implementation planning topics and planning (including the public participation plan)?
3. What clean energy implementation planning topics would you like to see shared at future Equity Advisory Group meetings?
4. How can PacifiCorp make information and data more available in broadly understood terms through meaningful participant education?
5. What barriers, if any, prevent you from participating in the clean energy implementation planning process and where can PacifiCorp feasibly support you?

Poll Results

Understanding & Improving CEIP Engagement

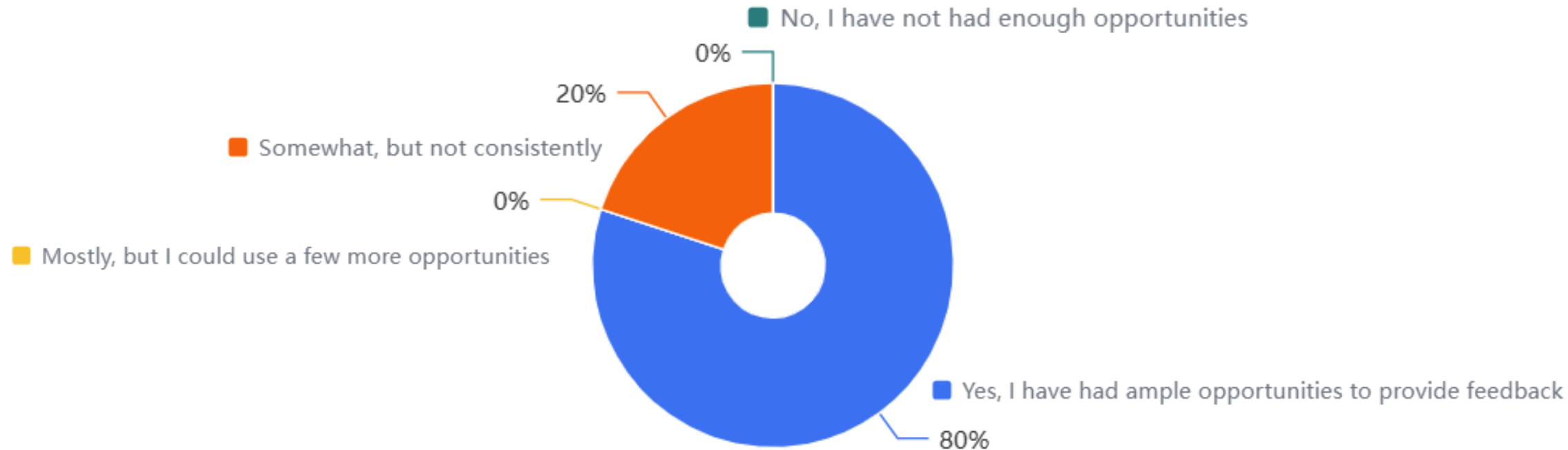
1. How knowledgeable do you feel about PacifiCorp's 2025 Clean Energy Implementation Plan?



Poll Results

Understanding & Improving CEIP Engagement

2. Do you feel you have been given ample opportunities to provide feedback on clean energy implementation planning topics and planning (including the public participation plan)?



Understanding & Improving CEIP Engagement

3. What clean energy implementation planning topics would you like to see shared at future Equity Advisory Group meetings?

- Distributional Equity Analysis
- Participation opportunities for low-income, rural communities
- ROI on solar and storage through net metering programs for community members or businesses

Understanding & Improving CEIP Engagement

4. How can PacifiCorp make information and data more available in broadly understood terms through meaningful participant education?

Sharing...

- Flyers with the community if available
- Graphical presentations with historical context and context from other states CEIP
- Access to data used or reference to data used during meetings used and how they influenced the decision-making process

Understanding & Improving CEIP Engagement

5. What barriers, if any, prevent you from participating in the clean energy implementation planning process and where can PacifiCorp feasibly support you?

- Not having a full-time employee for meeting availability after hours
- Short timeline to scheduled meetings being announced that hindered participation
- Better broadcasting of long-term meetings and subjects.

System Benefit Charge (SBC) Filing Update



Purpose of this segment:



Refresh Advisory Group on what a System Benefits Charge (SBC) is and why it's important



Create shared understanding around the SBC process and how the Advisory Group can provide feedback



Continued EAG engagement in Demand-Side Management

System Benefits Charge Primer

What is the System Benefits Charge?

- This is a per-kWh surcharge in customer bills that funds demand side management (i.e. energy efficiency and demand response) programs provided to customers.

Why is it called the System Benefits Charge?

- Demand side management programs directly benefit participating customers through incentives and lowered energy usage and bills, but they also provide an overall reduction in energy usage/demand, which is a net benefit to the total utility system/grid.

Why is the System Benefits Charge being reviewed?

- Every year PacifiCorp reviews the annual amounts forecasted to be collected by this charge as well as the forecasted expenditures of demand side management programs. This review allows PacifiCorp to ensure that these programs are not over-collecting from ratepaying customers and that they are adequately funded to achieve their system benefit targets.

System Benefits Charge Review – Current State

2025 Actuals

(SBC revenue is negative values, rate last changed 8/1/2025, account in relative balance as of 12/2025)

	Monthly Costs Energy Efficiency	Monthly Costs Demand Response	SBC Recovery	Cash Basis Accumulative Balance	Accrued Costs	Accrual Basis Accumulative Balance
January	1,648,586	27,675	(2,328,983)	(33,764)	(388,999)	872,793
February	1,550,003	82,389	(2,304,045)	(705,417)	560,365	761,505
March	1,687,247	32,611	(1,928,038)	(913,597)	43,099	596,425
April	1,069,947	46,992	(1,614,921)	(1,411,578)	(143,482)	(45,039)
May	1,725,546	28,631	(1,472,216)	(1,129,617)	(52,429)	184,493
June	2,429,078	77,391	(1,737,715)	(360,863)	(95,261)	857,986
July	1,440,983	166,993	(2,034,007)	(786,895)	(86,006)	345,949
August	2,242,733	(38,681)	(2,300,266)	(883,109)	(78,639)	171,096
September	2,085,910	73,092	(2,508,261)	(1,232,367)	130,952	(47,210)
October	1,753,415	9,481	(2,098,645)	(1,568,117)	(15,232)	(398,191)
November	2,533,940	84,117	(2,142,996)	(1,093,056)	(32,340)	44,529
December	2,756,511	68,964	(2,566,869)	(834,450)	816,375	1,119,510
2025 Totals	22,923,899	659,656	(25,036,962)		658,404	



System Benefits Charge Review – With No Changes to Revenue

2026

	Monthly Costs Energy Efficiency	Monthly Costs Demand Response	SBC Recovery	Cash Basis Accumulative Balance	Accrued Costs	Accrual Basis Accumulative Balance
January	1,573,905	(2,368)	(2,764,694)	(2,027,608)	210,361	136,713
February	1,590,492	200,159	(2,723,962)	(2,960,919)		(796,599)
March	1,881,551	200,159	(2,279,427)	(3,158,636)		(994,316)
April	1,911,633	200,159	(1,909,244)	(2,956,088)		(791,767)
May	1,819,290	200,159	(1,740,530)	(2,677,169)		(512,848)
June	2,298,920	200,159	(2,054,417)	(2,232,507)		(68,187)
July	1,921,133	200,159	(2,404,709)	(2,515,924)		(351,603)
August	2,093,350	200,159	(2,719,495)	(2,941,909)		(777,589)
September	1,937,533	200,159	(2,965,397)	(3,769,614)		(1,605,294)
October	1,902,528	200,159	(2,481,127)	(4,148,054)		(1,983,733)
November	2,667,121	200,159	(2,533,562)	(3,814,336)		(1,650,015)
December	3,852,252	200,159	(3,034,686)	(2,796,611)		(632,291)
2026 Totals	25,449,707	2,199,382	(29,611,250)		210,361	

2027

	Monthly Costs Energy Efficiency	Monthly Costs Demand Response	SBC Recovery	Cash Basis Accumulative Balance	Accrued Costs	Accrual Basis Accumulative Balance
January	1,250,208	233,981	(2,753,444)	(4,065,866)		(2,111,907)
February	1,588,559	233,981	(2,723,962)	(4,967,289)		(3,013,329)
March	1,879,264	233,981	(2,279,427)	(5,133,471)		(3,179,512)
April	1,909,309	233,981	(1,909,244)	(4,899,425)		(2,945,465)
May	1,817,079	233,981	(1,740,530)	(4,588,896)		(2,634,936)
June	2,296,125	233,981	(2,054,417)	(4,113,207)		(2,159,247)
July	1,918,798	233,981	(2,404,709)	(4,365,137)		(2,411,177)
August	2,090,805	233,981	(2,719,495)	(4,759,845)		(2,805,885)
September	1,935,177	233,981	(2,965,397)	(5,556,083)		(3,602,124)
October	1,900,216	233,981	(2,481,127)	(5,903,014)		(3,949,054)
November	2,663,879	233,981	(2,533,562)	(5,538,716)		(3,584,756)
December	3,847,569	233,981	(3,034,686)	(4,491,852)		(2,327,532)
2027 Totals	25,096,988	2,807,771	(29,600,000)		-	

2026 and 2027, Actuals +
Forecast - Revenue is in
negative values

Assumes 2026 forecasted
expenditures and 2027
planned expenditures in
DSM Business Plan

With **no change** to current
annual SBC collection
rate, account forecasted
to be over-collected
through August 2027



System Benefits Charge Review – Proposed Changes

- SBC account in relative balance as of Dec 2025
- System Benefits Charge current annual revenue is \$29.6 million
- 2026 forecasted **energy efficiency** expenditures: \$25.1 million
 - Same as in 2026 forecast slide reviewing later
 - Best available info from implementers as of early February 2026
- 2026 forecasted **demand response** expenditures: \$2.3 million
- Propose a decrease to System Benefits Charge (Schedule 191) to collect \$27 million annually so account is close to in balance in 2027
 - If approved, a Residential customer using an average of 1,200 kWh would see a bill decrease of approximately \$0.80 per month

System Benefits Charge Review – With Proposed Changes to Revenue

2026

	Monthly Costs Energy Efficiency	Monthly Costs Demand Response	SBC Recovery	Cash Basis Accumulative Balance	Accrued Costs	Accrual Basis Accumulative Balance
January	1,573,905	(2,368)	(2,764,694)	(2,027,608)	210,361	136,713
February	1,590,492	200,159	(2,723,962)	(2,960,919)		(796,599)
March	1,881,551	200,159	(2,279,427)	(3,158,636)		(994,316)
April	1,911,633	200,159	(1,909,244)	(2,956,088)		(791,767)
May	1,819,290	200,159	(1,740,530)	(2,677,169)		(512,848)
June	2,298,920	200,159	(2,054,417)	(2,232,507)		(68,187)
July	1,921,133	200,159	(2,404,709)	(2,515,924)		(351,603)
August	2,093,350	200,159	(2,480,620)	(2,703,035)		(538,714)
September	1,937,533	200,159	(2,704,923)	(3,270,266)		(1,105,945)
October	1,902,528	200,159	(2,263,190)	(3,430,768)		(1,266,448)
November	2,667,121	200,159	(2,311,019)	(2,874,508)		(710,187)
December	3,852,252	200,159	(2,768,126)	(1,590,223)		574,098
2026 Totals	25,449,707	2,199,382	(28,404,862)		210,361	

2027

	Monthly Costs Energy Efficiency	Monthly Costs Demand Response	SBC Recovery	Cash Basis Accumulative Balance	Accrued Costs	Accrual Basis Accumulative Balance
January	1,250,208	233,981	(2,511,588)	(2,617,621)		(663,662)
February	1,588,559	233,981	(2,484,695)	(3,279,777)		(1,325,818)
March	1,879,264	233,981	(2,079,207)	(3,245,740)		(1,291,780)
April	1,909,309	233,981	(1,741,540)	(2,843,989)		(890,030)
May	1,817,079	233,981	(1,587,646)	(2,380,576)		(426,616)
June	2,296,125	233,981	(1,873,962)	(1,724,431)		229,528
July	1,918,798	233,981	(2,193,484)	(1,765,137)		188,823
August	2,090,805	233,981	(2,480,620)	(1,920,971)		32,989
September	1,935,177	233,981	(2,704,923)	(2,456,735)		(502,775)
October	1,900,216	233,981	(2,263,190)	(2,585,728)		(631,769)
November	2,663,879	233,981	(2,311,019)	(1,998,888)		(44,928)
December	3,847,569	233,981	(2,768,126)	(685,464)		1,478,857
2027 Totals	25,096,988	2,807,771	(27,000,000)		-	

Next
Adjustment
Opportunity

2026 and 2027, Actuals +
Forecast - Revenue is in
negative values

Assumes 2026 forecasted
expenditures and 2027
planned expenditures in DSM
Business Plan

With **change** to current
annual SBC collection rate,
account forecasted to be in
balance on an accrual basis
for most of 2027

System Benefits Charge Review – Discussion & Next Steps

Seeking input today on

- **Proposed decrease from \$29.6 to \$27 million annually**

Next Steps

- Draft filing to advisory groups by 5/1/2026
- Comments requested by Friday, 5/15/2026
- File by 6/1/2026
- **Effective date for rate change if approved - 8/1/2026**
- Re-analyze no later than March 2027

**ENGAGEMENT
OPPORTUNITY**



Stay tuned for an
opportunity to share
feedback via an in Zoom
poll, survey, or activity.

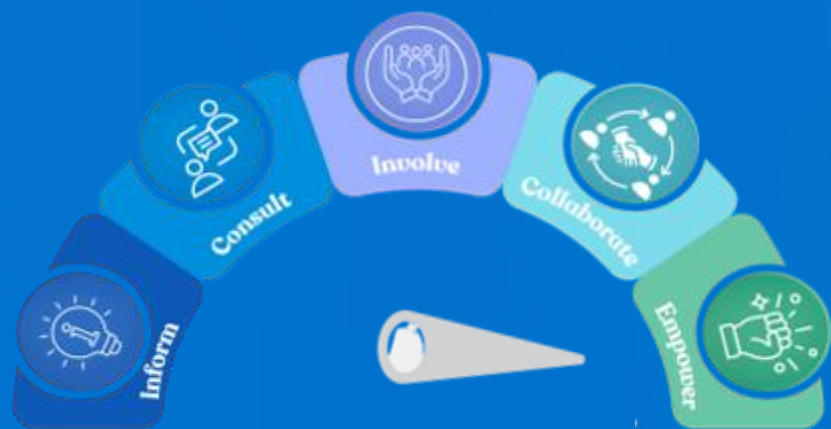


Break



Wildfire Information & Preparedness:

Emergency Management & Access and Functional Needs



Purpose of this segment:



Equip Advisory Group Members with wildfire preparedness information and resources



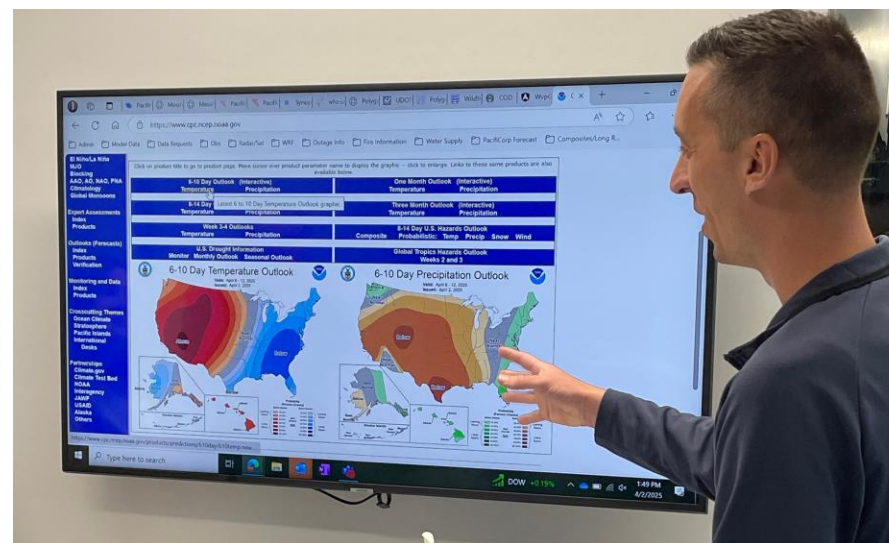
Share company preparedness and coordination actions and what customers and Advisory Group members can do to be resilient during wildfire season



Connect different pieces of Emergency Management and how they work together

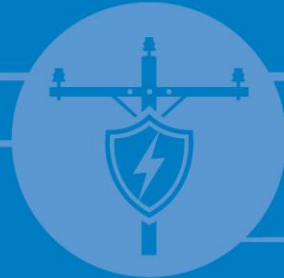
Agenda

- Washington Service Area & Wildfire Mitigation
- Power Interruptions & Operational Practices
- Preparedness & Resources

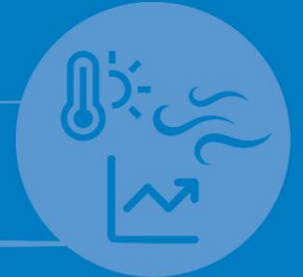


Washington Service Area & Wildfire Mitigation

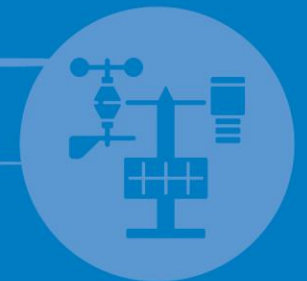
SYSTEM STRENGTHENING



WEATHER MONITORING



VEGETATION
MANAGEMENT



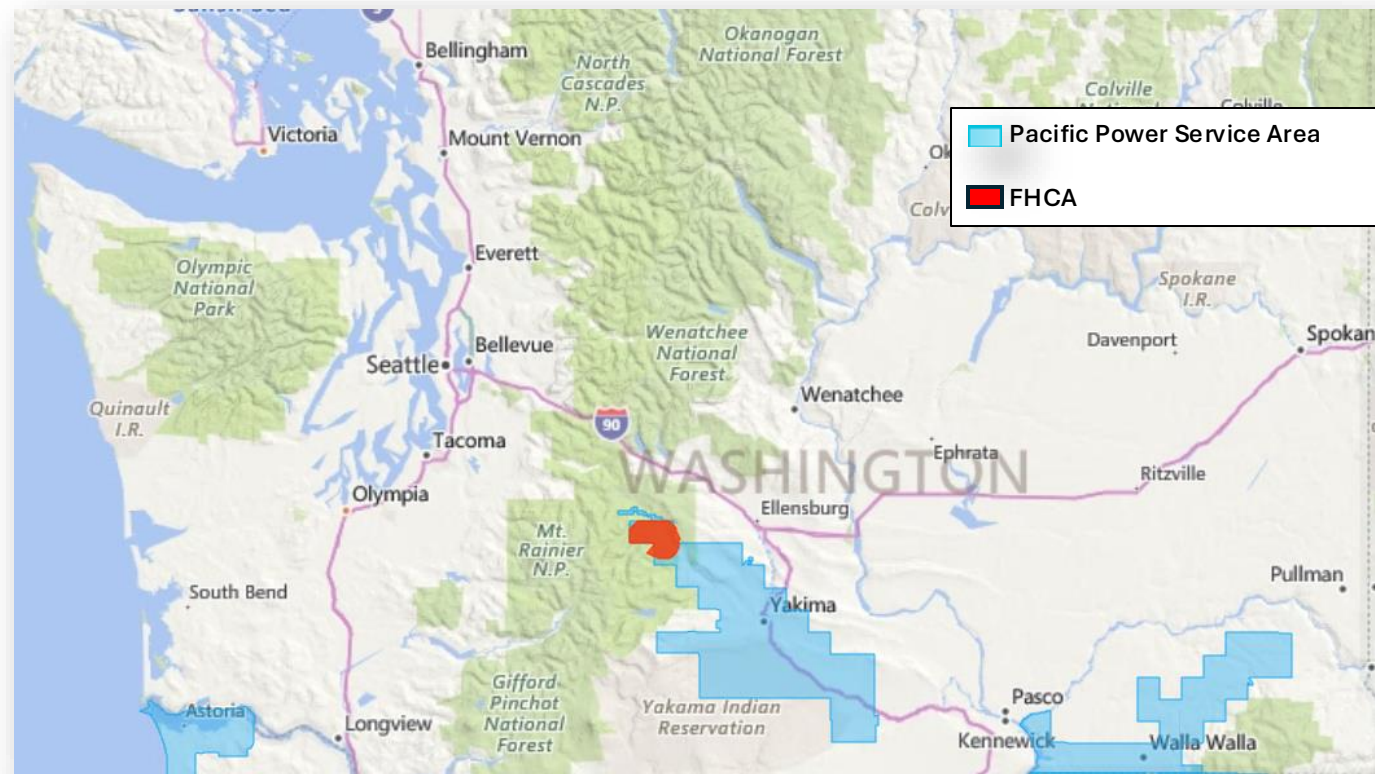
TECHNOLOGY

Washington Service Area

- 138,000 customers
- 2,700 square miles
- 56 substations

Areas of Heightened Fire Consequence

Line Miles	Washington	FHCA
Overhead Transmission	673	0
Overhead Distribution	3,400	23
Total Miles	4,073	23



- Areas of heightened wildfire risk
- 20 overhead line miles
- **3%** of Pacific Power's Washington service territory

2025 Accomplishments

Situational Awareness

- Installed 33 weather stations
- Launched Wildfire Intelligence Center

Engagement

- Participated in 22 community, AFN and public safety partner meetings and events
- Fire Emergency Response Managers (FERMs)
- Outreach materials translated to Spanish & ASL interpreter at one wildfire forum

System Resiliency and Strengthening

- 214 distribution poles cleared of vegetation in FHCA
- Inspected over 134,000 transmission and distribution facilities (110,000 visual, 16,000 detailed, and 7,000 drone/helicopter)
- Upgraded or replaced 11 relays and reclosers
- Installed 45 communication fault current indicators

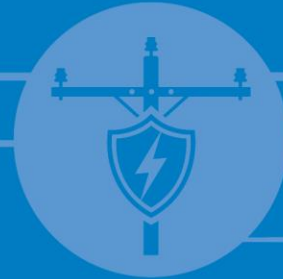
Washington Wildfire Events



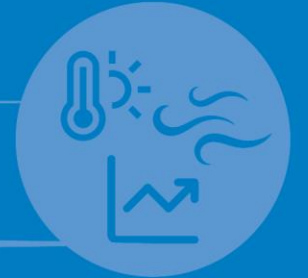
Date	Location	Event Type	Time	Registration
Tuesday, March 17	Washington Webinar	Webinar	1:00p-2:00p	Video Recording
Monday, May 11	Yakima, WA	Open House	5:30p-7:30p	None Required
Thursday, May 14	Walla Walla, WA	Forum-lite	5:30p-7:30p	Register at PacificPower.net/Events

Operational Practices & Types of Power Interruptions

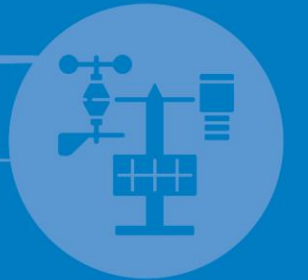
SYSTEM STRENGTHENING



WEATHER MONITORING



VEGETATION MANAGEMENT



TECHNOLOGY

Emergency Management Team

- Develop an overall strategy for coordination with state, federal and local emergency management teams
- Lead response and coordination during wildfires
- Maintains agency relationships
- Community outreach and monitoring

Meteorology Team

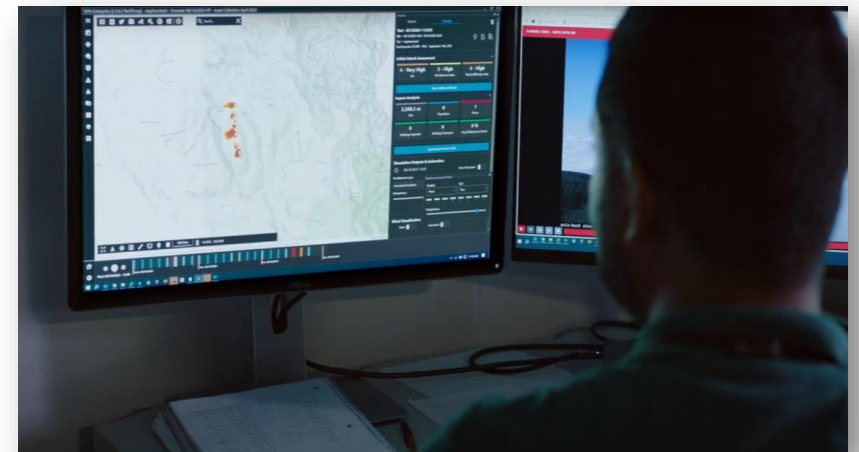
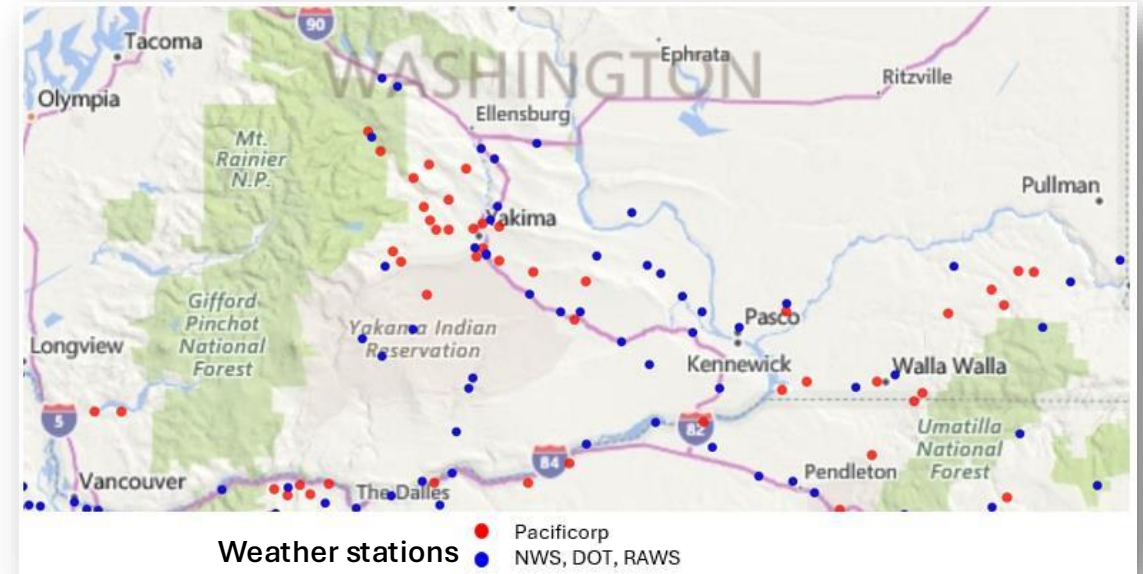
- Daily forecasting & risk modeling
- 24/7 monitoring from 541+ weather stations

Fire & Emergency Response Group *NEW*

- Monitors and responds to wildfires across service area
- Support public safety partners
- Provides training and incident information

Wildfire Intelligence Center *NEW*

- Provides 24/7 monitoring and operational support
- Analyzes threats using a complexity-based decision matrix



Ongoing coordination

- Emergency managers assigned to regions
- Meetings with county and city emergency managers
- Community safety forums



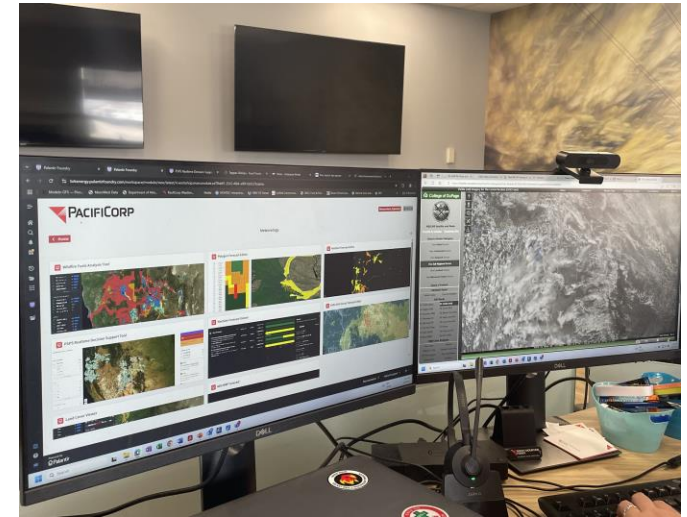
Trainings and exercises

- Attend public safety partner trainings and exercises when requested
- Hold internal trainings and exercises



Situational awareness

- Public Safety Partner Portal
- Wildfire Intelligence Center
- Fire and emergency response managers



Communications and outreach

Tribal Nations

- Shared wildfire safety information with Tribal Nation's media and publications
- Tribal Liaison to lead consultation and outreach efforts with the Tribes



#WildfireSafety #NorthernCalifornia
#CommunityPreparedness #PacificPower



Pacific Power California Wildfire Webinar

Tuesday, March 4, 1-2 p.m. PDT

Non-Residential Customers

- Regional Business Managers shared wildfire information with their large customers
- Discussions at local service organization meetings
- Access and Functional Needs (AFN) Program Manager coordinates across programs and outreach efforts

Access and Function Needs Customers

- Pacific Power utilizes a program manager to increase visibility into programs for Access and Functional Needs groups and to reduce program barriers for eligible customers.



Safety *or* Reliability

- We know that the system **cannot always operate both safely *and* reliably** in the extreme weather environment in which we are operating today
- When safety and reliability are in conflict, **we prioritize safety**
- While we **understand the hardships** caused by power outages, the physical safety of customers and their properties takes precedence over the reliability of electric service

Getting back to Safe *and* Reliable

- The goal is a more robust and resilient system that helps improve power delivery within while preventing wildfire in this increasingly extreme weather environment
- We are making improvements to our system and processes as fast we can, but **these changes will take time**

Situations that could cause outages



Storms & Accidents

- Event-driven
- Limited/no advance notification to customers
- Coordination with local EM when possible



Planned Maintenance

- Proactive
- Advanced customer notifications
- Coordination with local EM when necessary



Enhanced Safety Settings

- Event-driven
- Customer notifications when settings are on for the season & standard outage notifications
- Coordination with local EM prior to season



Emergency De-energization

- Event-driven & sometimes proactive
- Advanced customer notifications when possible
- Coordination with local EM throughout incident



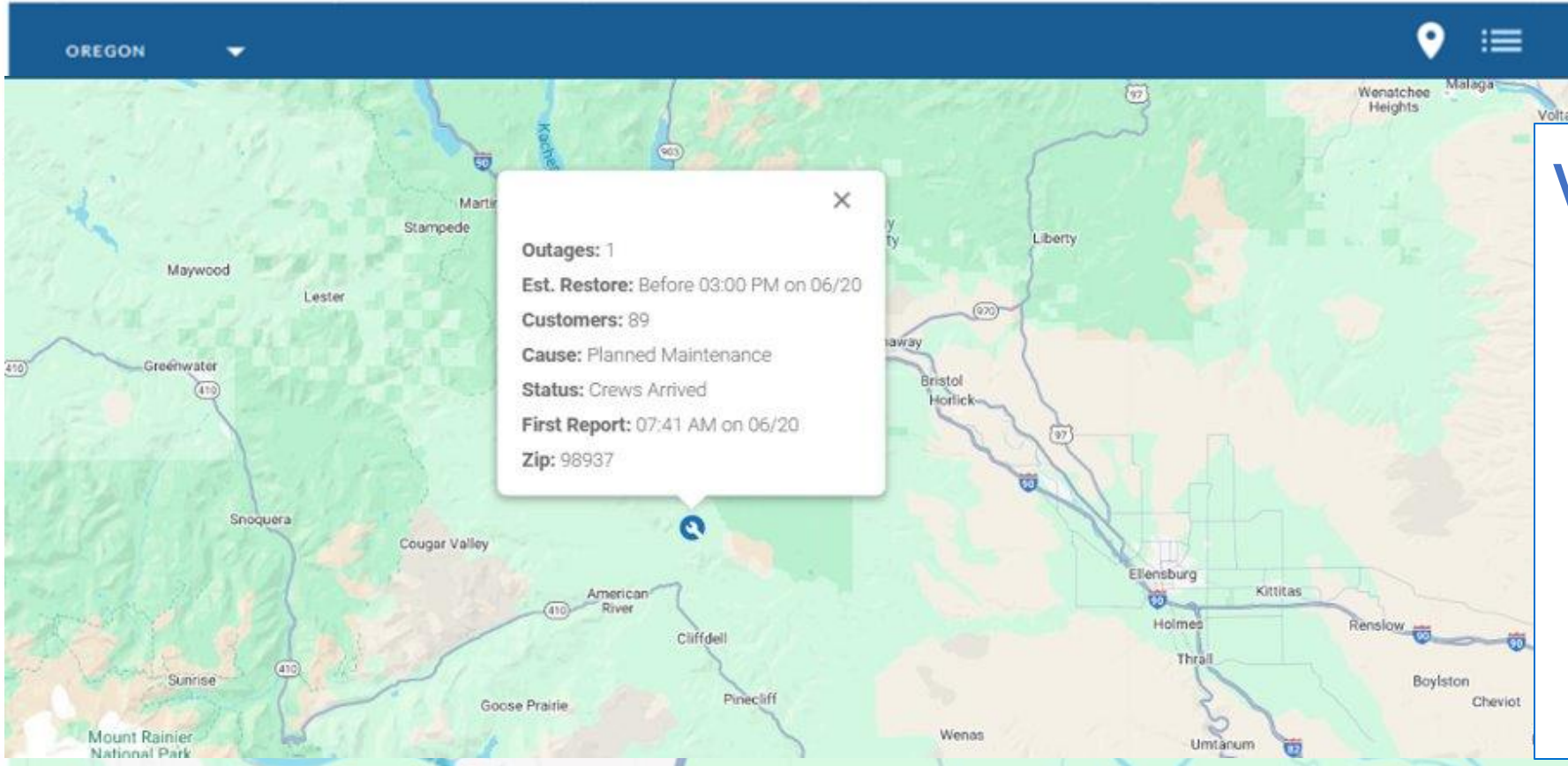
Public Safety Power Shutoff

- Event-driven & proactive
- Advanced customer notifications, set cadence
- Coordination with local EM throughout incident



Planned Maintenance

There are 12 outages in Oregon affecting 221 customers



**Verify contact info &
sign up for alerts**

PacificPower.net/Account

PacificPower.net/Alerts

1-888-221-7070

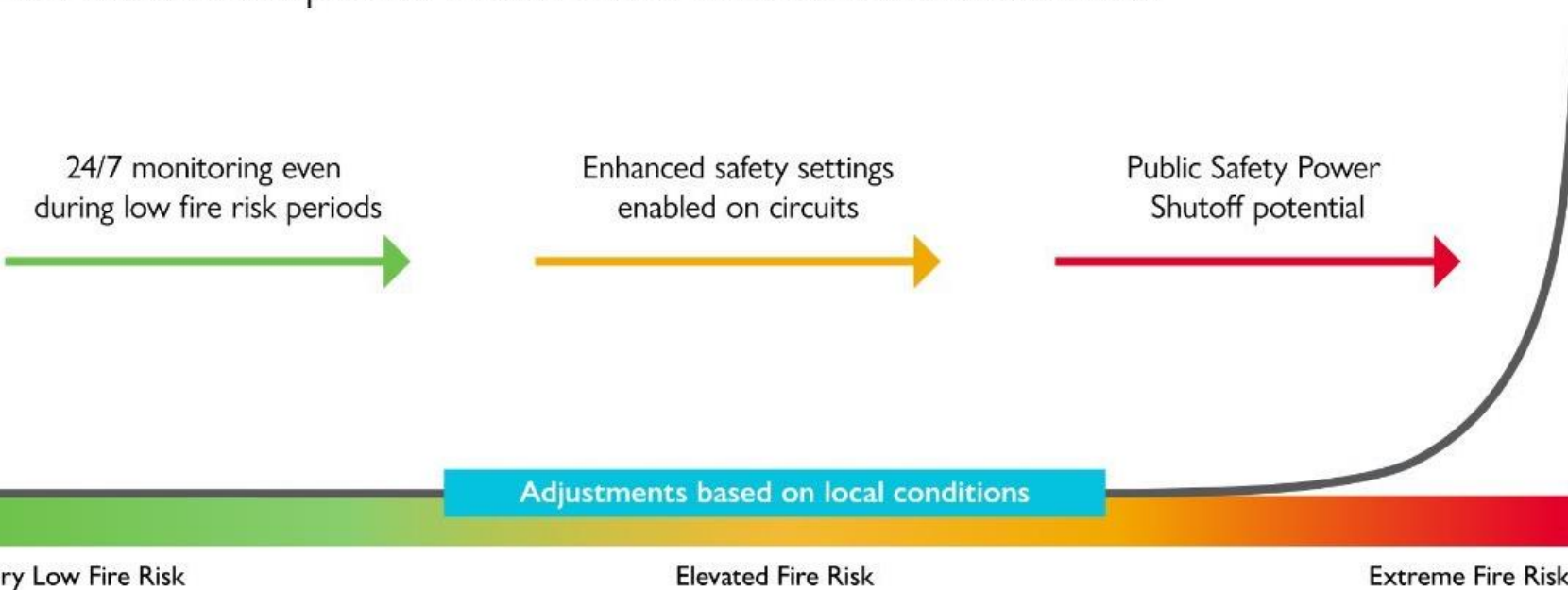
<https://www.pacificpower.net/outages-safety>



Enhanced Safety Settings

Fire season is a condition...not a date

Our actions increase as risk increases to prevent wildfires from starting and reduce the impacts of wildfire on our customers and communities.



- ESS settings are **enabled in advance of weather conditions** that have historically been related to catastrophic fires
- Data supporting ESS: Other utilities in California have experienced a **68% reduction in ignitions** from fast trip settings
- During the 2025 fire season **59% of all overhead circuits** were placed in ESS (438 circuits)



Enhanced Safety Settings

Customer Notifications

When settings are turned on for the season:

- Email or physical mail

When an outage occurs

- Standard outage notifications based on customer communications preferences

2025: **390** Enhanced Safety Settings related outages in Washington



Emergency De-energization

We monitor wildfires 24/7 and take focused action when required, including shutting off power in targeted areas.

- If a fire gets too close to our equipment or power lines, we will turn off the power.
- This helps prevent additional fires starting, protects first responders and keeps our customers and communities safe.
- Once the fire risk has passed, we will inspect equipment for damage, make repairs and turn the power back on when it is safe to do so.





Emergency De-energization

Customer Notifications

When pending or possible

- May be able to provide advanced notification

When imminent or already occurred

- Unable to provide advanced notification

2025: 2 Emergency
De-energizations in
Washington

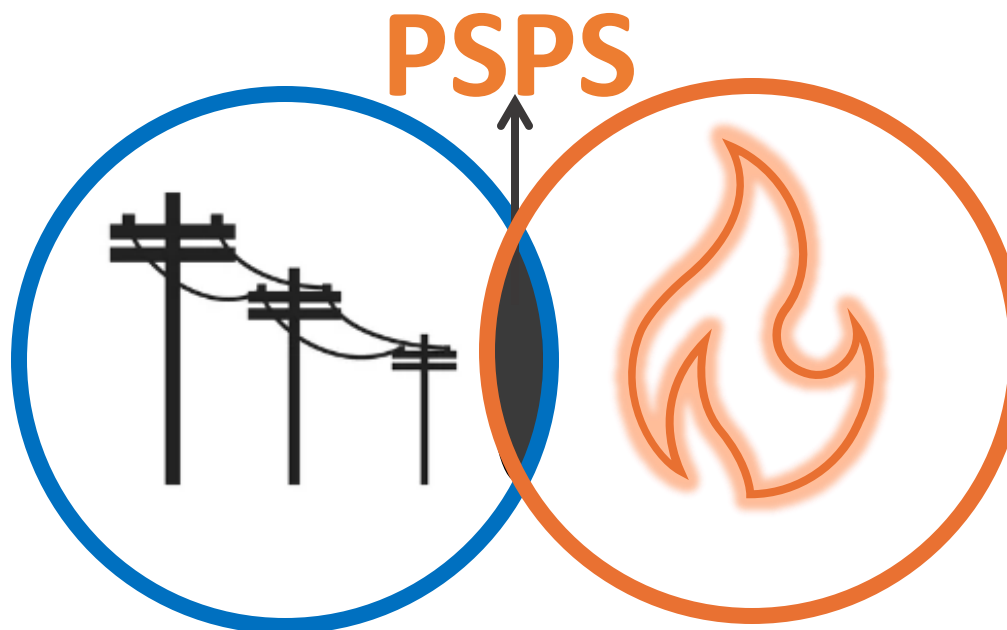




Public Safety Power Shutoff (PSPS)

A Public Safety Power Shutoff is a last resort mitigation practice that reduces or removes the potential of power infrastructure causing a fire during extreme environmental and weather conditions and is considered when:

Outage risk is the likelihood that wind will cause outages (vegetation contact, flying debris, damage, etc.).



Wildfire risk is the likelihood that an ignition will grow to become a large or rapidly growing wildfire due to dry vegetation and weather conditions.



Public Safety Power Shutoff (PSPS)

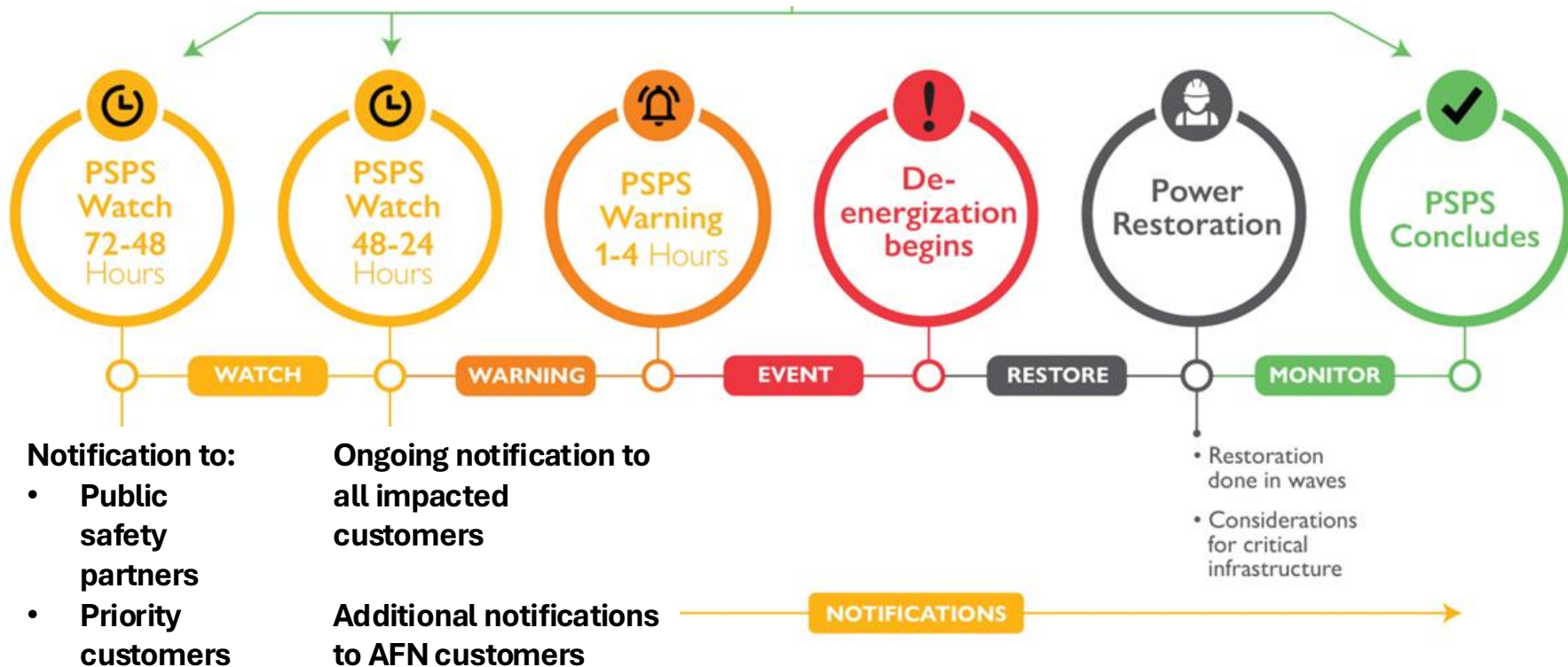
Customer Notifications

When possible or pending

- Public safety partners
- Priority customers

When likely to occur and throughout event

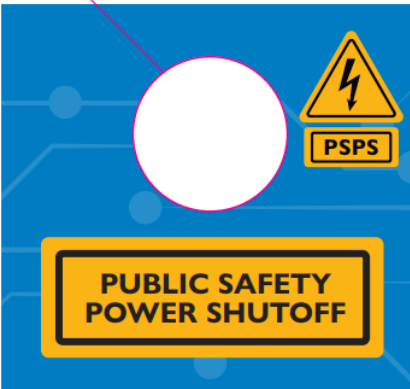
- Ongoing notification to all impacted customers
- Additional notifications to AFN customers



2025: 0 Public Safety Power Shutoffs in Washington



Public Safety Power Shutoff (PSPS)



**PUBLIC SAFETY
POWER SHUTOFF**

Due to extreme wildfire risk and hazardous weather in your area, we may turn off your power on

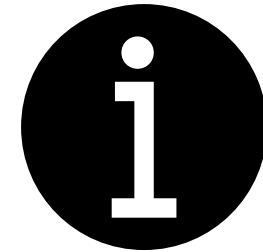
Power may be out until weather conditions have passed and could last multiple days. According to your account, someone in your household uses medical equipment that requires electricity. **We were unable to reach you by phone, so we stopped by to check on you.**

**Please call us at
1-888-221-7070**
to confirm you received this message

For More Information Visit:
PacificPower.net/PSPS
PacificPower.net/Outages
PacificPower.net/Prepare

PACIFIC POWER.

Additional notifications for AFN customers



Medical Certificate

- Who: For customers who depend on electricity for [medical equipment](#)
- How: Medical professional completes form

Access and Functional Needs Self-Certification

- Who: For customers with a [disability or use a device for health, safety or independence that requires electricity](#), and do not have medical certificate
- How: Customer completes online form



Public Safety Power Shutoff (PSPS)

Community Resource Centers

May be established to serve communities affected by PSPS

Available Services

- ✓ Accessible shelter from environment
- ✓ Air conditioning
- ✓ Potable water
- ✓ Seating and tables
- ✓ Refrigeration for medicine and baby needs
- ✓ Interior and area lighting
- ✓ Communications capability such as Wi-fi access, sat phone, radio, cellular phone etc.
- ✓ Televisions
- ✓ On-site medical support (EMT-A at a minimum, Paramedic preferred)
- ✓ Charging stations, including for medical devices
- ✓ Air Purifiers
- ✓ Air Quality Monitors
- ✓ Non-perishable snacks
- ✓ Small crates for pets
- ✓ Portable ADA ramp
- ✓ On-site security
- ✓ Restroom facilities

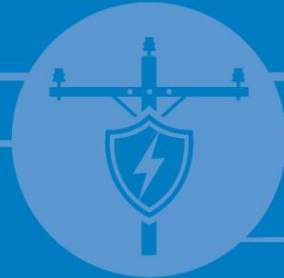


Community Resource Centers

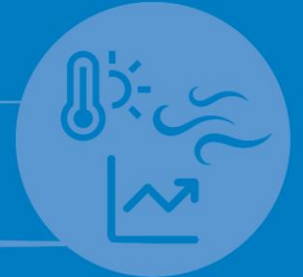


Preparedness & Resources

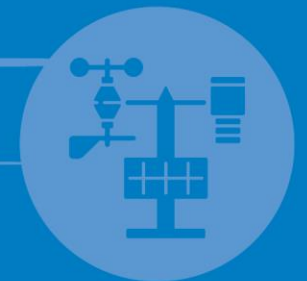
SYSTEM STRENGTHENING



WEATHER MONITORING



VEGETATION
MANAGEMENT



TECHNOLOGY

Update contact info and sign up for alerts

PacificPower.net/Account

1-888-221-7070

PacificPower.net/Alerts



Create defensible space at home

- Trim trees and bushes and clear dead vegetation
- Use low-growing and fire-resistant plants.
- Keep firewood and propane tanks more than 30 feet from your home.
- Cover exterior vents with metal mesh wire and keep gutters and decks cleared.
- Use materials and designs that are more fire-resistant for home improvement projects

Make a plan and refresh your kit

- 2–3-week supply of food and water
- Backup power supply
- Emergency kit with flashlights, batteries, first aid, medication, cash, phone numbers, important documents
- Designate an emergency meeting location

Accessibility programs outreach resources



Accessibility programs webpage

- AFN self-certification
- Medical certificate
- Backup power safety
- Financial assistance
- Communication support (350 languages)
- PSPS
- Update contact info
- Get alerts
- Contact us
- AFN flyers and Toolkit



Simplified accessibility programs flyer

- Customer programs
- How to get more information:
 - Accessibility programs website
 - QR code
 - How to talk with a real person 24/7



Tenant preparedness flyer

- What is a PSPS
- Make an emergency plan
- Preparedness website
- Outage map
- Local resources
- Medical certificate
- AFN self-certification
- Backup power safety
- How to get more information:
 - Website links
 - QR code
 - How to talk with a real person 24/7



Accessibility programs toolkit for partners

- Website copy
- Social media posts
- Customer program flyers
- Wildfire materials
- Videos



What would make this toolkit more useful for your organization?

All materials in English and Spanish

Member Engagement Opportunity



Purpose of this segment:



Review May 1:1 conversation framework



Gather member feedback to evaluate the relevance of the conversation framework



Identify opportunities to refine the framework so discussions remain member-centered and aligned with community need

May 1:1s in Community

Conversation Agenda



Introductions



Background



Community Challenges



EAG Feedback

MAY '26

SUN

MON

TUE

WED

THU

FRI

SAT

01 02

03 04 05 06 07 08 09

10 11 12 13 14 15 16

17 18 19 20 21 22 23

24 25 26 27 28 29 30

31

Conversation Framework Review

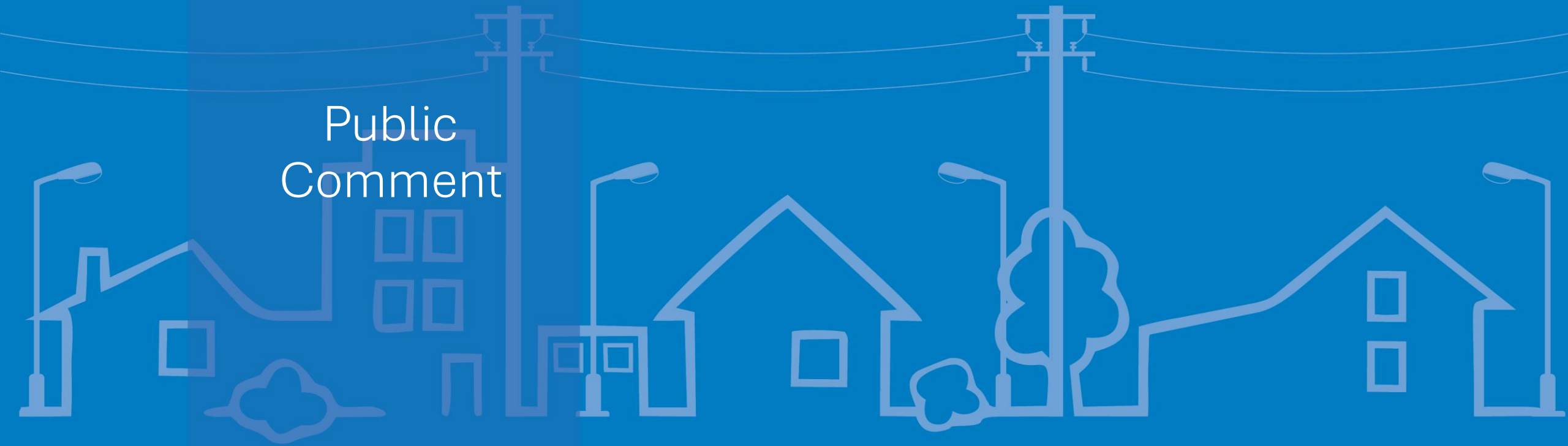
Meeting Agenda

Introductions	<ul style="list-style-type: none"> <input type="checkbox"/> Name, associated organization/group <input type="checkbox"/> PacifiCorp introductions <input type="checkbox"/> A little bit about yourself <input type="checkbox"/> Reason for joining the EAG/reason for continued engagement
Background	<ul style="list-style-type: none"> <input type="checkbox"/> How did you get started at [Organization/Group Name]? <input type="checkbox"/> Can you describe the key roles [Organization/Group Name] plays in the community? <input type="checkbox"/> Has participation in the EAG helped support your mission, either personal or organizational?
Community Challenges	<ul style="list-style-type: none"> <input type="checkbox"/> What are some of the biggest challenges you/your community is facing? <input type="checkbox"/> Are there any energy related challenges you have noticed in your community? <input type="checkbox"/> If you could solve one energy problem in Yakima/Walla Walla, what would it be? <input type="checkbox"/> Which of the programs that we have shared with the EAG so far do you think will be most beneficial to your community/organization and why?
EAG Feedback	<ul style="list-style-type: none"> <input type="checkbox"/> How would you characterize your experience with the EAG so far? What is going well and what are you looking forward to working on together? <input type="checkbox"/> Is there anything you are hoping to get out of the EAG meetings that you have not gotten so far? What might that look like? <input type="checkbox"/> How could we make meetings more effective? Engaging? <input type="checkbox"/> Are there any other topics we have not covered that you would like to cover?

Discussion Questions

1. Is there anything you would add or remove from the agenda to make the conversation more meaningful?
2. Do the questions allow you to openly describe the challenges your community faces?
3. Are any important topics missing from the agenda?
4. How effective is this agenda in supporting open dialogue and relationship-building?
5. What changes would make future 1:1 meetings more productive or engaging?

Public
Comment



Next Steps



[2026 EAG ZOOM MEETING LINK](#)

Meeting ID: 89041611254

Passcode: 288762

Proposed meeting dates:

January 8, 2026

February 12, 2026

March 12, 2026

April 9, 2026

May (Community 1:1s)

June 11, 2026

July 9, 2026

August 2026 (No Session)

September 10, 2026

October 8, 2026

November 2026 (No Session)

December 10, 2026

Next Steps

Equity Advisory Group Calendar

May | One-on-One Visits

June 11, 2026 | 1:00 - 4:00pm PT

Online via Zoom:

<https://esource.zoom.us/j/89041611254?pwd=i3kaM7IXSAixmnaWRIFHvVutc4Hd4L.1>

Spanish materials will also be available following each session.

Pacific Power Resources

For more information:

[Washington Clean Energy Implementation Plan](#)

Washington Feedback Tracker:

[Washington CEIP Feedback Tracker](#)

Washington Energy Resource Center:

[Energy Resource Center \(pacificpower.net\)](#)