




Washington DSM Advisory Group Meeting

May 7, 2026

Agenda

- Draft 2025 Annual Report & Draft 2024-2025 Biennial Conservation Report – **Consult/Discuss**
- 2027 Conservation Potential Assessment – **Inform**
- 2026-2027 DSM Forecast – **Inform and Discuss**
- Clean Energy Transformation Act Updates
 - 2025 CBI Metrics Review – **Inform and Discuss**
 - Clean Energy Implementation Plan Compliance Report – **Inform**
 - Equity Advisory Group - **Inform**
- Recent Filings & Upcoming Drafts – **Inform**
- Comment/Q&A Period
- Wrap-up



Draft 2025 Annual Report & Draft 2024-2025 Biennial Conservation Report

Zac Hymes

Draft 2025 Annual Report

2025 Annual Conservation Plan vs 2025 Actuals

Energy Efficiency Program	2025 PacifiCorp Washington Annual Conservation Plan			2025 PacifiCorp Washington DSM Actual		
	kWh Savings (at site)	kWh Savings (at gen)	Estimated Systems Benefit Expenditures	kWh Savings (at site)	kWh Savings (at gen)	Estimated Systems Benefit Expenditures
Low Income Weatherization (114)	138,210	148,819	\$1,145,873	79,364	85,456	\$826,219
Home Energy Savings (118)	4,754,332	5,119,275	\$6,555,468	4,439,330	4,780,093	\$6,698,045
Home Energy Reports (N/A)	3,741,000	4,028,159	\$355,007	3,409,556	3,671,274	\$310,342
Total Residential Programs	8,633,542	9,296,253	\$8,056,348	7,928,249	8,536,822	\$7,834,606
Wattsmart Business (140) - Commercial	24,870,175	26,760,805	\$10,579,771	24,983,754	26,883,019	\$8,834,995
Wattsmart Business (140) - Industrial	6,379,815	6,814,599	\$2,577,269	14,636,693	15,634,183	\$5,175,967
Wattsmart Business (140) - Irrigation	1,232,498	1,327,105	\$530,661	163,600	176,158	\$57,854
Total Wattsmart Business Program	32,482,488	34,902,509	\$13,687,701	39,784,047	42,693,361	\$14,068,816
Northwest Energy Efficiency Alliance	5,042,177	5,479,287	\$1,001,754	5,056,587	5,444,058	\$724,728
Distribution Efficiency	227,000	243,993		910,632	978,801	0
Production Efficiency	630	630		0	0	0
Total Other Conservation Initiatives	5,269,807	5,723,910	\$1,001,754	5,967,219	6,422,860	\$724,728
Be Wattsmart, Begin at Home			\$73,552			\$58,638
Customer outreach/communication			\$250,000			\$432,188
Program Evaluations (& savings verification)			\$159,503			\$224,246
Potential study update/analysis			\$25,000			\$170,530
System Support			\$68,416			\$23,562
End use load research			\$33,363			\$10,836
Regional Technical Forum (RTF) funding			\$43,400			0
Total Portfolio-Level Expenses			\$653,234			\$920,001
Total PacifiCorp Conservation	41,343,660	44,443,385	\$22,397,283	48,622,928	52,208,984	\$22,823,422
Total System Benefits Charge Conservation	46,385,837	49,922,672	\$23,399,037	53,679,515	57,653,042	\$23,548,151

PAC kWh Savings

116% of Annual Conservation Plan

- Residential – 92%
- Business – 122%

PAC Expenditures

102% of Annual Conservation Plan

- Residential – 97%
- Business – 103%

NEEA kWh Savings

100% of Annual Conservation Plan

Draft 2024-2025 Biennial Report

Biennial Conservation Plan Targets vs Results

<u>Category</u>	Approved Savings Target (MWh @ site)	2024-2025 Savings Results (MWh @ site)	Excess Conservation from prior Periods (MWh @ site)	% of Target
i. Ten-year potential	406,486			
ii. Two-year EIA target (includes NEEA)	90,723	94,188	0	104%
iii. Two-year EIA Penalty Threshold (excludes NEEA)	74,839	84,676	0	113%
iv. Two-year Decoupling Penalty Threshold (5% of EIA Target)	4,249			
v. Two-year Utility Conservation Goal (EIA Target + Decoupling)	89,220	94,188	0	106%

*Categories of Approved Savings Targets from UE-230904 Order 01 Attachment A

<u>Category</u>	Approved Savings Target (MWh @ site)	2024-2025 Savings Results (MWh @ site)	Excess Conservation for Subsequent Biennia (MWh @ site)
iii. Two-year EIA Penalty Threshold (excludes NEEA)	74,839		
iv. Two-year Decoupling Penalty Threshold (5% of EIA Target)	4,249		
a. Total Target for Calculating Excess Conservation (iii. + iv.)	79,088		
b. 2024-2025 Savings Result (excluding NEEA)		84,676	
c. Excess Conservation for 2026-2027 or 2028-2029 Biennia (b. - a.)			5,588

Savings Results in both tables above are **after** adjustments, as detailed in later slides

Draft 2024-2025 Biennial Report

From Annual Reports (Prior to Adjustments)

Energy Efficiency Program	2024 PacifiCorp Washington DSM Actual			2025 PacifiCorp Washington DSM Actual		
	kWh Savings (at site)	kWh Savings (at gen)	Estimated Systems Benefit Expenditures	kWh Savings (at site)	kWh Savings (at gen)	Estimated Systems Benefit Expenditures
Low Income Weatherization (114)	111,780	120,360	\$638,487	79,364	85,456	\$826,219
Home Energy Savings (118)	4,478,058	4,821,794	\$6,773,210	4,439,330	4,780,093	\$6,698,045
Home Energy Reports (N/A)	3,953,070	4,256,508	\$455,501	3,409,556	3,671,274	\$310,342
Total Residential Programs	8,542,908	9,198,662	\$7,867,198	7,928,249	8,536,822	\$7,834,606
Wattsmart Business (140) - Commercial	23,974,669	25,797,223	\$10,708,103	24,983,754	26,883,019	\$8,834,995
Wattsmart Business (140) - Industrial	3,136,323	3,350,064	\$1,443,337	14,636,693	15,634,183	\$5,175,967
Wattsmart Business (140) - Irrigation	898,377	967,336	\$436,127	163,600	176,158	\$57,854
Total Wattsmart Business Program	28,009,369	30,114,623	\$12,587,567	39,784,047	42,693,361	\$14,068,816
Northwest Energy Efficiency Alliance	4,162,055	4,481,088	\$789,860	5,056,587	5,444,058	\$724,728
Distribution Efficiency	0	0	\$-	910,632	978,801	\$-
Production Efficiency	5,121	5,121	\$-	0	0	\$-
Total Other Conservation Initiatives	4,167,176	4,486,209	\$789,860	5,967,219	6,422,860	\$724,728
Be wattsmart, Begin at Home			\$70,883			\$58,638
Customer outreach/communication			\$150,531			\$432,188
Program Evaluations (& savings verification)			\$357,288			\$224,246
Potential study update/analysis			\$146,684			\$170,530
System Support			\$35,442			\$23,562
End use load research			\$29,964			\$10,836
Regional Technical Forum (RTF) funding			\$-			\$-
Total Portfolio-Level Expenses			\$790,792			\$920,001
Total PacifiCorp Conservation	36,557,398	39,318,406	\$21,245,557	48,622,928	52,208,984	\$22,823,422
Total System Benefits Charge Conservation	40,719,453	43,799,494	\$22,035,418	53,679,515	57,653,042	\$23,548,151

Comparison of 2025 to 2024 (2025 as % of 2024)

PAC kWh Savings – 133%

- Residential – 93%
- Business – 142%

PAC Expenditures – 107%

- Residential – 100%
- Business – 112%

Draft 2024-2025 Biennial Report

Adjustments

Home Energy Reports Savings Adjustments (in kWh)

Home Energy Reports	2024	Source/Explanation
	3,953,070	Claimed Gross Savings @ site
	3,209,705	Washington Home Energy Report Evaluation
	81%	Evaluated Net Realization Rate
	(743,365)	Savings adjustment @ site for Home Energy Reports 2024
	3,209,705	2024 Home Energy Reports Savings after adjustment

Home Energy Reports	2025	Source/Explanation
	3,409,556	Claimed Gross Savings @ site
	3,648,726	Washington Home Energy Report Evaluation
	107%	Evaluated Net Realization Rate
	239,170	Savings adjustment @ site for Home Energy Reports 2025
	3,648,726	2025 Home Energy Reports Savings after adjustment

NEEA Savings Adjustments (in kWh)

Program Year	Annual Savings Reported kWh (at site)	Revised Savings kWh (at site)	Net kWh Adjustment (at site)
2024	4,162,055	4,454,809	292,754
2025	5,056,587	5,056,588	1
Total	9,218,642	9,511,397	292,755

Summary of Adjustments (in MWh)

Adjustment (MWh)	2024	2025	Total
Home Energy Reports	-743	239	-504
NEEA	293	0	293
Total	-451	239	-211

Draft 2024-2025 Biennial Report

Annual and Biennial Results (Including Adjustments)

Energy Efficiency Program	2024 PacifiCorp Washington DSM Actual (w/ Adjustments)		2025 PacifiCorp Washington DSM Actual (w/ Adjustments)		2024-2025 PacifiCorp Washington DSM Actual (w/ Adjustments)	
	kWh Savings (at site)	Systems Benefit Expenditures	kWh Savings (at site)	Systems Benefit Expenditures	kWh Savings (at site)	Systems Benefit Expenditures
Low Income Weatherization (114)	111,780	\$638,487	79,364	\$826,219	191,144	\$1,464,706
Home Energy Savings (118)	4,478,058	\$6,773,210	4,439,330	\$6,698,045	8,917,388	\$13,471,255
Home Energy Reports (N/A)	3,953,070	\$455,501	3,409,556	\$310,342	7,362,626	\$765,843
<i>Home Energy Reports Adjustment for Evaluation Results</i>	<i>(743,365)</i>		<i>239,170</i>		<i>(504,195)</i>	<i>0</i>
Total Residential Programs	7,799,543	\$7,867,198	8,167,419	\$7,834,606	15,966,962	\$15,701,804
Wattsmart Business (140) - Commercial	23,974,669	\$10,708,103	24,983,754	\$8,834,995	48,958,423	\$19,543,098
Wattsmart Business (140) - Industrial	3,136,323	\$1,443,337	14,636,693	\$5,175,967	17,773,016	\$6,619,304
Wattsmart Business (140) - Irrigation	898,377	\$436,127	163,600	\$57,854	1,061,977	\$493,981
Total Wattsmart Business Program	28,009,369	\$14,068,816	39,784,047	\$14,068,816	67,793,416	\$28,137,632
Northwest Energy Efficiency Alliance	4,162,055	\$789,860	5,056,587	\$724,728	9,218,642	\$1,514,588
Distribution Efficiency	0	\$-	910,632	\$-	910,632	\$-
<i>NEEA Savings Reporting Adjustment</i>	<i>292,754</i>		<i>1</i>		<i>292,755</i>	
Production Efficiency	5,121	\$-	0	\$-	5,121	\$-
Total Other Conservation Initiatives	4,459,930	\$789,860	5,967,220	\$724,728	10,427,149	\$1,514,588
Be wattsmart, Begin at Home		\$70,883		\$58,638		\$129,521
Customer outreach/communication		\$150,531		\$432,188		\$582,719
Program Evaluations (& savings verification)		\$357,288		\$224,246		\$581,534
Potential study update/analysis		\$146,684		\$170,530		\$317,214
System Support		\$35,442		\$23,562		\$59,004
End use load research		\$29,964		\$10,836		\$40,800
Regional Technical Forum (RTF) funding		\$-		\$-		\$-
Total Portfolio-Level Expenses		\$790,792		\$920,001		\$1,710,793
Total PacifiCorp Conservation	35,814,033	\$22,726,806	48,862,098	\$22,823,422	84,676,131	\$45,550,228
Total System Benefits Charge Conservation	40,268,842	\$23,516,666	53,918,686	\$23,548,151	94,187,528	\$47,064,816

Next Steps

1. Seeking Input Today on Draft Reports Sent 5/1/2026

- 2025 Annual Report on Conservation Acquisition
- 2024-2025 Biennial Conservation Report

2. Written Comments Requested by Wednesday 5/15/2026

3. Final Versions to be Filed by 6/1/2026 in Docket UE-230904



2027 Conservation Potential Assessment

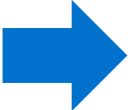
Alex Osteen

2027 Conservation Potential Assessment (CPA)

Docket UE-250825 Order 01 Attachment A	3	b	Advisory Group	PacifiCorp must also coordinate a meeting with Advisory Group members and the entity conducting the conservation potential assessment (CPA) addressing the scope and design of the CPA. Such a meeting must address the assumptions and relevant information utilized in the development of PacifiCorp's IRP as they apply to the development and/or modification of the ten-year conservation potential. This meeting must be held early enough in the IRP public process to incorporate the group's advice.
--	---	---	----------------	---


We are presenting additional detail and progress on the CPA today as a follow-up from the December Joint DSM and Equity Advisory Groups Meeting in compliance with Condition 3b from Order 01 in Docket UE-250825

2027 Conservation Potential Assessment (CPA) Work Plan



Task	Q4 2025	Q1 2026	Q2 2026	Q3 2026	Q4 2026	Q1 2027	Q2 2027
Task 1: Develop Work Plan*	Nov 2025						
Task 2: Research and Study Inputs*			May 2026				
Task 3: Analysis of DSM Potential*			<i>Initial Results</i> June 2026	<i>Final Results</i> July 2026	(Addtl QC & Feedback)	(Addtl QC & Feedback)	
Task 4: Scenario and Sensitivity Analysis				Sept 2026			
Task 5: Present Data and Reporting*					<i>Draft Report</i> Nov 2026	<i>Final Report</i> Mar 2027	
Task 6: Stakeholder Support*							Final Q&A

* Places in the study where stakeholders will be able to review and comment on interim deliverables



Energy Efficiency Updates

Dimitry Burdjalov
ICF

Baseline and Potential Considerations

ICF is developing baselines unique to how DSM planning is conducted in Washington. The baseline projection as well as efficiency and demand response potential will reflect:

State building and appliance efficiency codes and standards specific to Washington

- 2021 Washington State Energy Code (WSEC) – WAC 51-11R and WAC 51-11C
- Appliance efficiency standards – HB 1444
- Energy use intensity (EUI) targets from HB 1257 and SB 5722

Federal equipment efficiency standards currently on the books

- Updated with Washington-specific adjustments from HB 1444 (e.g., ENERGY STAR minimums for some food service equipment)

Baseline market data for equipment and measure saturation

- PacifiCorp surveys, project data
- Regional Technical Forum (RTF) and 9th Power Plan
- National and census region-specific saturation data

Measures recently deactivated by the RTF are not likely to be pursued by programs in Washington; these are not being included in the energy efficiency potential.

Residential Low-Income Segmentation: Updates to Annual Income Thresholds

Household Size	Washington
2025 CPA – Low Income Threshold Definitions	≤ 60% SMI for household <7, ≤ 200% Federal Poverty Level (FPL) for household ≥7
2027 CPA – Low Income Threshold Definitions	≤ 200% FPL or 60% State Median Income (SMI), whichever is greater.
1	\$40,888
2	\$53,469
3	\$66,050
4	\$78,632
5	\$91,213
6	\$103,794
7	\$106,153
8	\$108,512
9	\$119,300
10	\$130,300
Each additional person add:	\$11,000

- Moderate-Income threshold continues to be defined between low-income level and ≤ 100% of SMI
- Above-Moderate Income threshold continues to be defined as > 100% of SMI

Consistent with the Washington State Low-Income Weatherization Program 2025 Income Eligibility Guidelines

Ramp Rates

Ramp rates dictate the pace at which the potential is assumed to be achievable, separately for lost opportunity and retrofit measures

- Lost Opportunity rates indicate the percent of equipment up for replacement in a given year that is assumed to be upgraded
- Retrofit rates indicate the share of the 21-year* potential assumed to be acquired in a given year

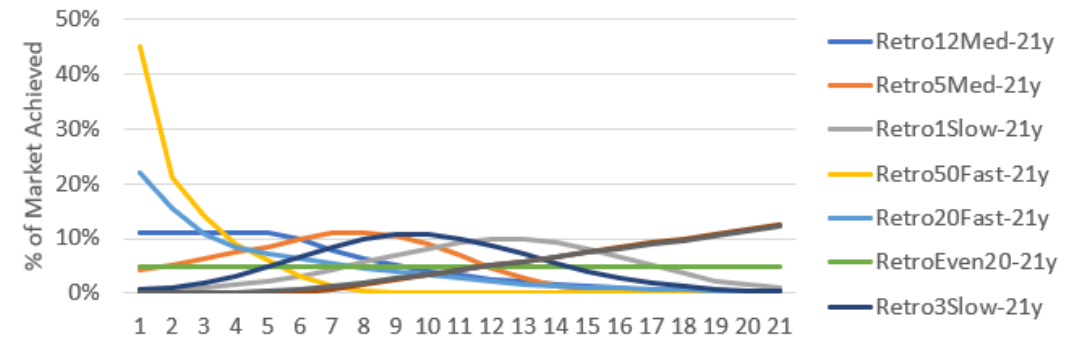
The study uses a set of S-shaped diffusion curves developed by the Northwest Power and Conservation Council, updated to 9th Power Plan

ICF analyzes PacifiCorp's recent state-specific program history to determine which ramp rate is most appropriate to apply

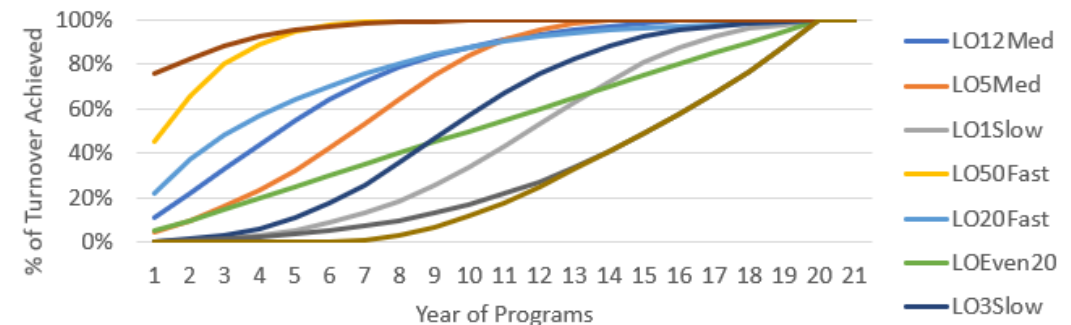
In the 2025 IRP, ICF collaborated with PacifiCorp to integrate Inflation Reduction Act (IRA) and Infrastructure Investment and Jobs Act (IIJA) impacts into the CPA by adopting faster ramp rates for measures targeting specific customer groups.

- In the 2027 IRP, we are reverting to ramp rates consistent with the Power Plan and program activity given the current federal developments around funding uncertainty, delays, and expiration by 2032 (expiring after year 6 of the study).

NWPCC 9PP - Retrofit Ramp Rates



NWPCC 9PP - Lost Opp. Ramp Rates



*PacifiCorp's IRP process requires a 21st year of potential to estimate future years' DSM savings. ICF has stretched the 20-year retrofit curve shapes out to 21 years to provide a reasonable estimate of this 21st year that respects the market transformation up to that point.

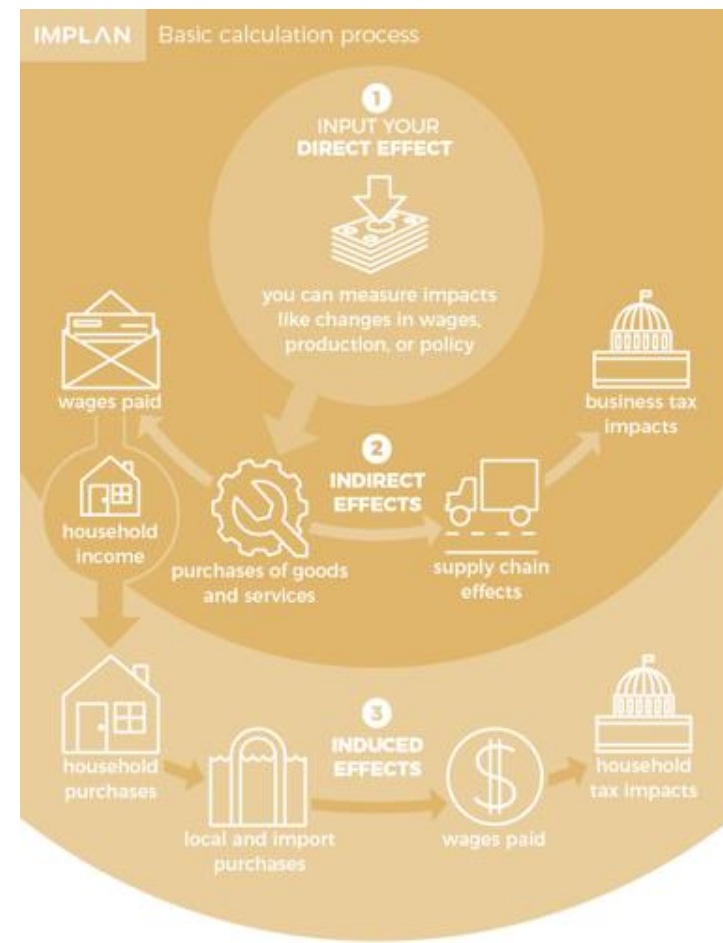
Reflecting Changes in Industrial Load

PacifiCorp is evaluating a Washington-specific CPA adjustment tied to the partial shutdown at the Packaging Corporation of America (PCA) plant in Wallula, as this is expected to materially affect Washington efficiency potential.

The direct effect on PacifiCorp's industrial load is already reflected in the utility load forecast, but ICF is further investigating the downstream effects of this shutdown on electricity use and purchasing power in the service area using a customized economic impact model in IMPLAN.

The economic impacts will be used to inform changes in efficiency adoption rates and elasticities and reflected in the energy efficiency potential.

Results to be included in future stakeholder presentations and documented in a memorandum.



Levelized Costs

Similar to savings, measure costs vary by jurisdiction.

- Assumptions presented from Table 2-3 in 2025 CPA Volume I report.
- The second table below walks through an example of the adjustments that ICF makes prior to levelizing measure costs for supply curves, which are based on the state-specific cost-effectiveness test.

Levelized Costs Perspective for WA:

- State/Sector-Specific Line Losses
- Customer Cost
- Utility Investment
- Annual Incremental O&M
- Secondary Fuel Impacts
- Non-Energy Impacts
- 10% Conservation Credit
- T&D Deferral Benefits
- Risk Mitigation Benefits

Table 2-3 Economic Components of Levelized Cost by State

Parameter	WA	CA	WY	UT	ID
Cost Test	Total Resource Cost (TRC)		Utility Cost Test (UCT)		
Initial Capital Cost	Included (100% of incremental cost, full measure cost for retrofit measures)		Utility Incentive		
Annual Incremental O&M ²²	Included	Not Included			
Secondary Fuel Impacts ²²	Included	Not Included			
Non-Energy Impacts	Included	Not Included			
Administrative Costs (% of incremental cost)	51%	45%	52%	20%	43%
Incentive Costs (% of incremental cost)	n/a ²²		45%	34%	38%

Input	Washington
CE Test	TRC, 10% adder
Measure Cost	\$1,000
Incentive Paid	n/a
Utility Admin %*	51%
Admin Spend	\$510
Non-Energy Impact	\$80
Cost for Bundling	\$1,430

**Administrative costs will be updated during the 2027 study to reflect recent program expenditures.*

Non-Energy Impacts

ICF maps Non-Energy Impacts (NEIs) to measures analyzed within Washington's territory, supplemental to the impacts specified by the RTF.

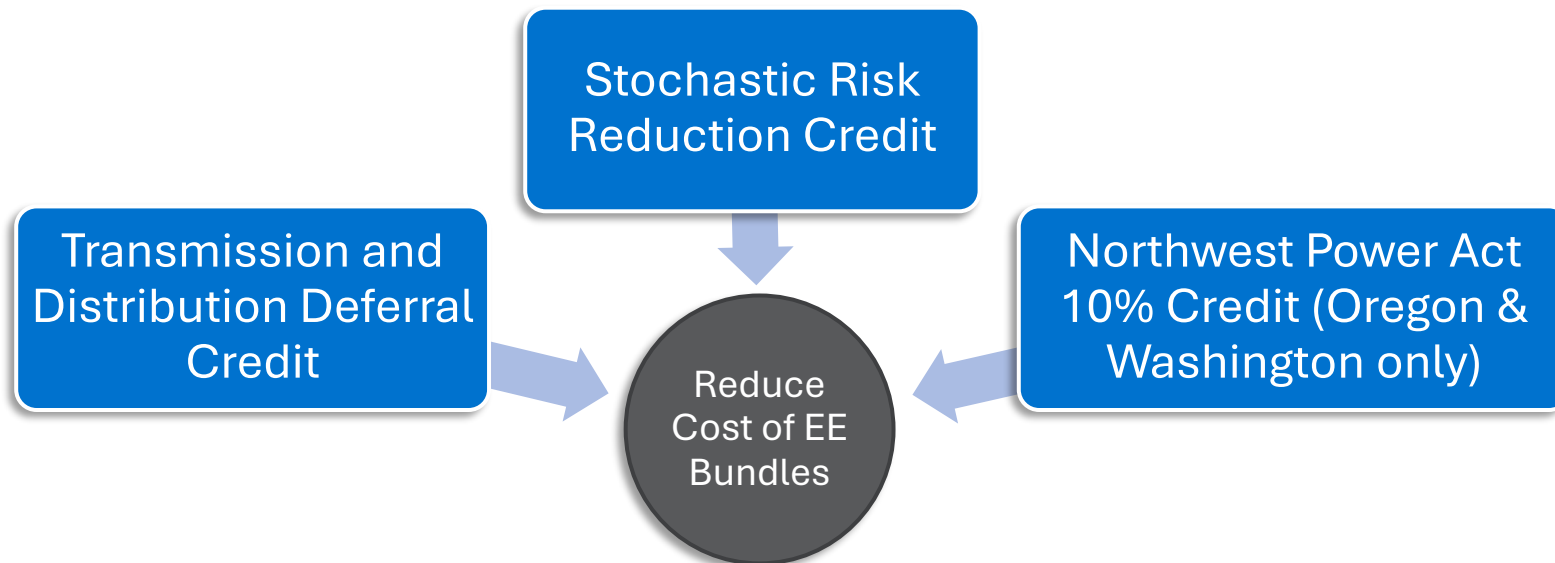
- NEIs were primarily sourced from DNV GL's study in the 2023 CPA for Washington. Includes revisions made with the DSM advisory group in 2022 and updates made in 2024.
- Includes recent updates made by ICF in 2025 based on new research and latest Low Income Weatherization program evaluation, covering adjusted NEIs for residential customers:
 - Avoided illness from pollution
 - Bad debt write-offs
 - Carrying cost on arrearages
 - Participant Thermal Comfort

NEIs are applied to savings in the model by specific measures and distributed to affected parties:

- Utility
- Customers
- Participant
- Vulnerable Population
- Highly Impacted Communities
- General Public

IRP Credits

The IRP incorporates three credits that reduce the modeled cost of energy efficiency bundles competing with supply-side resources in IRP modeling:



These credits are intended to capture benefits of energy efficiency that would otherwise not be reflected in IRP modeling. These credits are consistent with industry standards and with the Northwest Power and Conservation Council.



Demand Response Resources

Kate Peters
Brattle Group

Evaluating Demand Response

Definition and Program Structure

Demand Response (DR): Resources from fully dispatchable or scheduled firm capacity product offerings/programs such as direct load control. Previously Class 1 DSM.

A **DR Program** is one or more DR technologies called upon to perform grid services during a utility-initiated event.

Defined by three dimensions:

- Grid Service Provided
- Control Mechanism
- Technology Controlled

Example: CoolKeeper HVAC Direct Load Control (DLC) A central AC/HP with a DLC switch cycling during a peak event. Specific to one control mechanism and one technology.

Evaluation Goal and Scope

Quantify DR “technical achievable” potential – and associated costs – as inputs to 2027 IRP modeling

- Accounts for behavioral limitations (e.g., achievable enrollment) but does not screen for cost-effectiveness
- Washington is evaluated as a standalone jurisdiction

Important considerations:

- Identified potential is not a forecast of what is most likely to happen. It represents the maximum amount of the resource that is achievable and could be selected through the 2027 IRP.
- The CPA does not screen for cost-effectiveness. It establishes program-level cost and operational parameters inputs to the IRP model.

Evolving Considerations for DR

Growing Interest in DR

- Rising capacity needs from load growth, combined with constraints on conventional supply, are elevating DR's strategic importance.
- Continued adoption of flexible consumer energy technologies, including electric vehicles (EVs), smart thermostats, and heat pump water heaters, expand the addressable resource base.
- Potential for demand flexibility as a tool to address affordability concern.

Headwinds Remain

- Wholesale market participation requirements (e.g., telemetry obligations) can present challenges
- Customer willingness to cede control of new devices to third parties remains a meaningful behavioral constraint.
- Operational constraints (e.g., event duration and frequency) can limit resource value
- Investments needed to enable full range of DR benefits (e.g., for full visibility and control)

Updates in the 2027 CPA

Modeling Approach

- Using Brattle’s FLEX model to account for program-level dispatch capability and to capture tradeoffs when a single DR resource provides multiple sources of value
- Incorporating additional residential income-based segmentation for more granular potential estimates
- ICF and Brattle will develop a comprehensive set of DR measure and program assumptions, drawing on PacifiCorp-specific program data where available and supplementing with market research.

New Resources Under Investigation

- Light and medium-duty bi-directional charging (V2G)
- Managed fleet charging for electric MHDV
- Modeling will account for feasible time horizon over which these options will be commercially scalable

Brattle’s *FLEX* Model Overview



DR Resource Options

Sustained Events: represent an event lasting at least one hour and providing customers either day-ahead or day-of notification in advance.

Fast Events: represent an event lasting less than one hour and providing customers advanced notification of fifteen minutes or less with a near-instantaneous response.

Program Category	Program Bundle	Eligible for Fast Event Potential?*	Existing or Planned Offering in WA?
Direct Load Control (Conventional)	Electric Vehicle Connected Charger Direct Load Control (DLC)	✓	X
	Electric light- and medium-duty vehicle-to-grid (LDMD V2G)	✓	-
	Fleet managed charging for medium-heavy duty vehicles (MHDV)	✓	-
	HVAC DLC (switch-based)	✓	X
	Irrigation Load Control	✓	X
	Pool Pump DLC	✓	-
	Domestic Hot Water Heater (DHW) Control	✓	-
Direct Load Control (Smart / Interactive)	DLC of Smart Home		-
	Connected Thermostats DLC		-
Energy Storage	Battery Energy Storage DLC	✓	X
Curtailment	Third-Party (Fast Event)	✓	X
	Third-Party (Sustained Event)		X

*All program bundles eligible for sustained events, some are eligible for fast events

Program Cost Framework

Cost Components

Measure Costs: Technology (e.g., connected EV charger) and enabling technology (e.g., DLC switch)

Incentives: Annual, per-event, or both

Utility Administrative Costs: Staff, program development, marketing.

DR Credits Applied in IRP Modeling

Capture benefits not otherwise reflected in the IRP's supply-side cost comparison

Transmission and Distribution (T&D) Deferral

Credit: \$/kW-year, set at the state level

Operating Reserve Credit: applied for contingency and regulation reserves

Participant Costs - Washington

Estimated to satisfy Total Resource Cost (TRC) test requirements. Based on California DR Cost-Effectiveness Protocol: lower percentages reflect less intrusive programs.

Example values from the 2025 CPA provided below, for further review and update in the 2027 CPA.

Program	Participant Cost (% of Incentive)
HVAC Direct Load Control (DLC)	35%
Domestic Hot Water Heater (DHW) DLC	25%
Connected Thermostat DLC	35%
Smart Home DLC	75%
Pool Pump DLC	75%
Electric Vehicle DLC Smart Chargers	75%
Battery Energy Storage DLC	75%
Third Party Contracts	75%
Irrigation Load Control	75%

A stylized, light blue line-art illustration of a city skyline is centered on a dark blue background. The skyline includes various buildings of different heights and shapes, several streetlights, and two utility poles with power lines stretching across the scene. The overall aesthetic is clean and modern.

Non-IRP Resources

Kate Peters
Brattle Group

Demand-Side Rates

- Voluntary rate options that reduce demand during peak periods (e.g., time-of-use rates)
- Significant difference in resource firmness
 - Utility can rely on DR program impacts through direct control or contractual agreement
 - Customers' response to varying rate design is dependent on their desire to respond to economic signals
 - **IRP does not model incremental demand-side rate potential as a resource**
- Assumption development process similar to DR, but delivery cost is not assessed in CPA
- Rate designs modeled in CPA: only those that are incremental to the baseline forecast (e.g., existing block rates are omitted)

“The Arc of Price Responsiveness”

From ~400 residential time-varying rate offerings



Demand-Side Rate Options

Critical Peak Pricing (CPP)

- Much higher rate for a block of hours that occurs only on event days. Requires AMI technology.

Peak Time Rebates (PTR)

- Rebates for reduced consumption for a block of hours that occurs only on event days. Requires AMI technology.

Time-of-Use (TOU)

- Higher rate for a block of higher-cost hours that occurs every day. Requires either on/off peak meters or AMI technology.

Real Time Pricing (RTP)

- Variable hourly rates based on real-time utility production costs. Requires AMI technology.

Residential Behavioral DR

- Peak event alerts prompting households to voluntarily reduce usage, without direct load control or incentives.
- Considered as an Education & Information measure

2026-2027 DSM Forecast

Zac Hymes



April 2026 Forecast – 2026 Outlook

Program or Initiative	DSM 2026 Business Plan 10/31/2025 rev 01/08/2026		2026 Forecast 4/15/2026		Current Forecast % of 2026 Business Plan	
	2026		2026		2026	
	Gross kWh/Yr Savings @site	Estimated Expenditures	Gross kWh/Yr Savings @site	Estimated Expenditures	Gross kWh/Yr Savings @site	Estimated Expenditures
Low Income Weatherization (114)	72,380	\$ 920,085	72,362	\$ 920,064	100%	100%
Wattsmart Homes (118)	4,793,578	\$ 8,390,957	3,937,944	\$ 7,764,957	82%	93%
Home Energy Reports (N/A)	2,616,000	\$ 343,565	3,279,036	\$ 349,819	125%	102%
Total Residential Programs	7,481,958	\$ 9,654,608	7,289,342	\$ 9,034,840	97%	94%
Wattsmart Business (140) - Commercial	25,461,218	\$ 10,619,778	18,758,523	\$ 7,856,725	74%	74%
Wattsmart Business (140) - Industrial	8,838,107	\$ 3,359,856	13,156,579	\$ 5,510,435	149%	164%
Wattsmart Business (140) - Irrigation	1,240,694	\$ 529,161	150,061	\$ 62,851	12%	12%
Total Wattsmart Business Program	35,540,020	\$ 14,508,795	32,065,162	\$ 13,430,010	90%	93%
Northwest Energy Efficiency Alliance	3,913,945	\$ 1,132,292	3,913,945	\$ 1,132,292	100%	100%
Distribution Efficiency	62,800		62,800		100%	
Production Efficiency	-		-		-	
Total Other Conservation Initiatives	3,976,745	\$ 1,132,292	3,976,745	\$ 1,132,292	100%	100%
Be wattsmart, Begin at Home		\$ 74,655		\$ 74,655		100%
Customer outreach/communication		\$ 250,000		\$ 250,000		100%
Program Evaluations (& savings verification)		\$ 327,445		\$ 327,445		100%
Potential study update/analysis		\$ 170,000		\$ 170,000		100%
Planning support		\$ 75,000		\$ 75,000		100%
System Support		\$ 10,570		\$ 10,570		100%
End use load research		\$ 10,283		\$ 10,283		100%
Regional Technical Forum (RTF) funding		\$ 41,600		\$ 41,600		100%
Total Portfolio-Level Expenses		\$ 959,552		\$ 959,552		100%
Total PacifiCorp Conservation	43,084,778	\$ 25,122,955	39,417,305	\$ 23,424,402	91%	93%
Total System Benefits Charge Conservation	46,998,723	\$ 26,255,247	43,331,250	\$ 24,556,694	92%	94%

PAC kWh 2026 Forecast

91% of DSM Business Plan

- Residential – 97%
- Business – 90%

PAC \$ 2026 Forecast

93% of DSM Business Plan

- Residential – 94%
- Business – 93%

Notes:

- %s are % of DSM Business Plan, not % of EIA Targets
- Presenting April Forecast, as May forecast is in progress as of May 7

Orange = From 2026-2027 DSM Business Plan
Green = From Implementer Forecasts

April 2026 Forecast – 2026+2027 Outlook

Program or Initiative	2026 Forecast 4/15/2026		DSM 2027 Business Plan 10/31/2025 rev 01/08/2026		2026 Forecast + 2027 Business Plan		2026 Forecast + 2027 Business Plan - % to Business Plan	
	2026		2027		2026 + 20207		2026 + 20207	
	Gross kWh/Yr Savings @site	Estimated Expenditures	Gross kWh/Yr Savings @site	Estimated Expenditures	Gross MWh/Yr Savings @site	Estimated Expenditures	Gross MWh/Yr Savings @site	Estimated Expenditures
Low Income Weatherization (114)	72,362	\$ 920,064	72,380	\$ 1,047,241	145	\$ 1,967,305	100%	100%
Wattsmart Homes (118)	3,937,944	\$ 7,764,957	4,744,150	\$ 8,111,510	8,682	\$ 15,876,467	91%	96%
Home Energy Reports (N/A)	3,279,036	\$ 349,819	2,328,000	\$ 344,654	5,607	\$ 694,473	113%	101%
Total Residential Programs	7,289,342	\$ 9,034,840	7,144,530	\$ 9,503,405	14,434	\$ 18,538,245	99%	97%
Wattsmart Business (140) - Commercial	18,758,523	\$ 7,856,725	23,981,215	\$ 10,154,521	42,740	\$ 18,011,245	86%	87%
Wattsmart Business (140) - Industrial	13,156,579	\$ 5,510,435	7,713,491	\$ 3,080,731	20,870	\$ 8,591,166	126%	133%
Wattsmart Business (140) - Irrigation	150,061	\$ 62,851	1,250,694	\$ 547,118	1,401	\$ 609,969	56%	57%
Total Wattsmart Business Program	32,065,162	\$ 13,430,010	32,945,401	\$ 13,782,370	65,011	\$ 27,212,380	95%	96%
Northwest Energy Efficiency Alliance	3,913,945	\$ 1,132,292	4,376,972	\$ 1,133,016	8,291	\$ 2,265,308	100%	100%
Distribution Efficiency	62,800		-		63		100%	
Production Efficiency	-		-		-		-	
Total Other Conservation Initiatives	3,976,745	\$ 1,132,292	4,376,972	\$ 1,133,016	8,354	\$ 2,265,308	100%	100%
Be wattsmart, Begin at Home		\$ 74,655		\$ 75,775		\$ 150,430		100%
Customer outreach/communication		\$ 250,000		\$ 250,000		\$ 500,000		100%
Program Evaluations (& savings verification)		\$ 327,445		\$ 190,502		\$ 517,947		100%
Potential study update/analysis		\$ 170,000		\$ 33,250		\$ 203,250		100%
Planning support		\$ 75,000		\$ 75,000		\$ 150,000		100%
System Support		\$ 10,570		\$ 10,570		\$ 21,140		100%
End use load research		\$ 10,283		\$ -		\$ 10,283		100%
Regional Technical Forum (RTF) funding		\$ 41,600		\$ 43,100		\$ 84,700		100%
Total Portfolio-Level Expenses		\$ 959,552		\$ 678,197		\$ 1,637,749		100%
Total PacifiCorp Conservation	39,417,305	\$ 23,424,402	40,089,931	\$ 23,963,972	79,507	\$ 47,388,374	96%	97%
Total System Benefits Charge Conservation	43,331,250	\$ 24,556,694	44,466,903	\$ 25,096,988	87,798	\$ 49,653,682	96%	97%

PAC kWh 2026-2027 Forecast

96% of DSM Business Plan

- Residential – 99%
- Business – 95%

PAC \$ 2026-2027 Forecast

97% of DSM Business Plan

- Residential – 97%
- Business – 96%

Notes:

- %s are % of DSM Business Plan, not % of EIA Targets
- Presenting April Forecast, as May forecast is in progress as of May 7

Orange = From 2026-2027 DSM Business Plan
Green = From Implementer Forecasts

April 2026 Forecast – EIA Targets

Category	2026-2027 Targets	2026-2027 DSM Business Plan		2026 Forecast 4/15/2026 2026+2027	
	Gross MWh Savings @site	Gross MWh Savings @site	Plan % of Target	Gross MWh Savings @site	Forecast % of Target
i. Ten-year potential:	416,069				
ii. Two-year EIA target (includes NEEA):	83,214	91,466	110%	87,798	106%
iii. Two-year EIA Penalty Threshold (excludes NEEA):	74,923	83,175	111%	79,507	106%
iv. Two-year Decoupling Penalty Threshold (5% of EIA Target):	4,161				
v. Two-Year Utility Conservation Goal (EIA Target + Decoupling):	87,375	91,466	105%	87,798	100%
NEEA	8,291	8,291		8,291	100%
Two-year targets subject to penalty (EIA penalty threshold +decoupling penalty threshold)	79,084	83,175	105%	79,507	101%

<u>2026-2027 Expenditure Forecast (including NEEA):</u>	
2026-2027 DSM Business Plan (10/31/2025-rev 1/8/2026)	\$51,352,235
Apr 2026 Forecast	\$49,653,682
Apr 2026 Forecast % of 2026-2027 DSM Business Plan	97%

Actual Impacts to Program Savings

Nancy Goddard & Jay Olson

Wattsmart Business

- Lighting project, >500,000 kWh, customer stated that they would like to retrofit existing fixtures and increase the building footprint, but they have experienced a significant decrease in sales and cannot afford improvements at this time.

Wattsmart Homes

A shortage of magnesium anode rods is causing production delays and a shortage of equipment including heat pump water heaters. Contractors are unable to fulfill orders.

Any questions from the group, or thoughts on a forward path from these impacts?

Adaptive Management

Zac Hymes

Washington Department of Health updated their Environmental Health Disparity Scores (EHDS) and moved to the 2020 census, PacifiCorp updating to align

- Programs use WA Dept of Health website as one option to determine customer eligibility for higher incentives for customers located in a Named Community (CETA utility actions)
- PacifiCorp updated Vulnerable Population analysis to reflect WA Dept of Health changes
- Next step: update residential and business program customer eligibility checkers
- *Note: Whether a site qualifies for higher Named Community incentives is done as part of the project (prior to incentive payment), so 2026 participation will have a mix of current and new*

Named Community Category	Current WA Dept of Health Data	New (changes coming soon in 2026)
Highly Impacted Community (based on Washington Department of Health Environment Health Disparity Score: EHDS of 9 or 10 is HIC)	Version 2 EHDS data 2010 census tracts	Version 3 EHDS data 2020 census tracts
Highly Impacted Community (based on census tract all or partially on Tribal Lands)	2010 census tracts	2020 census tracts
Vulnerable Population (analysis by PacifiCorp)	Incorporates Version 2 EHDS data 2010 census tracts	Incorporates Version 3 EHDS data 2020 census tracts

Adaptive Management

Joe Larsen

Wattsmart Business

- The Wattsmart Business team hosted a Refrigeration and Compressed Air training at Yakima Valley College April 28th.
- Over 102 attendees registered from 30 companies in the greater Yakima area.
- Training included large-group presentations, but also allowed for many 1-on-1 conversations yielding many project leads among attendees



Docket UE-250825 Conditions

Docket UE-250825 Order 01 Attachment A	3	d	Advisory Group	PacifiCorp must inform the Advisory Group members when its projected expenditures indicate that PacifiCorp will spend more than 120 percent or less than 80 percent of its annual conservation budget.
Docket UE-250825 Order 01 Attachment A	3	e	Advisory Group	If PacifiCorp believes that an event beyond its reasonable control has occurred that may prevent it from meeting its combined EIA Penalty Threshold and Decoupling Penalty Threshold, PacifiCorp will confer with the Advisory Group members as soon as possible to determine a path forward. See RCW 19.285.040(1)(e) and RCW 19.285.060(2).

Energy efficiency forecasts and impacts being reported through program implementors are provided and discussed in each DSM Advisory Group meeting to comply with these Conditions

Clean Energy Transformation Act Updates

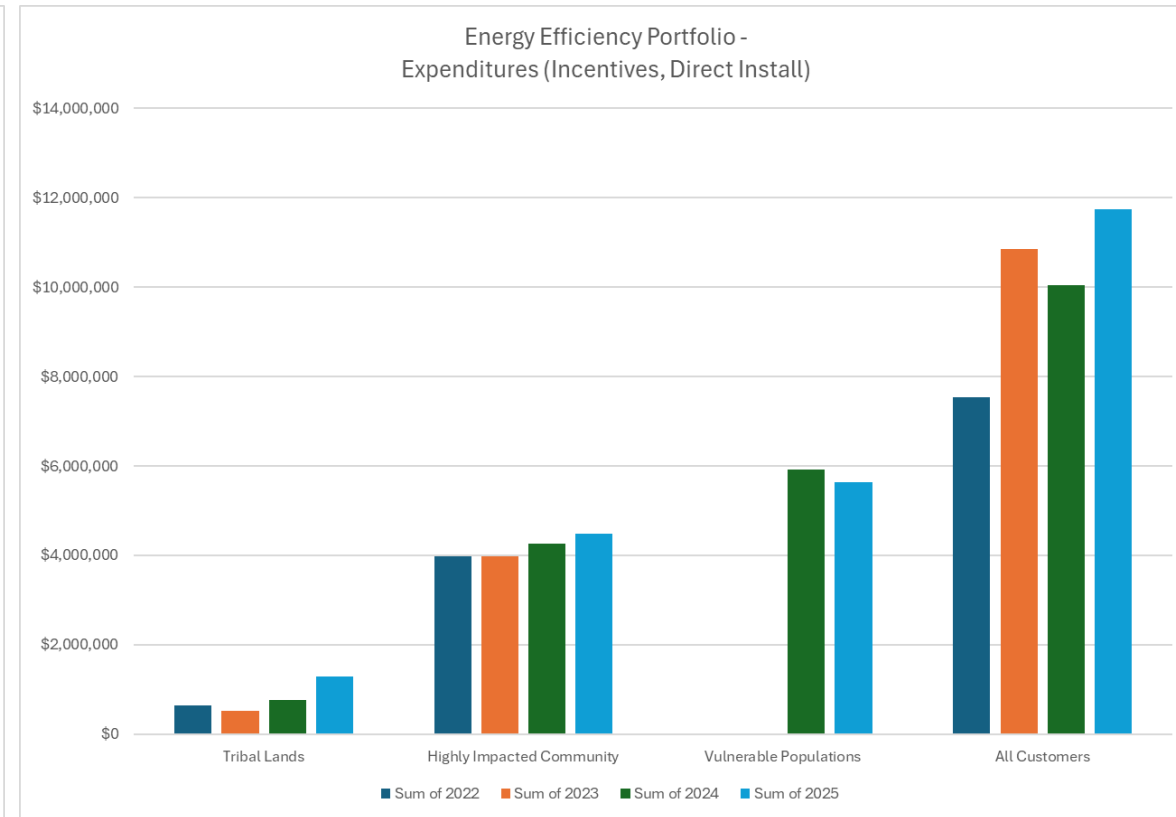
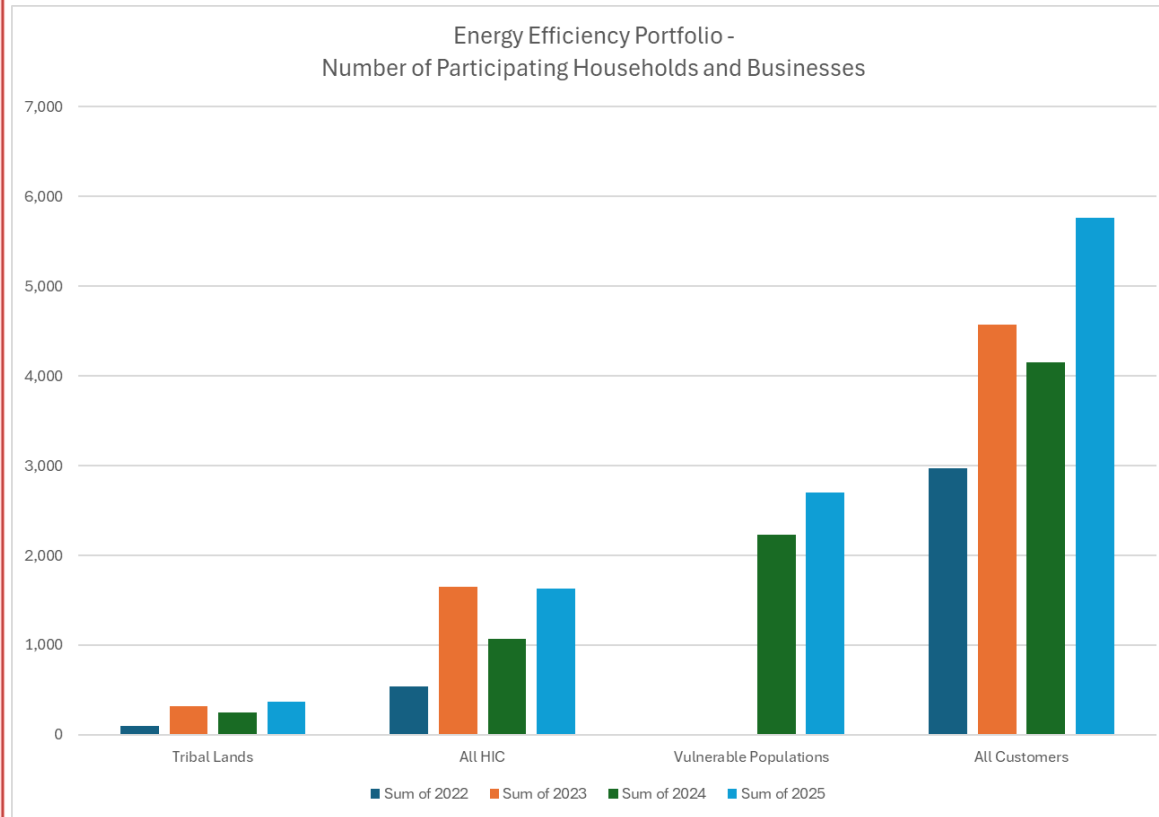


2025 CBI Metrics Preview

Zac Hymes



Energy Efficiency Program CBI metrics (Preliminary Data for 2025)



CETA Utility Actions – Wattsmart Homes

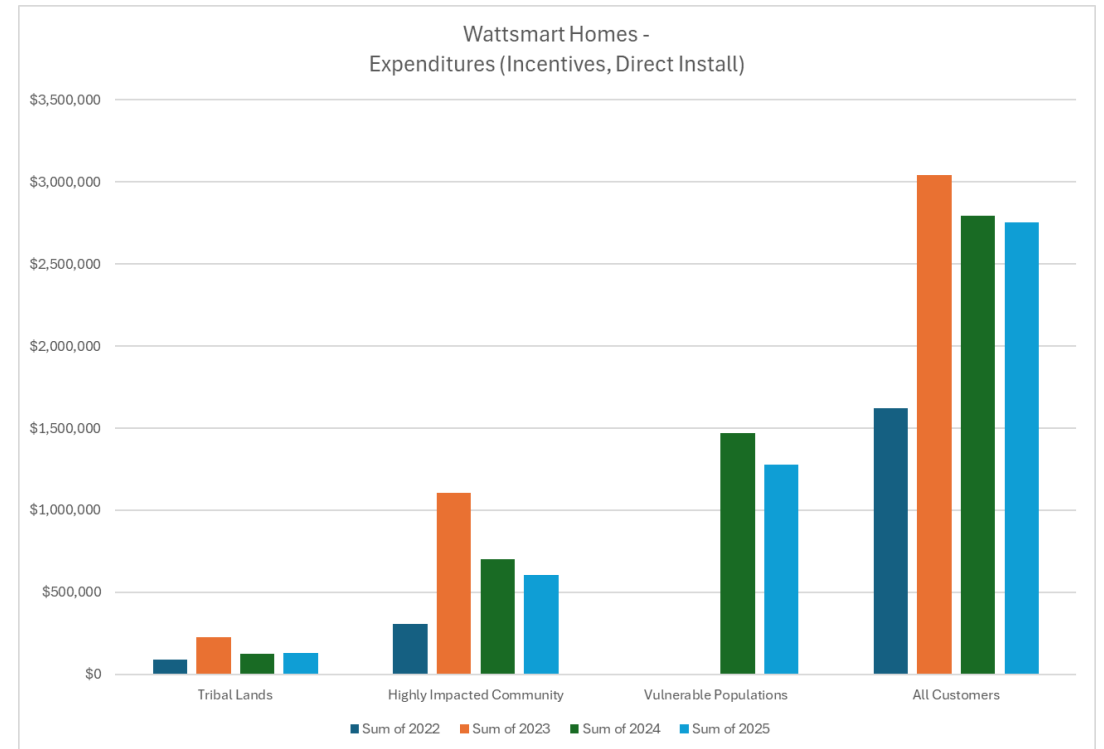
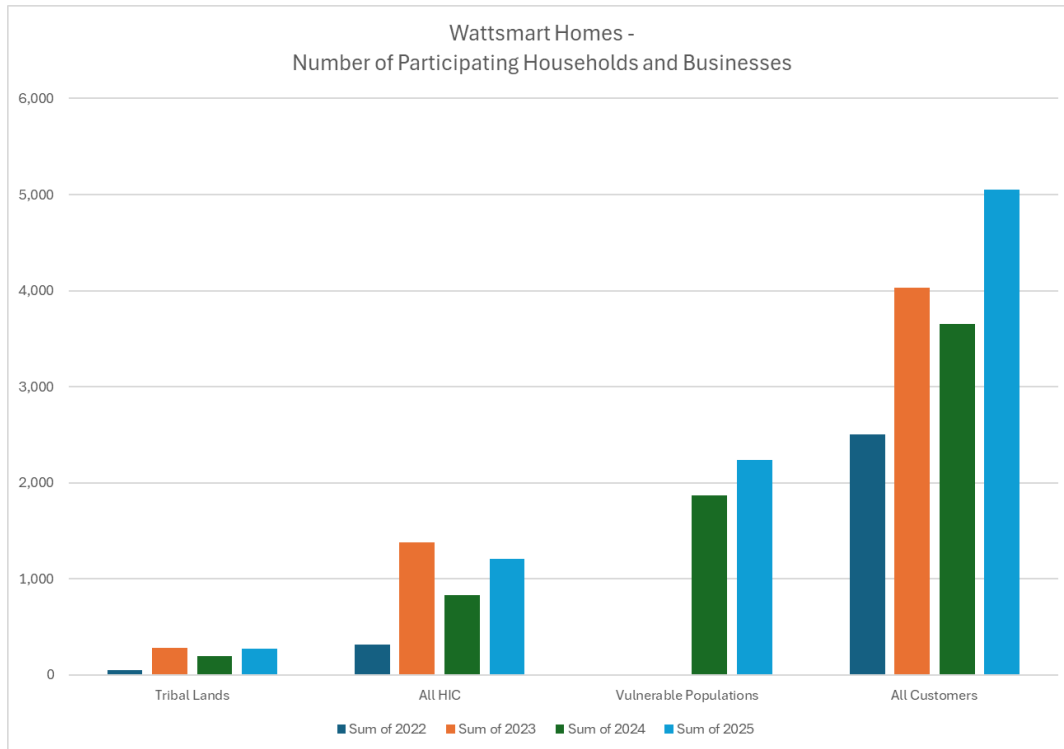
Highly Impacted Communities

Continued enhanced incentives for ductless heat pumps and heat pump conversions serving customers in Highly Impacted Communities.

Community-Based LED Distribution: Continued collaboration with community-based organizations to distribute LED bulb packs to customers located in Highly Impacted Communities.

Community Engagement Activities: Program staff participated in more than 20 community-hosted events and partner-led outreach activities designed to increase awareness of energy efficiency opportunities among Highly Impacted Communities.

Tree Planting: Partnered with a local nonprofit to implement a tree planning initiative, providing 121 shade trees to households in Yakima County.



CETA Utility Actions – Wattsmart Homes

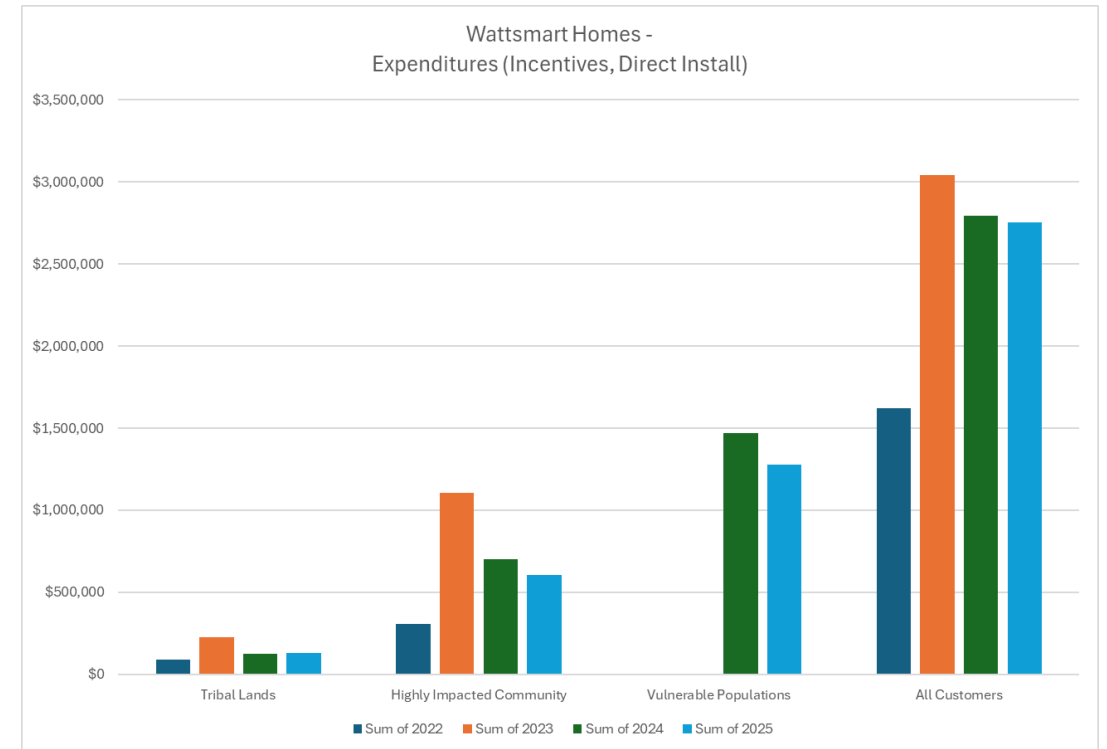
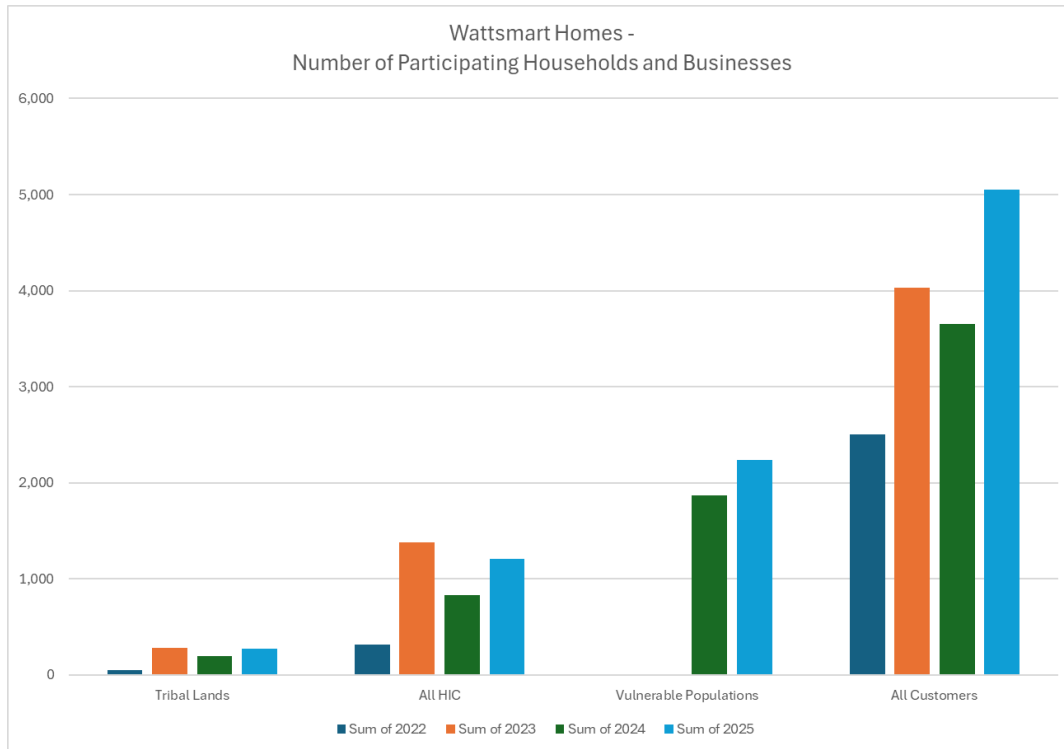
Vulnerable Populations

Enhanced Incentives for heat pump measures.

Direct Install Access for Renters: Direct install measures such as duct sealing and door sweeps provided accessible participation opportunities for renters and customers with limited ability to make major energy-efficient upgrades.

Spanish-Language Outreach: Continued program-wide efforts to improve engagement with Spanish-speaking customers through bilingual outreach and Spanish language program materials.

Community Event Participation: Bilingual program staff participated in community-hosted events, workshops, and partner-led outreach activities to increase awareness of energy efficiency incentives among underserved households.



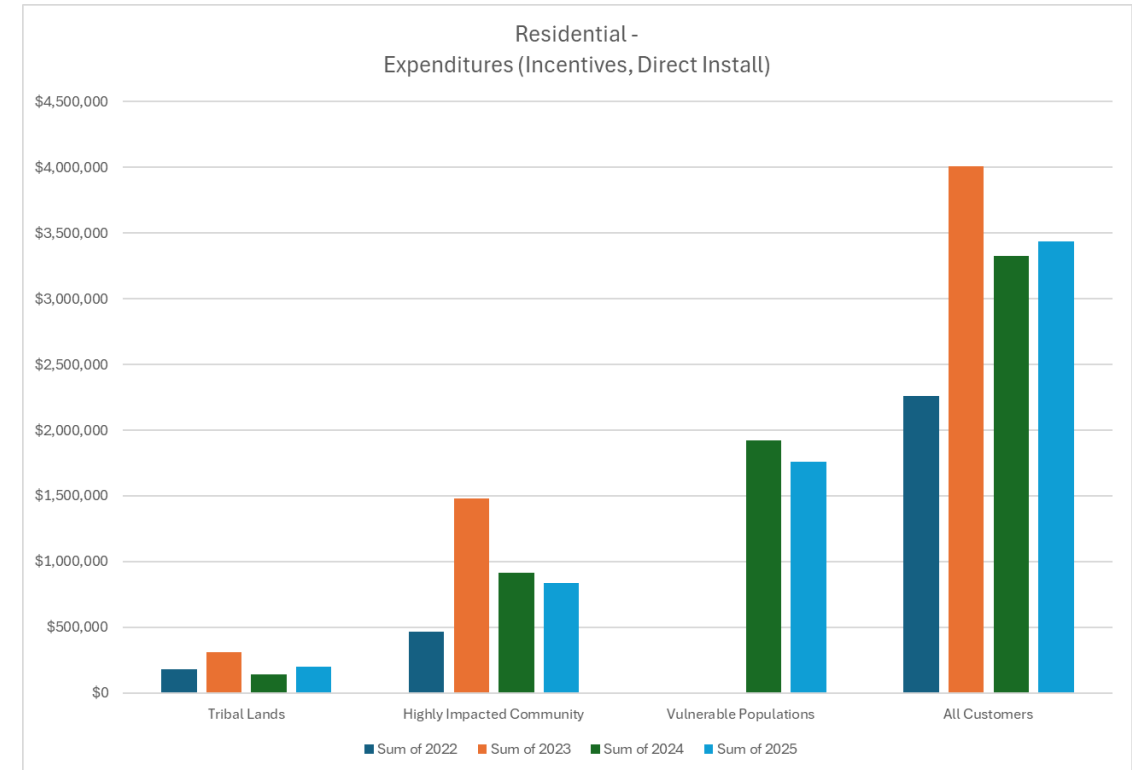
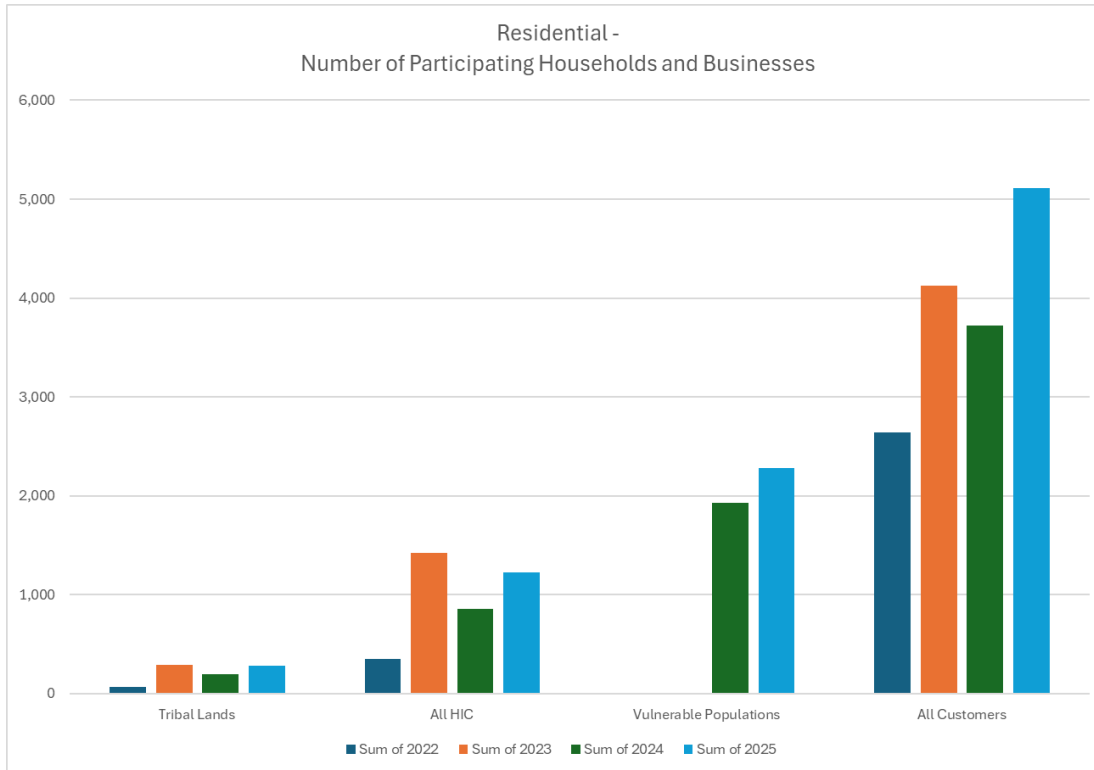
Energy Efficiency CBI Metrics – Residential

Number of Households Who Participated in Energy Efficiency Programs

Energy Efficiency Program	Tribal Lands				All HIC				Vulnerable Populations		All Customers			
	2022	2023	2024	2025	2022	2023	2024	2025	2024	2025	2022	2023	2024	2025
Home Energy Savings	48	280	193	270	318	1,378	827	1,204	1,868	2,234	2,503	4,031	3,654	5,053
Low Income Weatherization	16	11	2	9	30	42	26	24	61	44	141	95	69	60

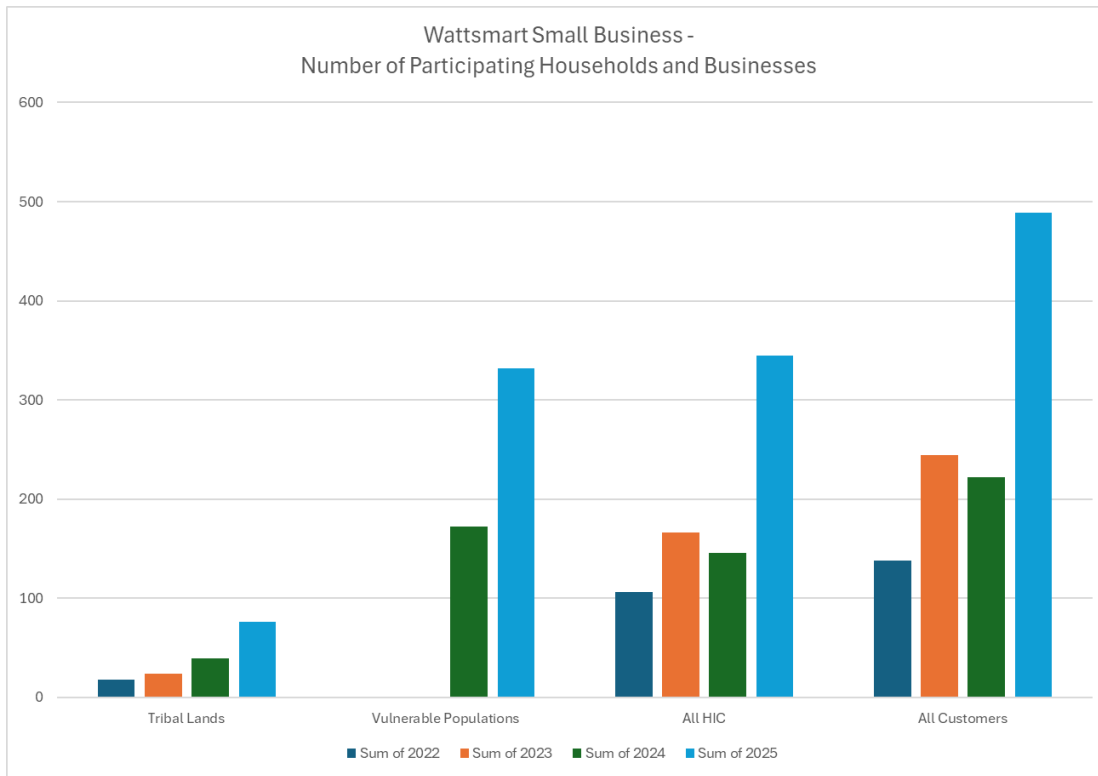
Energy Efficiency Program Expenditures

Energy Efficiency Program	Tribal Lands				All HIC				Vulnerable Populations		All Customers			
	2022	2023	2024	2025	2022	2023	2024	2025	2024	2025	2022	2023	2024	2025
Home Energy Savings	\$ 88,647	\$ 228,233	\$ 127,065	\$ 131,702	\$ 305,915	\$ 1,106,241	\$ 703,039	\$ 606,606	\$ 1,468,315	\$ 1,276,534	\$ 1,619,949	\$ 3,041,091	\$ 2,791,913	\$ 2,753,953
Low Income Weatherization	\$ 89,449	\$ 83,878	\$ 15,921	\$ 66,825	\$ 160,076	\$ 374,477	\$ 209,005	\$ 231,848	\$ 456,759	\$ 482,687	\$ 637,517	\$ 963,969	\$ 533,915	\$ 684,498

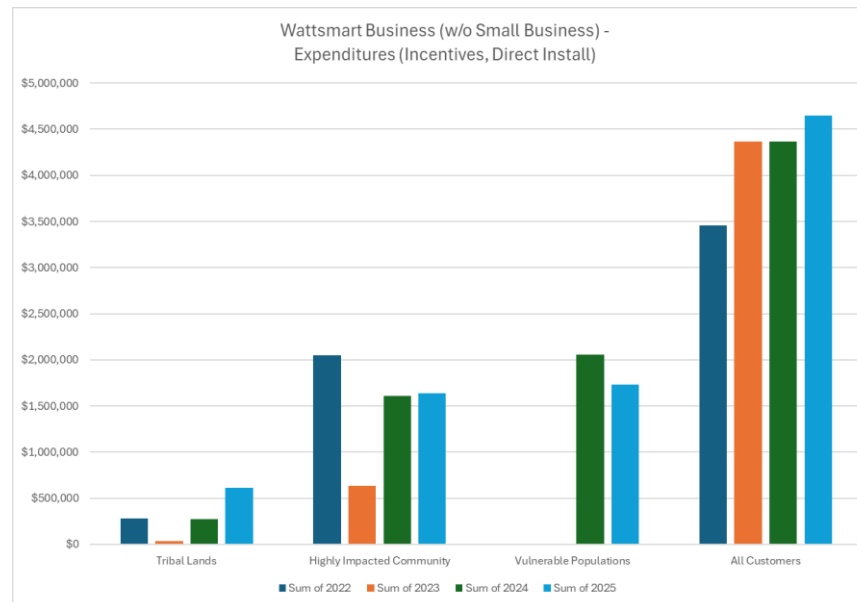
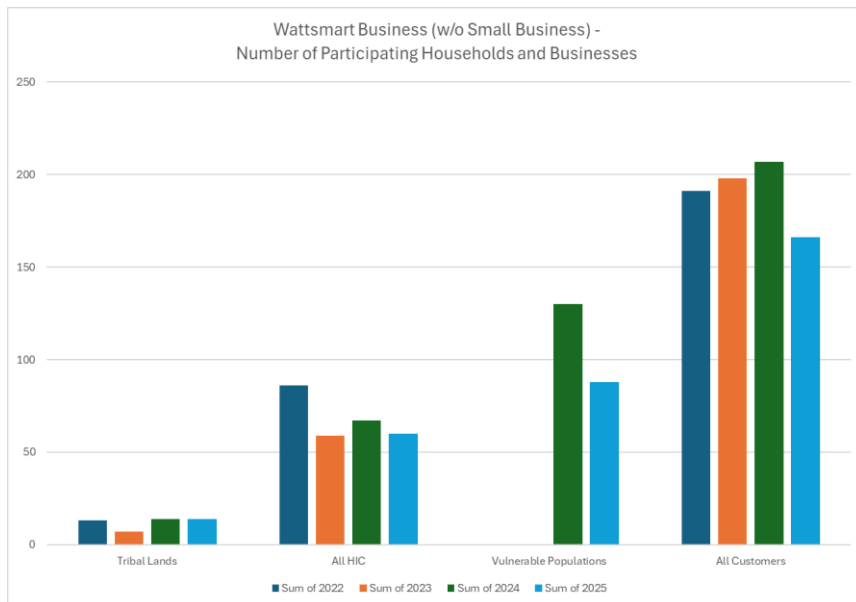
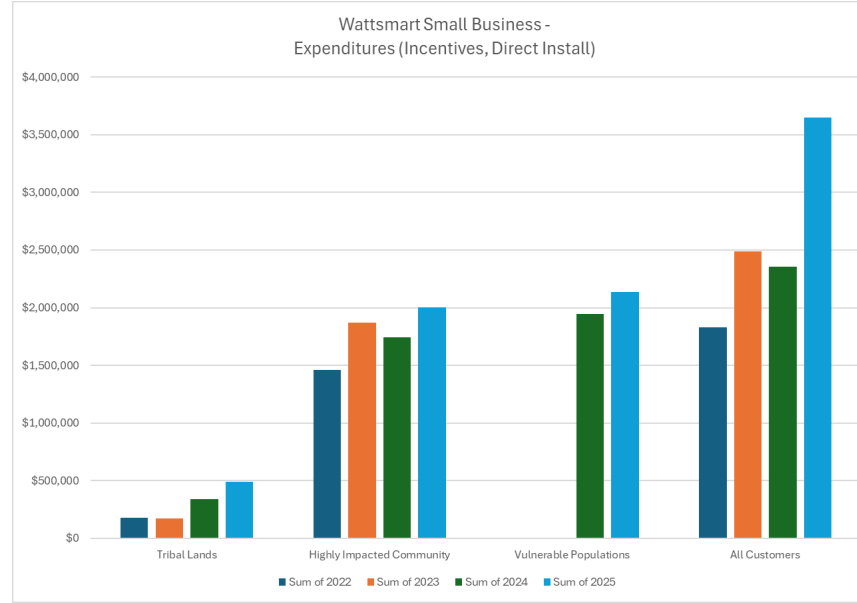


CETA Utility Actions – Wattsmart Business

Utility Actions for 2025	For small businesses not located in HIC	For small businesses located in HIC
Enhanced customer incentives	Example: \$0.50/kWh up to 90% of project costs	\$0.55/kWh up to 100% of project costs
Enhanced vendor incentives	\$300/small business project	\$500/small business project
Targeted Outreach, Materials in Spanish – conducted joint bilingual customer visits with trade allies to increase close rates, completed Yakama Nation video case study, implemented Spanish-language initiatives and updates to the Spanish website, and more.		



CETA Utility Actions – Wattsmart Business



Utility actions for small business are increasing
Named Community participation.

Balancing meeting EIA target and CETA objectives

Energy Efficiency CBI Metrics - Wattsmart Business

Number of Businesses Who Participated in Energy Efficiency Programs

Energy / Efficiency Program	Tribal Lands				All HIC				Vulnerable Populations		All Customers			
	2022	2023	2024	2025	2022	2023	2024	2025	2024	2025	2022	2023	2024	2025
Wattsmart Business	13	7	14	14	86	59	67	60	130	88	191	198	207	166
Wattsmart Small Business	18	24	39	76	106	166	146	345	172	332	138	244	222	489
1. Very Small Business (<= 30k kWh)	4	10	22	40	38	58	55	168	65	155	46	89	94	223
2. Small Business (<= 145k kWh)	12	13	13	29	58	83	75	145	87	146	75	121	105	213
3. Small Business (<= 200k kWh)	2	1	2	5	7	13	6	20	8	20	12	19	10	30
4. Small Business (<= 300k kWh)	0	-	2	2	2	9	9	12	11	12	2	13	12	23
5. Small Business (> 300 kWh)	0	-	-	-	1	3	1	1	1	1	3	4	1	2

Energy Efficiency Program Expenditures

Energy Efficiency Program	Tribal Lands				All HIC				Vulnerable Populations		All Customers			
	2022	2023	2024	2025	2022	2023	2024	2025	2024	2025	2022	2023	2024	2025
Wattsmart Business	\$ 279,391	\$ 31,802	\$ 272,259	\$ 610,075	\$ 2,048,657	\$ 636,164	\$ 1,606,035	\$ 1,635,950	\$ 2,053,458	\$ 1,730,813	\$ 3,455,821	\$ 4,364,950	\$ 4,362,738	\$ 4,651,027
Wattsmart Small Business	\$ 179,212	\$ 173,649	\$ 340,006	\$ 489,642	\$ 1,462,492	\$ 1,869,985	\$ 1,740,742	\$ 2,001,039	\$ 1,942,292	\$ 2,135,943	\$ 1,827,348	\$ 2,486,333	\$ 2,354,544	\$ 3,647,369
1. Very Small Business (<= 30k kWh)	\$ 22,380	\$ 46,945	\$ 96,475	\$ 94,978	\$ 213,674	\$ 348,566	\$ 283,445	\$ 517,262	\$ 345,331	\$ 537,049	\$ 263,234	\$ 482,746	\$ 490,760	\$ 770,178
2. Small Business (<= 145k kWh)	\$ 124,594	\$ 121,820	\$ 164,307	\$ 266,944	\$ 833,304	\$ 1,035,628	\$ 1,026,952	\$ 1,008,808	\$ 1,137,375	\$ 1,078,042	\$ 996,981	\$ 1,351,338	\$ 1,327,205	\$ 1,676,928
3. Small Business (<= 200k kWh)	\$ 32,238	\$ 4,884	\$ 46,380	\$ 126,280	\$ 263,995	\$ 196,254	\$ 66,320	\$ 175,652	\$ 88,411	\$ 209,094	\$ 349,370	\$ 269,866	\$ 165,405	\$ 430,905
4. Small Business (<= 300k kWh)	\$ -	\$ -	\$ 32,843	\$ 1,440	\$ 133,800	\$ 242,674	\$ 349,625	\$ 243,317	\$ 356,775	\$ 255,758	\$ 133,800	\$ 331,502	\$ 356,775	\$ 700,458
5. Small Business (> 300 kWh)	\$ -	\$ -	\$ -	\$ -	\$ 17,720	\$ 46,864	\$ 14,400	\$ 56,000	\$ 14,400	\$ 56,000	\$ 83,963	\$ 50,881	\$ 14,400	\$ 68,900

Clean Energy Implementation Plan

Kim Alejandro



Clean Energy Implementation Plan (CEIP) Update



**On March 27, 2026,
the Washington
Utilities and
Transportation
Commission
(WUTC) approved
PacifiCorp's 2025
CEIP!**

On October 1, 2025, PacifiCorp filed its second Clean Energy Implementation Plan with the Washington Utilities and Transportation Commission (WUTC). The plan includes activities the company will take during the next compliance period (years 2026 – 2029) to make progress towards defined targets.

Final [Order 01](#) in docket UE-250617 approved PacifiCorp's 2025 CEIP, subject to 18 conditions. PacifiCorp will provide a supplemental filing to its 2025 CEIP by the end of June of this year (90 days from the final written order).

2026 CETA Compliance Report

Will report the utility's progress during the prior interim performance period (years 2022-2025)

- Two filed documents
 - Washington State Department of Commerce Performance & Compliance Report (template)
 - Washington Utilities & Transportation Commission Clean Energy Compliance Report

Both due by **July 1, 2026**



Equity Advisory Group

Christina Kruger



May 1:1s in Community

Conversation Agenda



Introductions



Background



Community Challenges



EAG Feedback

MAY '26

SUN	MON	TUE	WED	THU	FRI	SAT
					01	02
03	04	05	06	07	08	09
10	11	12	13	14	15	16
17	18	19	20	21	22	23
24	25	26	27	28	29	30
31						

Conversation Framework Review

Meeting Agenda

Introductions

- Name, associated organization/group
- PacifiCorp introductions
- A little bit about yourself
- Reason for joining the EAG/reason for continued engagement

Background

- How did you get started at [Organization/Group Name]?
- Can you describe the key roles [Organization/Group Name] plays in the community?
- Has participation in the EAG helped support your mission, either personal or organizational?

Community Challenges

- What are some of the biggest challenges you/your community is facing?
- Are there any energy related challenges you have noticed in your community?
- If you could solve one energy problem in Yakima/Walla Walla, what would it be?
- Which of the programs that we have shared with the EAG so far do you think will be most beneficial to your community/organization and why?

EAG Feedback

- How would you characterize your experience with the EAG so far? What is going well and what are you looking forward to working on together?
- Is there anything you are hoping to get out of the EAG meetings that you have not gotten so far? What might that look like?
- How could we make meetings more effective? Engaging?
- Are there any other topics we have not covered that you would like to cover?



Recent Filings & Upcoming Drafts

Zac Hymes

PACIFIC POWER
A DIVISION OF PACIFICORP

82064

OPERATED BY
PACIFICORP
USDOT 026931

Recent/In-Process DSM-Related Filings

	Draft Sent	Comments Received	Response to Comments Sent	Filed	Commission Open Meeting, Order
2025 Clean Energy Implementation Plan (2026-2029) Docket UE-250617	Draft Filed 8/15/2025	9/5/2025		10/1/2025	3/24/2026 – Recessed Open Meeting
2026-2027 Biennial Conservation Plan Docket UE-250825	10/1/2025	10/15/2025	10/23/2025	10/31/2025 (Revised Plan filed 1/8/2026)	1/14/2026 Order 01 Order 01 – Attach. A
2026 System Benefits Charge - Schedule 191 Docket TBD	5/1/2026	5/15/2026	5/22/2026	6/1/2026	
2025 Annual Conservation Report Docket UE-230904	5/1/2026	5/15/2026	5/22/2026	6/1/2026	
2024-2025 Biennial Conservation Report Docket UE-230904	5/1/2026	5/15/2026	5/22/2026	6/1/2026	

Dates in italics are anticipated dates

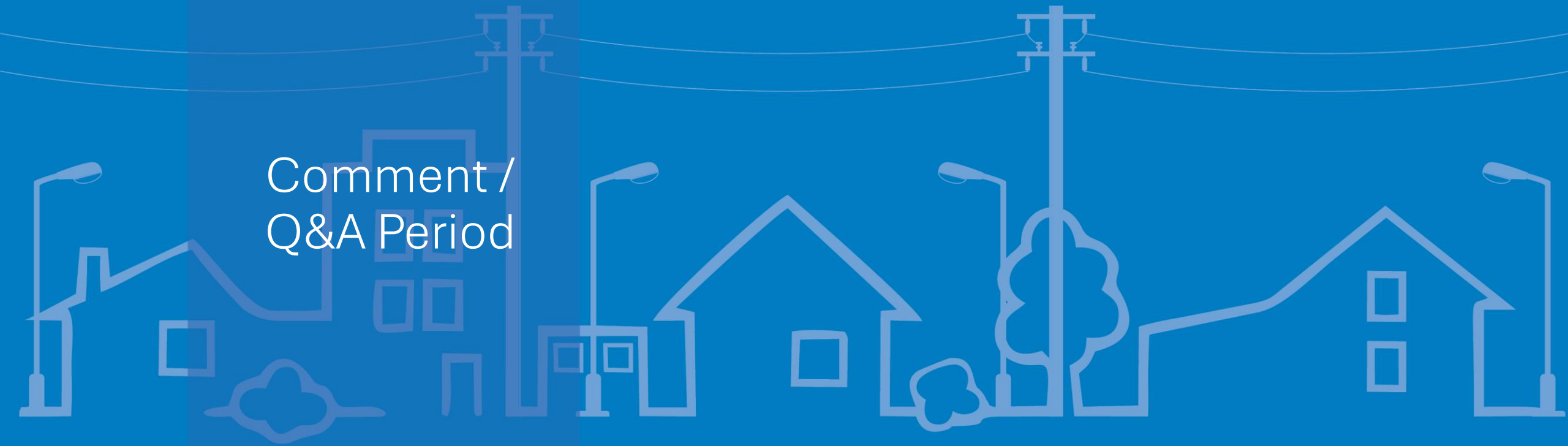
Upcoming Drafts & DSM-Related Filings

	Draft Sent	Comments Received	Response to Comments Sent	Filed	Commission Open Meeting, Order
2025 Annual Demand Response Report Docket UE-220550	<i>6/1/2026</i>	<i>6/15/2026</i>	<i>6/22/2026</i>	<i>7/1/2026</i>	
2026 Clean Energy Transformation Act (CETA) Compliance Report (Report on Company's progress during the performance period 2022-2025) Docket TBD				<i>7/1/2026</i>	
2027 Program Changes* (For Wattsmart Homes and Wattsmart Business – To Be Filed as Appendices to the 2027 Annual Conservation Plan)	<i>9/16/2026</i>	<i>9/30/2026</i>	<i>10/7/2026</i>	<i>11/13/2026</i> <i>(45 Day Public Notice Posted by 11/17/2026)</i>	
2027 Annual Conservation Plan Docket UE-250825	<i>10/13/2026</i>	<i>10/27/2026</i>	<i>11/3/2026</i>	<i>11/13/2026</i>	

Dates in italics are anticipated dates

*Draft Program Changes for Wattsmart Homes and Wattsmart Business are sent separately and prior to the Annual Conservation Plan to resolve feedback on them prior to filing as Appendices to the Annual Conservation Plan, and to allow for a 45 Day Public Notice to be posted before the changes become effective as of Jan. 1, 2026.

Comment /
Q&A Period



Wrap-up



2026 DSM-Related Key Regulatory Dates

March

- DSM Advisory Group Meeting #1 – **March 23**

April

- Schedule 191 - DRAFT Request for Exception to DSM AG *If No Changes* – **April 1**

May

- Schedule 191 - FILE Request for Exception *If No Changes* – **May 1**
- Schedule 191 – DRAFT Filing to DSM AG *If Changes Needed* – **May 1**
- Biennial Conservation Report (2024-2025) – DRAFT Filing to DSM AG – **May 1**
- Annual Conservation Report (2025) – DRAFT Filing to DSM AG – **May 1**
- ★ DSM Advisory Group Meeting #2 – **May 7**

June

- Schedule 191 – FILE Modified Tariff with UTC *If Changes Needed* – **June 1**
- Biennial Conservation Report (2024-2025) – FILE with UTC – **June 1**
- Annual Conservation Report (2025) – FILE with UTC – **June 1**
- Demand Response Annual Report – DRAFT Filing to DSM AG – **June 1**

July

- Demand Response Annual Report – FILE with UTC – **July 1**
- Clean Energy Implementation Plan Progress Report – FILE with UTC – **July 1**

ACR: Annual Conservation Report
BCR: Biennial Conservation Report
CPA: Conservation Potential Assessment
DSM AG: Demand-side Management Advisory Group
UTC: Washington Utilities and Transportation Commission
WSH: Wattsmart Homes Program (Residential)
WSB: Wattsmart Business Program (Commercial & Industrial)

DSM AG Meeting #1 Key Topics

- System Benefits Charge Review
- Proposed Mid-year WSH & WSB Program Changes

DSM AG Meeting #2 Key Topics

- Draft 2025 ACR
- Draft 2024-2025 BCR
- 2027 CPA Update
- Potential Filing - System Benefits Charge

2026 DSM-Related Key Regulatory Dates

August

- No Planned Meetings, Drafts, or Filings

September

- 2027 WSH & WSB Program Changes – DRAFT to DSM AG – **September 15**
- DSM Advisory Group Meeting #3 – **September 21**

October

- 2027 Annual Conservation Plan – DRAFT to DSM AG – **October 13**

November

2026 DSM Advisory Group Schedule

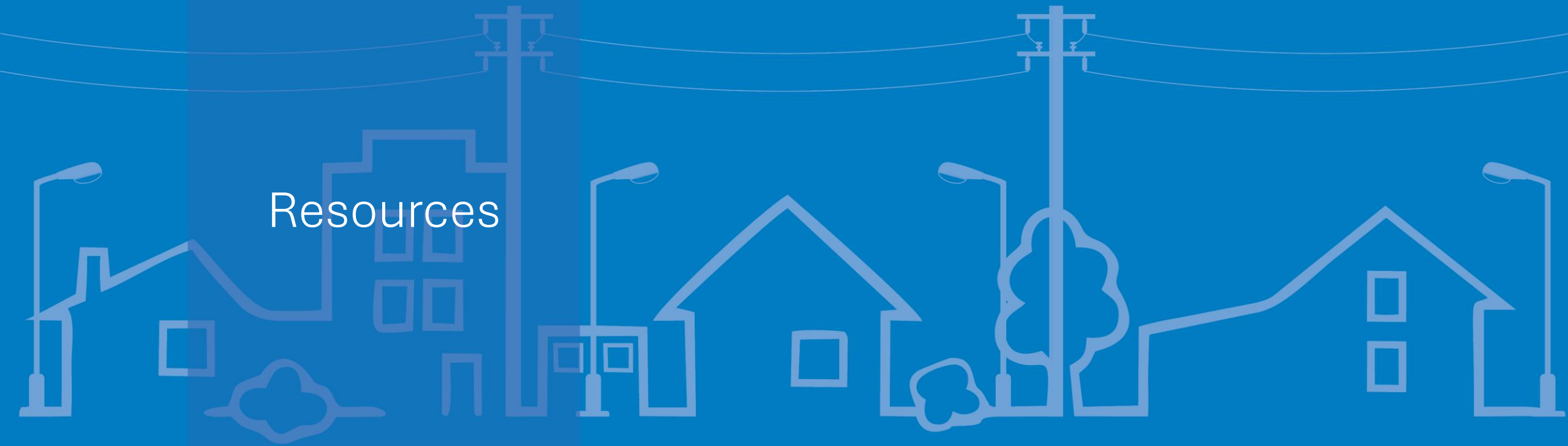


	Key Topics
#1 March 23, 2026 1-4pm	<ul style="list-style-type: none"> • System Benefits Charge Review • 2026-2027 DSM Forecast • Energy Efficiency Program Updates, Including Proposed Mid-year Program Changes • Clean Energy Transformation Act Updates <ul style="list-style-type: none"> • Equity Advisory Group • Demand Response Forecast
#2 May 7, 2026 1-4pm	<ul style="list-style-type: none"> • Draft 2025 Annual Conservation Report and 2024-2025 Biennial Conservation Report – Draft Review and Feedback Discussion • IF NEEDED – System Benefits Charge Draft Filing Review • 2027 Conservation Potential Assessment Update • 2026-2027 DSM Forecast and Adaptive Management • Clean Energy Transformation Act Updates <ul style="list-style-type: none"> • Clean Energy Compliance Report Preview • 2025 CBI Metrics Review • Equity Advisory Group • Demand Response
#3 September 21, 2026 1-4pm	<ul style="list-style-type: none"> • 2027 Annual Conservation Plan Preview • 2026-2027 DSM Forecast • 2027 Planned Program Changes • Energy Efficiency Programs – Adaptive Management, Utility Actions, Pilots • Integrated Resource Planning Update • Clean Energy Transformation Act Updates <ul style="list-style-type: none"> • Equity Advisory Group • Demand Response
#4 December 10, 2026 <i>Joint with EAG</i> 1-4 pm	<ul style="list-style-type: none"> • 2027 Communications and Outreach Plan • 2026-2027 DSM Forecast and Adaptive Management • Energy Efficiency Program and Pilot Updates • 2026 & 2027 DSM Advisory Group Engagement • Demand Response 2026 Performance Review

A scenic landscape featuring a wide river in the foreground. On the right bank, a fisherman in a red jacket and dark pants is standing in the water, casting a fishing line. The background shows a large concrete dam with a spillway structure. The riverbank is covered in dense evergreen and deciduous trees, with some trees showing autumn colors. The sky is clear blue with a few wispy clouds. A red graphic element is visible in the top right corner.

Thank You!

Resources



Resources For The DSM Advisory Group

Topic	Subject	Where to find
Meeting info	Slides from past DSM and Equity Advisory Group meetings; info on upcoming Equity Advisory Group and CEIP engagement meetings	CETA Webpage (in Public participation and Advisory Group Meetings Section): https://www.pacificpower.net/community/washington-clean-energy-transformation-act-equity.html
Energy Efficiency	Program pages for Washington (customer facing info)	Energy Efficiency Programs Hub: www.pacificpower.net/wattsmart Low Income Weatherization: https://www.pacificpower.net/my-account/payments/bill-payment-assistance/washington-liheap-weatherization.html Wattsmart Homes: https://wattsmartsavings.net/washington-residential/ Wattsmart Business: https://www.pacificpower.net/savings-energy-choices/business/wattsmart-efficiency-incentives-washington.html
Energy Efficiency	DSM Annual Reports, DSM Biennial Conservation Reports, program evaluations	Demand-Side Management Page: https://www.pacificcorp.com/environment/demand-side-management.html
Energy Efficiency	Energy Efficiency Request for Proposals	Energy Efficiency Request for Proposals (no active Request for Proposals in progress now): https://www.pacificcorp.com/suppliers/rfps/energy-efficiency-rfp.html
Demand Response	Program pages for Washington (customer facing info)	Wattsmart Business Demand Response: https://www.pacificpower.net/savings-energy-choices/business/CIDR.html Irrigation Load Control: https://www.pacificpower.net/savings-energy-choices/business/wattsmart-efficiency-incentives-washington/wa-agriculture.html Wattsmart Batteries: https://www.pacificpower.net/savings-energy-choices/wattsmart-battery-program.html

Resources For The DSM Advisory Group

Topic	Subject	Where to find
Energy Resource Center	Hub for stakeholders	Energy Resource Center: https://www.pacificpower.net/savings-energy-choices/energy-resource-center.html
Energy Efficiency	Conservation Potential Assessment	IRP Support & Studies Page: https://www.pacificorp.com/energy/integrated-resource-plan/support.html
Integrated Resource Plan	Integrated Resource Plan Upcoming and prior IRP presentations	Integrated Resource Plan Pages: <ul style="list-style-type: none"> • https://www.pacificorp.com/energy/integrated-resource-plan.html • https://www.pacificorp.com/energy/integrated-resource-plan/support.html Public Input Process: <ul style="list-style-type: none"> • https://www.pacificorp.com/energy/integrated-resource-plan/public-input-process.html